



## Maidenstone Hill

### Land uses

- Residential.

### Building quality

- Two storey early Victorian cottages, with some earlier houses at its east end. Undercliff flats four storey.

### Listed buildings

- Nos 1-35 (south side) are statutorily listed.

### Building materials

- Yellow stock with some render, timber joinery, slate roofs. Railings have been replaced by picket fencing.
- Undercliff flats are in dark brick flat roofed.

### Heritage assets

- Unified townscape. Modest scale of houses complements the grander houses in Hyde Vale and Gloucester Circus.

### Local distinctiveness

- No 35 (1800) is faced in timber to imitate rusticated stone.
- College Place East plaque.
- Historical association with Morden College.



Maidenstone Hill  
North side



Gable end



Walled garden



Walled garden



Walled garden



32-34



30-32



26-28



22-24



22



20



18-18a



14-16



10-12



6-8



4



2



35



37-39



39-43



43-47



47-51



49-53



53-57



59-61





63-65



65-67



67-71



73-75



73-75



77-79



## Dutton Street

### Land uses

- Residential.

### Building quality

- Two storey cottages are flush to the pavement and stepped to follow the hill.
- Some houses include basements.

### Listed buildings

- Nos 21-43 (odd) and Nos 18a-30 (even) are locally listed.
- No statutorily listed buildings.

### Building materials

- London stock brick, slate roofs, timber joinery. Some feature original cast iron railings.

### Heritage assets

- Unified townscape and well preserved exteriors. North end of Dutton Street is the back lane to Hooke Court.

### Local distinctiveness

- Historical association with Morden College.



Dutton Street  
West side



21-23



23-25



27-31



31-35



35-37



Trinity Gardens



39-41



43





45



47-49



51-53



57



59



61-63



Open space



2



3



4



5



6



7



8



9



9-10



11



12



13



14



95



95-97



99-101



101

Dutton Street  
East side



45-46



44-45



42-43



40-41



38-39



36-37



33-35



28-26





22-24



18-20



18



65-67



67-69



69-73



73-75



77-79



Flats



Flats



Flats



## Trinity Grove

### Land uses

- Residential.

### Building quality

- Two storey terraces are flush to the pavement, stepped on the hill.

### Listed buildings

- None.

### Building materials

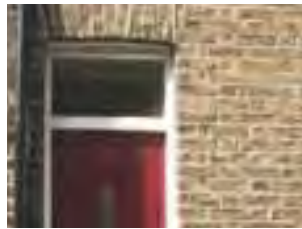
- Yellow stock brick, timber joinery, slate roofs.

### Heritage assets

- Unified group of mid-Victorian cottages, and create a quiet enclave off Maidenstone Hill.

### Local distinctiveness

- Personalisation by residents (plants in pots, benches, seating) enhances the intimacy of the street.



Trinity Grove  
East side



9-10



8-9



6-7



4-6



2-3



2 - gable end



Trinity Grove  
West side



18



15-17



15



14



14A



12-13



11



## Winforton Street

### Land uses

- Residential.

### Building quality

- North side comprises mid-late twentieth century six storey flats (Penfold House) and two storey houses of a similar date.
- South side includes late Victorian terrace, two storeys, followed by Hooke Court, twentieth century deck access flats.

### Listed buildings

- None.

### Building materials

- Victorian terrace London stock brick with painted stone dressings. Slate roofs, some replaced.
- Twentieth century development is mostly in yellow or pale grey brick.

### Heritage assets

- The Victorian terrace is of some local interest as part of the growth of the area.

### Local distinctiveness

- No distinguishing qualities.



Winforton Street  
North side



Penfold House



1-3



5



5-9



9-13



13-17



19-23



23



**Winforton Street**  
South side



Open space



Garages



46-48



38-40



34-38



30-34



28-30



24-26



18-22



14-16



14 - Hooke Court



Hooke Court



## Hollymount Close

### Land uses

- Residential.

### Building quality

- Hollymount Close is open plan, with a two storey cluster of short terraces (c. 1960). Influenced by the Span developments.

### Listed buildings

- None.

### Building materials

- Tile hung façades, flat roofs, projecting porches.

### Heritage assets

- None, but of landscape interest and forms part of the continuing development of terrace housing in West Greenwich.

### Local distinctiveness

- No local features.



Hollymount Close  
East to west



10-16



9-11



13-15



2-4





## Blackheath Hill

### Land uses

- Residential.

### Building quality

- Varied form. The earliest buildings are substantial mansions set back above the road at the end of long gardens.
- At the east end are the mid twentieth century Point Close flats. Trees are particularly dominant.
- Four storey undercliff flats are at right angles to Blackheath Hill.

### Listed buildings

- Nos 87-93 Blackheath Hill are listed.

### Building materials

- Richly varied. Point Close flats are in yellow stock but No 89 (early Georgian) is red brick.

### Heritage assets

- Listed buildings are all of high architectural and historic significance. Fine pedimented doorcase with fanlight to No 89.

### Local distinctiveness

- Historic buildings are important as part of the growth of Greenwich as an early London suburb. There is a timber shopfront at No 93.



Blackheath Hill  
North side



Side of flats



Walled open space



Walled open space



Walled open space



Walled open space



87



89



91



93



Point Close



Point Close



Point Close





## West Grove

### Land uses

- Residential.

### Building quality

- Large (with an average height of four storeys) town houses and mansions facing onto Blackheath. Smaller buildings have been inserted at Nos 3-5.

### Listed buildings

- The majority of buildings are statutorily or locally listed.

### Building materials

- Predominantly London stock brick but also some early red brick (No 17). Painted stone dressings including the portico to No 17.

### Heritage assets

- Strong group value and prominence at the western end of the Heath. The four storey Conduit House (1937) is of appropriate mass but is weak architecturally given its key position.

### Local distinctiveness

- Canted oriel window (front and rear) to Point House is an unusual detail.

West Grove  
North side



Point House



Point House



17



16



15-16



14



9



9



8



7



6-7



5-6



4-5



3-4



2



Conduit House





## Nevada Street

### Land uses

- Mix of uses including retail, entertainment and residential.

### Building quality

- South side dominated by flank of Greenwich Theatre with an 1885 façade surmounted by a 1969 extension. The three storey Rose and Crown public house is situated on the corner.
- On the north side is Spread Eagle Yard, a former inn with Georgian shopfronts on each side (original?).

### Listed and locally listed buildings

- Spread Eagle Yard (Nos 8-9) and Nos 10-13 (south side) are listed.
- Greenwich Theatre and others nearby are locally listed.

### Building materials

- Stucco and yellow brick, stone and red brick dressings. Dark (plum) brick to theatre extension.

### Heritage assets

- Lively urban townscape and rich detail. Apart from the theatre, the plots are narrow and support the fine-grained character of the street.

### Local distinctiveness

- The juxtaposition of individual buildings creates a distinctive group.



Nevada Street  
North side



9



8



7-8



6-7



Garages



3-4



1-2

Nevada Street  
South side



12



Greenwich Theatre



Greenwich Theatre



Greenwich Theatre



Greenwich Theatre



Rose and Crown public house





## Nelson Road

### Land uses

- Residential and retail.

### Building quality

- Unified, planned three storey (with an attic) Regency terrace, terminated at the southeast corner by a three storey (but larger scale and taller) mid-twentieth century rebuild. Parallels College Approach to the north.

### Listed buildings

- All listed except the end building, which is locally listed.

### Building materials

- Stucco and slate roofs, iron balconies, timber shopfronts and window joinery, slate roofs. Giant order Ionic columns and pilasters. End block is of artificial (Empire?) stone and metal windows. Lively mouldings to the upper part of the building.

### Heritage assets

- Central importance as an example of Regency town planning (Joseph Kay, for the Greenwich Hospital). High degree of preservation and the scale of the small shops has been retained.

### Local distinctiveness

- Road laid out as part of the through route with Romney Road and Trafalgar Road. Kay's architecture is a variant on contemporary development in central London by John Nash. There are mainly local traders in the shops.
- Passageway entrance to Greenwich Market is memorable and distinctive.



Nelson Road  
North side



Retail units



Retail units



Retail units



Greenwich Market entrance



Retail units



Retail units

**Nelson Road**  
South side



Retail units



Retail units



Retail units



Retail units



Retail units



Retail units



Retail units





## Greenwich Market

### Land uses

- Retail and market.

### Building quality

- Modern shopfronts (1958) within brick buildings, backing onto the Joseph Kay redevelopment.

### Listed buildings

- Locally listed.

### Building materials

- London stock brick.
- Stone dressings.
- Stone flags and granite setts.
- Steel roof with acrylic sheeting.

### Heritage assets

- The market is in its original location and contributes to the life of the town centre.
- The small scale of the shops is appropriate to its context.

### Local distinctiveness

- Local traders, with no (or few) multiples.



Greenwich Market  
Clockwise from north



Greenwich Market retail units



Greenwich Market north entrance



Greenwich Market retail units



Greenwich Market retail units



Greenwich Market retail units



Greenwich Market retail units



Greenwich Market retail units



Greenwich Market retail units



Greenwich Market retail units



Greenwich Market retail units



Greenwich Market retail units



Greenwich Market retail units



Greenwich Market retail units



Greenwich Market retail units



Greenwich Market retail units



Greenwich Market retail units



Greenwich Market retail units



Greenwich Market retail units



Greenwich Market retail units



Greenwich Market retail units

Turnpin Lane



Oblique view east



Oblique view west



Oblique view west



Oblique view west



Greenwich Market  
Entrances



Greenwich Market south entrance



Greenwich Market west entrance



Greenwich Market west entrance



Greenwich Market west entrance



Greenwich Market west entrance



Greenwich Market west entrance



Greenwich Market north entrance



Greenwich Market north entrance



## Crescent Arcade

### Land use

- Retail and transport.

### Building quality

- Single block.
- Average three storeys in height.
- Complete c.2001.

### Listed buildings

- None.

### Materials

- Concrete and render.

### Heritage assets

- None.

### Local distinctiveness

- None.



Crescent Arcade  
South side



Retail units



Retail units



Retail units



Retail units



Retail units





Crescent Arcade  
North side



Wetherspoons public house



Retail units



Retail units



Retail units



Retail units



Retail units



## College Approach

### Land uses

- Offices, retail, public house and residential.

### Building quality

- Three storey plus attics, with an increase in height at King William Walk and richer modelling to the façades. Tuscan columned entrance to market.

### Listed buildings

- All buildings are statutorily listed.

### Building materials

- Stucco, slate roofs, timber joinery.

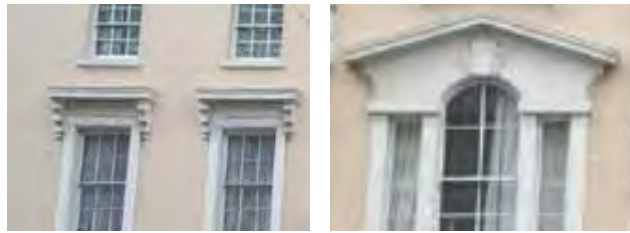
### Heritage assets

- Central importance as an example of Regency town planning (Joseph Kay, for the Greenwich Hospital). High degree of preservation. The subtle modulation of façades emphasises the vertical rhythm.

### Local distinctiveness

- Road laid out as a new western approach to Royal Naval College, on a cross-axis between the principal buildings. Kay's architecture is a variant on contemporary development in central London by John Nash. Mainly local traders in the shops. Passageway entrance to Greenwich Market is memorable and complements that on Nelson Road.

*On the site of 15th century house of Observant Friars (source: Cherry and Pevsner, 1981)*



College Approach  
North side



20-21



16-19



13-16



11-13



11





Retail units



Admiral Hardy public house



Greenwich market



6-8



2-4



The Spanish Galleon public house



## King William Walk (west side)

### Land uses

- Residential, retail, public houses, restaurants.

### Building quality

- Irregular heights, styles and scale, but the consistent plot width maintains the vertical rhythm of the sequence. Some twentieth century infill to Kay Terrace.

### Listed buildings

- Nos 11-14 are statutorily listed (early eighteenth century). Kay development fronting the Market is also listed.

### Building materials

- Very mixed and includes stucco, red brick, London stock brick.

### Heritage assets

- Important group value facing the Old Royal Naval College and in framing the view down to the Cutty Sark; also south towards Greenwich Park.

### Local distinctiveness

- Memorable townscape and a foil to the grand scale of the Old Royal Naval College and the National Maritime Museum.



King William Walk  
West side



Greenwich Park Bar and Grill



2-3



3-5



5-7



8-9



10



11



12-13





13-14



14



14 and shop



Walled garden



King's Arms public house



18



19-20



21



21-22



23-24



24-26



28-30



30-31



31-33



33-35



37



39-40



40-42



44-46





## Greenwich Church Street

### Land uses

- Mixed retail, commercial and community.

### Building quality

- Domestic scale, apart from the Church of St Alfege, with mostly three storey buildings. Building scale increases near the church and development is halted by the railway cutting.

### Listed buildings

- The Church of St Alfege, Nos 15-17 Greenwich Church Street and the Kay buildings opposite are statutorily listed. Neighbouring buildings are locally listed.

### Building materials

- The Church of St Alfege is in Portland stone. Kay (market front) terraces are stucco (stock brick to rear). Former Burton store (Café Sol) uses artificial (Empire?) stone.

### Heritage assets

- Cardinal historic significance as the oldest street in Greenwich, and remains its commercial focus. Narrow plots predate many of the occupying buildings, with the exception of the Cutty Sark station block. Despite war damage, the Church of St Alfege is of national importance and its tower is a prominent landmark.

### Local distinctiveness

- S-shaped form of the street is memorable and reveals a sequence of oblique views of the buildings along its length.



Greenwich Church Street East side



Gypsy Moth public house



54-56



52A



Walled garden



22



The Spanish Galleon public house



Retail units



Retail units





Retail units



Greenwich Market entrance



Retail units



Retail units



Retail units



Retail units



Retail units



Retail units



Retail units



Retail units



Retail units



Retail units



Car parking



Car parking



18



18 and car park

Greenwich Church Street West side



Car parking



John Humphries House



Retail units



Retail units

Greenwich Church Street West side



Retail units



Greenwich Church Street West side



Church of St Alfege



Church of St Alfege



Retail units



Retail units

Greenwich Church Street West side



Retail units



Retail units



Retail units



Retail units





Retail units



Retail units



Retail units



Retail units



Retail units



Retail units



Retail units





## Cutty Sark Gardens

### Land use

- Recreation, museum and transport uses with an underground car park.

### Building quality

- Cutty Sark clipper is permanently moored in the dry dock and is undergoing restoration - the structure dominates this part of the town.
- Domed tunnel entrance is single storey.

### Listed buildings

- Cutty Sark and foot tunnel are both listed.

### Building materials

- Cutty Sark - timber, rope and copper - clad hill.
- 'Dome' - brick, glass canopy entrance.

### Heritage assets

- Both are key landmarks in the conservation area.

### Local distinctiveness

- High/unique: sense of place defined by the river, the Cutty Sark and views towards Canary Wharf.

## Cutty Sark Gardens



Cutty Sark Gardens



Cutty Sark Gardens



Cutty Sark Gardens



Cutty Sark Gardens



## Welland Street and Riverside

### Land use

- Residential and community uses, with retail rear to Welland Street.

### Building quality

- Five storey buildings with post-war classical influence.
- Chimneys punctuate skyline.
- Deck access to the dome blocks.

### Listed buildings

- None.

### Building materials

- Red brick.
- Rear of Welland Street; render brick and render to the new flats at Wood Wharf.

### Heritage assets

- None.

### Local distinctiveness

- None.



Welland Street  
North side



Parking



SE10 Restaurant and bar



Delaney House



Page House



Coltman House



Coltman House



Coltman House



Welland Street  
South side



Coltman House



Coltman House



Coltman House



Welland Street  
South side



Retail units



Retail units



Flats and retail servicing



Flats and retail servicing

Riverside



Holt Court Estate



Holt Court Estate



Holt Court Estate



Wood Wharf, Horseferry Place (under construction)

Wood Wharf, Horseferry Place (under construction)



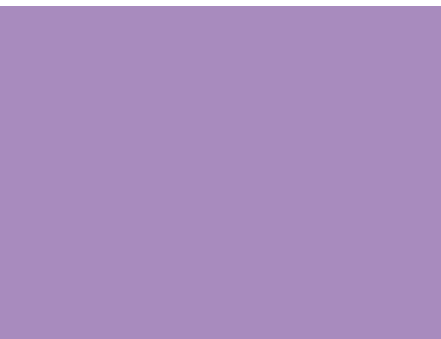
Wood Wharf, Horseferry Place (under construction)



Wood Wharf, Horseferry Place (under construction)



Wood Wharf, Horseferry Place (under construction)







## St Alfege Passage

### Land use

- Residential and community uses.

### Building quality

- Two storey terrace with later additions.

### Building materials

- London stick brick, with stone dressings, timber joinery, and cast iron railings.
- Stone paving.

### Heritage assets

- Appealing, mid-Georgian terrace, complementary to the west front of the Church of St Alfege.

### Local distinctiveness

- Survival of railings and other architectural details are noteworthy.



St Alfege Passage  
North side



Oblique view of St Alfege Passage



Oblique view of St Alfege Passage



5



2-4



2-4



2-4



