

East Greenwich Pleasaunce Management Plan

2019-24



CONTENTS

PART 1: WHERE ARE WE NOW?	3
Park Address and Contact Details	3
Introduction - What is a Park Management Plan?	4
Description of the Park	5
Heritage of the Park	6
Access to the Park	6
Ecology and Landscape	7
Park Infrastructure	9
Recreational in the Park	10
Park User Information	12
Management of the Park	13
PART 2: WHERE DO WE WANT TO GET TO?	18
Vision	18
Analysis & Assessment	19
Strengths	20
Challenges	20
Recommendations	20
PART 3: HOW WILL WE GET THERE?	21
Action Plan	21
PART 4: HOW WILL KNOW WHEN WE HAVE ARRIVED?	23
Monitoring and Review	23
APPENDICES	24
Appendix I References	24
Appendix II Legislation, Policies & Strategies	25
Appendix III East Greenwich Pleasaunce History	39
Appendix IV P&OS Management Structure Chart	41
Appendix V Annual Maintenance Schedule	42
Appendix VI Examples of Event Leaflets	43
Appendix VII Previous action plan	44

Please note that all maps and diagrams contained within this plan are derived from the Royal Borough of Greenwich GIS and are subject to copyright. See [Appendix I](#) for References.

PART I: WHERE WE ARE NOW

Park Address and Contact Details

Name of Site: East Greenwich Pleasaunce

Address: Chevening Road
Greenwich
London
SE10 0LB

Address: Parks, Estates & Open Spaces
Oxleas Woods Centre
Crown Woods Lane
London
SE18 3JA

Tel. 020 8856 0100

Email parks@royalgreenwich.gov.uk

The Parks Strategy & Development Team can be contacted for any further information (using the contact details provided above).

The park benefits from a dedicated Friends of East Greenwich Pleasaunce. The group was set up in March 2006 and at the time of writing has over 200 members. Their contact details are:-

Email: friends.egp@gmail.com
Website: <http://fegp.org>



Introduction – What is a park management plan?

Management Plans are an important aid to the efficient and effective management of a site. A Plan forms part of a process for evaluating performance, consulting and involving people, strategic planning and providing continuity. Individual plans are specific to each park and will deliver aims and objectives specific to the needs of the local community who will be directly involved in its formulation.

A Park Management Plan also provides an excellent opportunity to collate a wealth of information relating to the park that the management authority possesses, into a single comprehensive document.

Purpose of this management plan.

As well as developing a Green Space Strategy, the production of individual management plans for a park is good practice and is in accordance with The Royal Borough's commitment to providing Best Value.

This Management Plan will provide a vital resource for parks staff in maintaining and developing East Greenwich Pleasaunce as a resource for the community and visitors to the area and as such will be under constant informal review. The Management Plan will be reviewed of progress and updated annually, with a five-year comprehensive review in 2024.

It is hoped that this plan will help to encourage relationships between The Royal Borough and the community and provide access to information on the management approach to this site, as well as providing a framework around which any future decisions concerning this site will be taken.

In addition, it is hoped that the management plan for East Greenwich Pleasaunce will assist with allocating existing and securing additional resources for developments on this site that this management plan specifies.

Future actions/priorities for this site are identified in the Action Plan to this document. This management plan therefore provides a benchmark against which future progress can be measured.

Wider Policy Context

The Management Plan has been written within the context of a wide framework of national, regional and local policy statements and strategies.

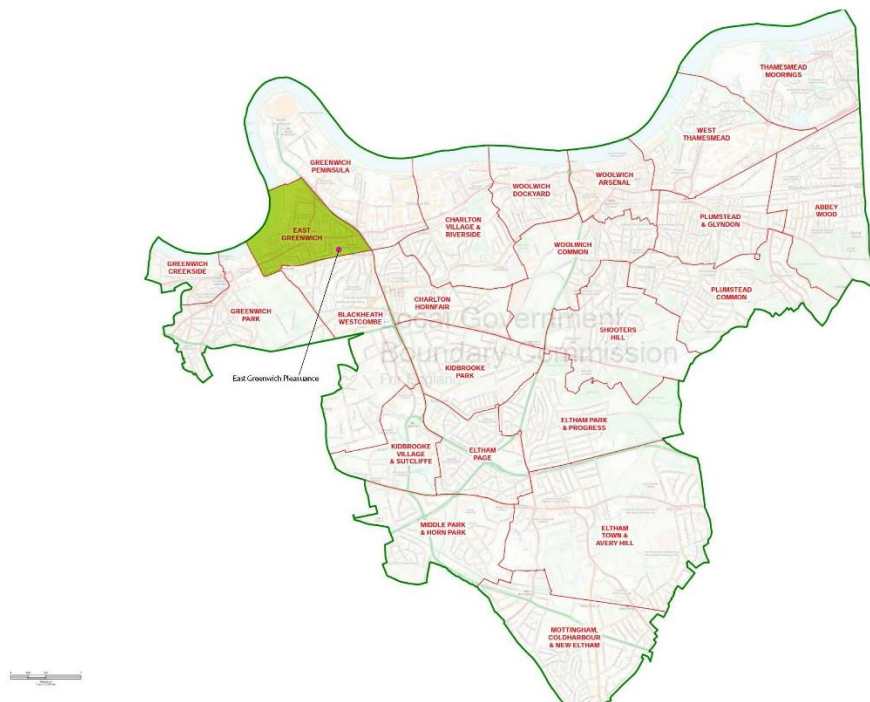
A number of strategies have been considered in the production of this document to ensure that the priorities identified in this plan deliver and compliment the appropriate aims and objectives identified in them.

The main documents impacting on the development of this plan are listed in [Appendix II](#).

Description of the park

The park is owned by The Royal Borough of Greenwich. East Greenwich Pleasaunce is a small park in the East Greenwich Ward of Greenwich, found in the northwest area of The Royal Borough of Greenwich and located at grid reference TQ399 78.

Location of the park within The Royal Borough of Greenwich



Source of base plan: Internet

It occupies a total area of 2.4 hectares that is surrounded by Halstow Rd residences on its eastern side, Chevening Rd residences on its northern side, Annandale Rd residences on its western side and the Greenwich East Coast Railway Line on its southern side.

The park is an area of gently north sloping land at around 15 metres above sea level, enclosed by a 2 meter high brick wall on all sides. The geology underlying the park is defined by the Borough GIS as Upper Chalk in the northern half of the park and Thanet Sand in the southern half of the park.

The Pleasaunce is categorised under the Greenwich Green Space Strategy as a primary purpose classification of Local Park

The Park is open daily by 8:30am and closed by dusk (times vary throughout the year).

Heritage of the Park

Some gravestones within the Pleasaunce remain legible and combined with the connection with the Greenwich Hospital; this may provide a source of interest for the public, particularly as several of the officers buried in the Pleasaunce were of great importance. In 2008 the memorials were inspected all memorials now comply with accepted safety standards as prescribed by National Association of Memorial Masons (NAMM).



East Greenwich Pleasaunce War Memorial Plaque

Historically, there was a rail installed around the naval officer's burial area. This was removed during World War Two for recycling for the war effort.

A summary of East Greenwich Pleasaunce's heritage and history can be found in [Appendix III](#).

Access to the Park

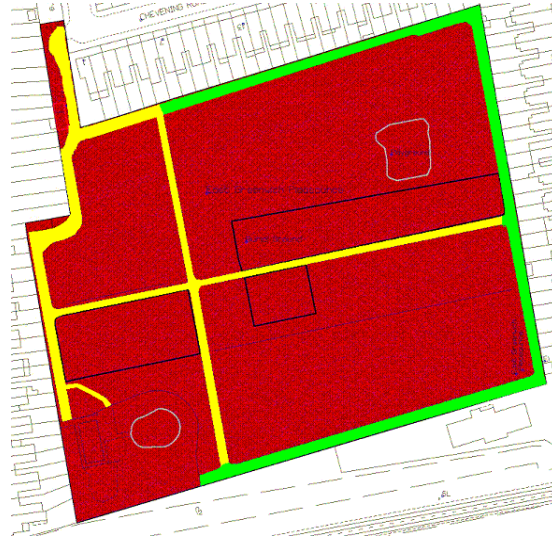


As shown in the plan above, the closest British Rail stations to East Greenwich Pleasaunce are Westcombe Park Station & Maze Hill Station, which are a short walk away.

Buses 129, 177, 180, 286, 422 all pass close to the park on Woolwich Road (A206) and Parking facilities are available on the surrounding residential roads.

Ecology and Landscape

On the plan below, yellow indicates Bitumen pathways, green indicates gravel pathways. The area on the bottom left containing no pathways is an area leased to The Bridge Trust (A Community Interest Company CIC).



Plan showing pathways within the Pleasaunce.

East Greenwich Pleasaunce is sited on a slope which is around 1 in 14, so most of the park is accessible according to current legislation. The pathway down the eastern side of the Pleasaunce is only gravelled and this pathway is on a slightly steeper slope, so areas of the park reached using this pathway are not quite as accessible as other areas. On the whole, the paved pathways within the Pleasaunce are in good condition and have few trip hazards. The gravel pathway from the Halstow Road entrance to the Park Café was refurbished in 2014 and a gravel terrace was installed in front of the café.

East Greenwich Pleasaunce is completely surrounded by a high brick wall with a long row of pleached limes along three sides of the walls. (Pleached limes is a horticultural term for the way limes are grown close together and trained with their branches intertwining) stretching the full length of the eastern, northern and western sides. The limes provide good screening of the wall and shield the park to and from the residential properties surrounding the park.

In addition to the limes, there are several other trees within the park of interest, the most notable being a rare weeping beech, which is within the officers' burial area.

The Pleasaunce contains tree species such as – mock orange (*Philadelphus lewisii*), hawthorn (*Crateagus spp*), silver birch (*Betula pendula*), ash (*Fraxinus sp*), variegated holly (*Illex aquifolium 'Variegata'*), lexu holly (*Illex wilsonii*), walnut (*Juglans sp*), English oak (*Quercus robur*), poplar (*Populus sp*), cherry (*Prunus sp*), Austrian pine (*Pinus nigra*), Swedish whitebeam (*Sorbus intermedia*), lexu maple (*Acer rubrum 'Drummondii'*), weeping beech (*Betula pendula var. gracilis*), lilac (*Syringa lexulate*), holm oak (*Quercus lex*).

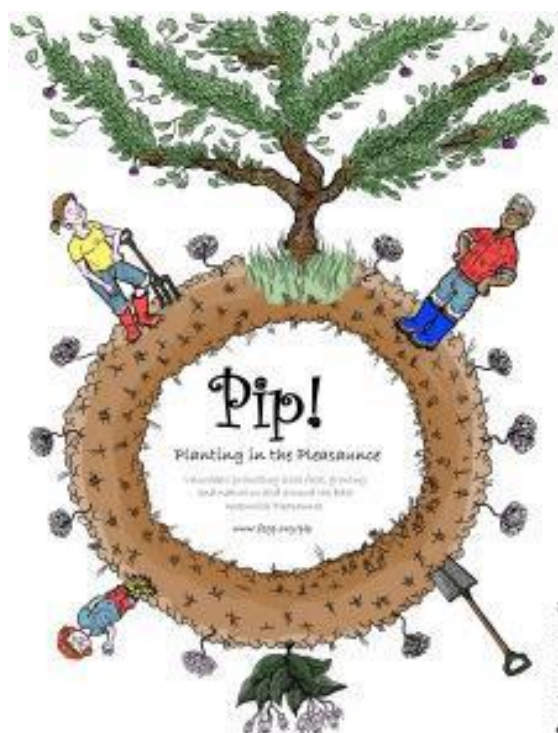
An arboricultural assessment of East Greenwich Pleasaunce was carried out in 2018 and a copy is held in the Arboricultural Office in the Oxleas Woods Centre.

In 2020, Parks reached its target of planting 2022 trees by 2022 ahead of schedule and the 2022nd tree was planted in East Greenwich Pleasaunce. The Dawn Redwood (*Metasequoia glyptrobodies*) was planted by Children from Halstow Primary School, The Leader – Cllr Thorpe, Cllr Scott Macdonald and Cllr Khaireh. (see photo below).



A White Mulberry (*Morus Alba Pendula*) and a Wych Elm (*Ulmus glabra Camperdownii*) were also planted during 2020 to celebrate tree week.

A small orchard of fruit trees was planted in the park in 2011 by the Friends Group working in conjunction with City Orchards (charitable organisation). Additional fruit trees were planted in the park in 2013.



The Pleasaunce has a community-run orchard of pears, plums and apples, created and maintained by local people, run by the Friends of East Greenwich Pleasaunce and the London Orchard Project. The group is called Pip! (Planting in the Pleasaunce) and the Orchard has been named the East Greenwich Pleasaunce Memorial Orchard.



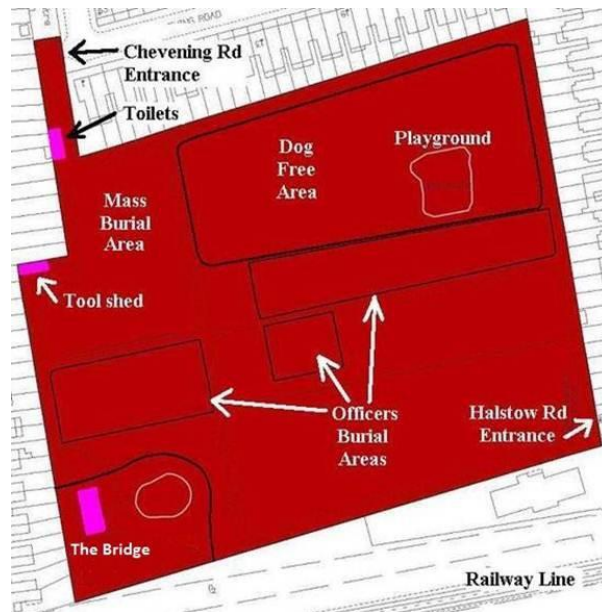
To increase bio- diversity on site, mulching with recycled materials has been increased, and sowing of wild flower seed including *Anthemis arvensis*, *Agrostemma githago*, *Centaurea cyanus*, *Chrysanthemum segetum* and *Papaver rhoeas* along the northern border of the park has taken place. In addition, naturalized grass areas around the headstones are maintained. Ecological practices such as standing dead wood, log piles, small conservation grass areas have been implemented.

Park Infrastructure

There are currently four buildings within East Greenwich Pleasaunce;

- The building in the southwest corner of the park is of brick construction and leased to The Bridge Trust – A Community Interest Company. It is open Monday to Friday for morning and afternoon playgroup sessions. The building can also be hired out for use in the community.
- A brick built shed on the western side of the park backing onto the Pleasaunce’s perimeter wall was used previously for tool and machine storage. (the building can be seen in the 1860 maps). The building was refurbished in 2013 and the Friends used the building for their storage.
- The building near the Chevening Road entrance is a toilet block of brick construction. In 2008 the toilets were re- wired to provide light and power and the plumbing serviced. And in 2009 the building had a new roof. Subsequently the building is now used by the friends of EGP to support community events.
- A new café building including public toilets was built in the park in 2009. “Pistachios in the Park” is open seven days a week serving food, drinks, ice cream etc. The cafe is housed in an award-winning eco-friendly building, which was named Green Building Winner in the

New Shopper's Green Guardian awards 2008. Designed by Alexander Sedgley architects, it features thermally-efficient building blocks, a grass roof, solar panels to power underfloor heating, and metal trellising as cladding for climbing plants to grow up.



Plan of East Greenwich Pleasaunce

The responsibility for maintaining buildings within Parks and Open Spaces lies with Corporate Property Services within the Directorate of Regeneration Enterprise and Skills. The café has a repairing lease for the building and responsibility for the cleaning of the public toilets.

There are a number of park benches and picnic tables conveniently located around the park, including a memorial seat just outside the dog free area. A number of litter / dog bins are situated throughout the park and they are emptied / cleaned regularly helping to maintain the park in a good condition.

There is one interpretation sign in the park, close to the Chevening Rd entrance, which details the history of the park and carries the emergency phone numbers. In addition to this The Friends of East Greenwich Pleasaunce have a notice board at each entrance of the park which they use to promote park events and post general park information. There is also directional signage situated in Halstow Road indicating location of the park.

Lighting was installed throughout the park along the perimeter pathway from Halstow Road to Chevening Road in 2013. The main gates / railings by the Chevening Road entrance were repainted in 2012.

Recreational within the Park

Due to the size of the park and the limited space available the range of uses available to visitors is limited to passive recreation and minimal active recreation activities. Activities available within the park include; dog walking, history and nature studies, sightseeing (great view of canary wharf from

near “The Bridge”), informal ball games and picnics, use of the children’s playground, table tennis, use of the Café and The Bridge Centre.

The Bridge Community Centre

The Bridge is a Community Centre run by volunteers through a not-for-profit Community Interest Company. Situated in the corner of East Greenwich Pleasaunce in the former under 5s building, is a place that the whole community can use for activities every day of the week. Currently it has an extended licence from the Royal Borough and can offer volunteer run groups from 8am till 6pm as well as holding parties at the weekend. Play & Stay sessions with a variety of activities aimed at the under-5s are held at the Bridge, in morning and afternoon sessions and a gardening club is also available to join.

Inside the Bridge building there is an inside play area with a ball pit, playhouse, slide and climbing frame, lots of toys, books and dressing up clothes. Outside there is a safe and enclosed playground for site users. An additional gate and pathway from the Bridge was installed in 2011 to give users of the facility a more direct route to park & café.

Pistachios in The Park Café

The café is a thriving business and a real asset to the park. It has proved to be very popular and has increased footfall in the park considerably. It has become a meeting place for many local residents to sit and relax and enjoy food and drinks. The Café actively supports public events and hosts its own regular events throughout the year

Park Events

An annual commemoration service is held in East Greenwich Pleasaunce on Trafalgar Day attended by The Mayor, ward councillors, and local residents and groups. The event is organised by the Friends of Group supported by The Royal Borough of Greenwich.



Trafalgar Day 2018

Other events facilitated by the Friend’s of East Greenwich Pleasaunce include:-

- Christmas Carols in the Pleasaunce
- Easter Egg Hunts
- Blind Auction

- Trafalgar Day Remembrance
- Children's Treasure Hunts as well as children's picnic parties
- Boules competitions
- Arty picnic in the Pleasaunce
- Annual Parksfest

Playgrounds

The largest open area which is uninterrupted by trees, gravestones and changes of ground level, is within the fenced off dog free area in the north eastern section of the park. There is a public playground inside this area which is separated by a low metal fence and is designed to be used by children between the ages of 3 and 13. The play equipment conforms to European Union standards EN1176 and EN1177 in regard to installation and surfacing. The equipment is visually inspected three times a week by Parks, Estates & Open Spaces staff, with a more detailed inspection undertaken on a bi-monthly basis and an independent inspection on an annual basis.

Table Tennis

Table Tennis tables were installed in the park in 2010 and donated by The English Table Tennis Association.

Park User Information

The park appears to attract a range of people including mothers & toddlers using the "The Bridge", local residents using the café and walking their dogs, school children from the local school's etc.

The Demographic information contained in this section is gathered from a variety of sources, including the 2011 Census Information on the London.gov.uk website under Ward profiles.

The information relates to Peninsula Ward as a whole and not specifically to the area surrounding East Greenwich Pleasaunce (and use of the Pleasaunce is not restricted to residents of the Peninsula Ward). The size of the Peninsula Ward is 448 hectares and the resident population in 2011 was 16,500. The population density of the ward is 3,667 persons per square kilometre with 34% of the peninsula Ward is Green Space.

Information from the 2011 Census indicates that 16% are 15 years old and under, 75% were 16 to 64 years and 9% were 65 years old and over.

The 2011 Census indicated that the ethnicity of people living in this Ward were white (69.4%), Asian/Asian british (14.2%), Black/Black british (9.3%), Mixed (5.4%), other (1.7%).

East Greenwich Pleasaunce is overlooked on three sides by residential properties and the park has a safe friendly feel to it. The security in the park has been improved by the installation of lighting throughout the park in 2013. The park does not have any anti social behaviour problems, only the occasional graffiti.

Stakeholders

The Royal Borough of Greenwich

-Directorate of Communities, Environment and Central (PE&OS)

- Directorate of Regeneration Enterprise and Skills (Property Services, Planning Control)
- Chief Executives (Communications/Community Engagement)
- Neighbourhood Services (Neighbourhood Panels/Representatives)

Community

- Friends of East Greenwich Pleasaunce
- Local school children, especially Halstow Primary School
- The Bridge Trust Community Interest Company

Agencies

- Police, Fire & Rescue Service
- Greenwich History Museum

Business

- The Park Café

Politicians

- local MP
- Ward Members

Management Structure

The management of the park described in this management plan is the responsibility of the Parks, Estates & Open Spaces service within The Royal Borough of Greenwich. For organisational structure chart see Appendix IV

The Parks, Estates and Open Spaces Service is located within the Directorate of Communities, Environment and Central. The Parks, Estates and Open Spaces Senior Management Team are accountable for the overall management responsibility of the Service. Individual management functions are devolved and key functions are identified as follows:

- Horticultural Maintenance
- Park Rangers
- Parks Development
- Fixed Equipment Playgrounds
- Ecology & Conservation
- Tree & Woodland maintenance
- Administration – Sports lettings, complaints monitoring

The Royal Borough of Greenwich provides continued support to the Café lease holder and “The Bridge Community Interest Company” who have buildings within the park.

Staff Presence on Site

A mobile grounds maintenance team (based at the local Blackheath Depot) undertakes regular maintenance and horticultural works on East Greenwich Pleasaunce. Scheduled / planned maintenance takes place at different times throughout the year. See Appendix V for details. Un-programmed and corrective maintenance takes place on an ad hoc basis according to need. The District Manager oversees all work.

Mobile Park Rangers perform a range of duties on site to ensure the safety of the public visiting the park, provide assistance where appropriate, visual inspections of playgrounds, opening and closing of gates & facilities, emptying of bins and maintaining the park free of litter.

The Parks Strategy & Development team for the park are responsible for planning and implementing improvements to the park. They are also responsible for identifying and pursuing external revenue to make improvements to the park.

Safety and Security of the Park

The Pleasaunce contains a number of community notice boards / interpretation signs that show emergency telephone numbers if park rangers should not be in attendance in the event of an accident or emergency.

Any anti-social behaviour is reported via ASB reports and any recurrent problems are dealt with via increased patrols by the local police and PCSO's.

Community Involvement at the Park

The Pleasaunce benefits from having an active Friend's of Group, which have been very successful in encouraging community involvement and usage of the park. They also organise events and further promote the park within the wider community.

The group currently has regular meetings and has an active management committee and are member of the Friends Forum. There have been a number of very successful public events in the park in recent years, which were organised and run by the friends with support from The Royal Borough.

There is a good working relationship between The Royal Borough's Parks Department and the Friends Group. The Friends of EGP use part of the former toilet block for storage and open the public toilets for park events.



Easter Egg Hunt

The Friends Group take part in a range of ecology projects including: bird feeders, bat boxes, and a wildflower garden for educational resources to be provided for local schools. They have also created a tree trail.

The Friends of East Greenwich Pleasaunce have their own website which can be found at <https://fegp.org/>

Environmental Management of the Park

The Royal Borough of Greenwich's Parks, Estates and Open Spaces section has an Environmental Management System (EMS) which is externally audited and certified against the internationally respected EN ISO 14001 Environmental Standard.

In line with The Royal Borough of Greenwich's aim of protecting the environment, the directorate has adopted an environmental policy which aims to ensure that service is delivered in an environmentally friendly manner. In line with the Environmental policy, the directorate has also adopted the peat use policy, pesticide use policy, and contains initiatives to minimise fuel and energy usage. The following sections are brief descriptions of each policy.

Peat Policy

One of the aims of the policy is to reduce or cut out the use of peat as it is not sustainable. The policy regarding the use of peat can be found in [Appendix II](#)

Pesticide Usage Policy

In line with the section's environmental policy, Parks, Estates and Open Spaces aim to minimise pesticide usage. The policy regarding the use of pesticides can be found in [Appendix II](#)

Energy usage

Parks, Estates and Open Spaces aims to minimise energy usage in delivering the Service. Maintenance equipment is serviced regularly to ensure that fuel consumption of mechanical equipment is maximised. Locally based gardener and park Rangers teams reduce the need for extensive travelling and again this reduces fuel consumption. Low energy bulbs are used in lighting and external lighting is photo-sensitive and so are only on during hours of darkness. The café in East Greenwich Pleasaunce was built to an environmentally sound specification.

Recycling

The Parks and Open Spaces department recycles all of its green waste. Unfortunately due to space constraints, it is not possible to recycle green waste within the bounds of the Pleasaunce. Green waste is taken to the Department's depot at Shooters Hill where it is shredded and used as mulch on shrub areas etc. Where possible mixed waste is separated and sent to The Royal Borough's Material Recycling Facility (MRF) where it is separated and then sent for recycling. Other mixed waste which can't be recycled is sent to a local incinerator which produces heat and energy for the adjacent housing estate. Some large wood is reused to create wood piles to encourage increased bio-diversity and potential habitats for stag beetles and other invertebrates. Some very large wood has been used to make rustic benches for use on open spaces where applicable.

Environmental Awareness

All staff have completed an Environmental Induction and have access to a copy of the Environmental Management System at each depot, which also contains other relevant health &

safety information such as risk assessments and COSHH assessments.

Budget Information

The budgets used to maintain parks and open spaces are currently split into two areas, Horticulture Operations and Property Services.

Horticultural / Park Rangers Operations

Revenue Spend 2021/22 = £38,535

Capital Spend 2021/22 = £9,343.71

Property Services

The corporate budgets for both planned and responsive maintenance of the Borough's property infrastructure are held by Greenwich Property Services in the Directorate of Regeneration Enterprise and Skills. Planned works are carried out on a strict basis of corporate priorities. Responsive repairs are carried out for minor items as and when they arise.

Investment – Playground to Stadium

The Royal Borough is committed using the opportunities created by the 2012 Olympics to create a legacy of improved infrastructure and outdoor sports facilities in the Borough's Parks & Open Spaces. To meet this ambition it approved a £4.77 million investment programme.

Funding from this programme was allocated for East Greenwich Pleasaunce and has provided the installation of new lighting into the park in 2013. The new lighting runs from the main entrance at Chevening Road to the other entrance at Halstow Road via The Bridge and the café.

Playground to Stadium funding was also allocated to refurbish a former storage building for the Friends of Group to use as a store for portable sports/active recreation equipment in 2013.

Marketing

Information about local parks within the borough including East Greenwich Pleasaunce can be found on the Royal Borough of Greenwich website www.royalgreenwich.gov.uk

The Friends of East Greenwich Pleasaunce also have their own website <http://fegp.org> devoted to the Pleasaunce, which is used to promote park information and park events.

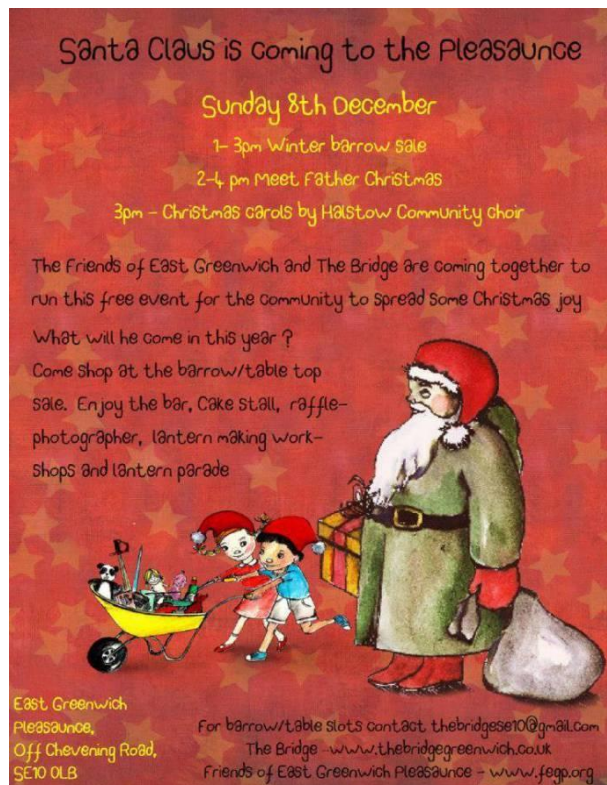
(links to the Friends of website can be found on The Royal Borough of Greenwich Website & Friends Forum Website)

The Friends of EGP issue a regular newsletter that is displayed on the community notice boards within the park and downloadable from their website. They host regular events in the Pleasaunce and facilitate other organisations to do so.

The Royal Borough has also developed and published an information leaflets for the site which is available in local libraries. The Pleasaunce is also promoted via articles in The Royal Borough's free newspaper "Royal Greenwich Times", which is delivered on a weekly basis to all the households in The Royal Borough of Greenwich.

The Park Café facility was marketed prior to opening on a wider basis as well as locally to attract as much interest and custom as possible to secure its success.

The Pleasaunce contains interpretational signage which details the history and heritage contained within the site.



Please see Appendix VI for additional examples of leaflets advertising events in East Greenwich Pleasaunce.

Green Flag Award

East Greenwich Pleasaunce has successfully retained the Green Flag Award for a number of years. The Green Flag Award® scheme is the benchmark national standard for parks and green spaces in the UK. It was first launched in 1996 to recognise and rewards the best green spaces in the country. Many years later it continues to provide the benchmark against which parks, and green spaces are measured. It is also seen as a way of encouraging others to achieve high environmental standards, setting a benchmark of excellence in recreational green areas.

Green Flag Award® applications are judged against eight key criteria.

1. A welcoming place
2. Healthy, safe and secure
3. Clean and well maintained
4. Sustainability
5. Conservation and heritage
6. Community involvement
7. Marketing
8. Management

Additional information can be found on their web site <http://www.greenflagaward.org.uk/>

PART II: WHERE DO WE WANT TO GET TO

VISION

The vision for East Greenwich Pleasaunce is (developed in conjunction with Friends of EGP) General Objectives

- To continue to support park café lease holder
- To continue to achieve Green Flag Status for EGP
- To preserve the tranquillity and character of the Pleasaunce
- To maximise the potential of the green space by positive actions for example, establishing an allotment for Halstow primary school, provision of bird feeders.
- To reduce anti-social behaviour in the Pleasaunce
- To improve the health and well-being of visitors and residents by offering a well maintained and quality park for recreation and/or relaxation
- To make the Pleasaunce safe and secure, especially after closing time.
- To realize the potential of the park as a cultural and historical place to visit through a programme of publicity, information and events, and to build on the good work by the Friends of East Greenwich Pleasaunce
- To work with the local community in identifying local priorities for funding of the park
- To ensure that the activities and events in the park celebrate and promote the borough's rich diversity and that it is accessible to everyone

ANALYSIS & ASSESSMENT

Heritage

East Greenwich Pleasaunce has an extensive and significant history, (detailed in Appendix III). The visible signs of history that are present have deteriorated due to ageing and in some instances, vandalism. A safety audit of the memorials was conducted in 2008 and corrective action was taken as required. Signs have been installed next to the memorials in 2013 in an effort to preserve the historic artefacts within the park.

Ecology

Although the Pleasaunce provides valuable green space, ecology within the Pleasaunce is currently limited to that which can live in amenity areas with a wide mix of tree species and regularly mown grass.

The landscape within the Pleasaunce provides an important break within an area that would otherwise be considered deficient in open space. (See CS, part 2.4, map 5).

Sport & Recreation

Although the Pleasaunce provides plenty of scope for passive recreation, there is limited scope for sport or active recreation development within the site, as any developments may not only disturb or destroy the heritage significance of the site (depending on scale), it may also change the amenity value of the site.

However an outdoor table tennis table was installed in 2010 to provide some active recreation and funding was obtained to refurbish the storage building for the Friends Group to use as a store for some portable sports / active recreation equipment.

Management

Management of East Greenwich Pleasaunce currently appears to satisfy the wider users of the site. However, further consultation is recommended to continue to ascertain users' needs and aspirations.

STRENGTHS

- Historically significant
- Strong active Friends group
- Good local park enjoyed by the local community
- Community run centre based in the park
- Play area for children and families
- Horticulturally diverse
- Aesthetically pleasing
- Café
- Rare and valuable green space within an urban area

CHALLENGES

- Risk of historical artefacts and information being lost (e.g. names on gravestones etc)
- ASB within the site –and in particular graffiti, usually on the man-made surfaces; Non-compliance with dog free zone
- Local community would like longer opening hours
- Deterioration of infrastructure and buildings

RECOMMENDATIONS

- Continued consultation with Friends of East Greenwich Pleasaunce and other key stakeholders – seek comments and incorporate into plan as appropriate
- Continued consultation with wider community
- Preserve existing historical artefacts in the Pleasaunce
- To support Friend' of EGP in undertaking historical research/promote historical significance of the site
- Undertake a review of the ecology of the park
- Continued to secure Inward Investment as appropriate
- To reduce ASB in the Pleasaunce (in particular, after the closing time and non-compliance of dog-free zone)
- To improve awareness/use of site by all sections of the community
- Improve publicity (on The Royal Borough's website/publications)
- Where at all possible, support the work of the Friends of EGP
- To investigate feasibility of extending opening hours at the Pleasaunce
- To continue to retain the Green Flag Award.

Part III: HOW WILL WE GET THERE

ACTION PLAN (The 2013/18 action plan is in appendix VII)

Key

	Action to be taken during the years indicated (resources permitting)
	Actions ongoing during the years identified

Item	Actions	2019	2020	2021	2022	2023	2024	Action By:
Fences, benches and litter bins	Repaint / replace (non-playground) items with similar design and colour							PE&OS
Grave Furniture	Ensure that fallen headstones / monuments are either removed from site, or are repositioned to ensure safety							PE&OS
Management Plan	Review / amend Management Plan where appropriate. Seeking input from Friends of Group / other stakeholders							PE&OS
Ecology of the park	Carry out an assessment of the current ecology of site							PE&OS
	Increase mulching within the site using recycled materials							PE&OS
	Carry out a arboricultural survey in the park							PE&OS

	Work in conjunction with City Orchards (Charitable Organisation) and FOG to organise work days to maintain the orchards								PE&OS
To secure Inward Investment as appropriate	Work with Friends of Group to identify investment priorities and secure external funding where possible								PE&OS
To achieve a recognised standard	Continue to retain the Green Flag Award (Ongoing after initial application)								PE&OS
Create additional dog free area	To create a fenced off area near the café that is a designated dog free zone as per the friends wishes.								PE&OS
Install drink fountain	To work with the friends group in their wish for a water drinking fountain to be installed in the pleasaunce.								PE&OS
Survey buildings	To undertake conditional and asbestos surveys of the buildings within the pleasaunce								DRES
Update signage	To review and update signage in the pleasaunce								PE&OS

Important Note: Improvement actions requiring investment are subject to funding being secured. There are no additional funds available from the Council unless it has been identified against a specific action.

PART IV: HOW WILL WE KNOW WHEN WE'VE ARRIVED

MONITORING AND REVIEW

The East Greenwich Pleasaunce Management Plan will be fully reviewed and updated in 2024 by Parks Management Staff responsible for East Greenwich Pleasaunce.

A working document copy of the Management Plan will be kept within the parks office so that issues and changes that arise can be documented. The action plan will be reviewed as appropriate and updated accordingly.

APPENDIX I: References

Ordnance Survey Map 1869 – Map 6

1873 “London District” Sheet 4 Geological Survey

1924 Ordnance Survey Map with Geological

Thomas Milne’s Land Use Map of London and Environs in 1800, London Topographical Society,
1975-6, Pub No. 118 & 119

EGP Leaflet produced by P&OS

Greenwich Unitary Development Plan Second Development Draft

The Royal Borough of Greenwich GIS

Friends of East Greenwich Pleasaunce Website - <https://fegp.org/>

APPENDIX II: Legislation, policies and strategies affecting park management

As highlighted earlier in the plan, The Royal Borough of Greenwich's Parks, Estates & Open Spaces department operates within a wide framework of national, regional and local policy statements and strategies. The main documents impacting on the development of this plan are listed below.

The Greenwich Strategy

The Greenwich Strategy sets out the vision for The Royal Borough of Greenwich as being the place to live, work, learn and visit. This vision underpins all of the strategies produced by The Royal Borough of Greenwich and directly impacts on all service plans and service delivery.

The Cultural Strategy

Parks, Estates & Open Spaces is one of six 'areas' considered by the Cultural Strategy. The Strategy has five over-arching themes: - Equality and Access, Sustainability, the Cultural Economy, Achievement and Excellence and Partnerships. All of these aims are relevant to this management plan and have been considered in developing the opportunities and priorities for this site.

Green Space Strategy

The Green Spaces Strategy sets out the Council's strategic intentions for its green assets and its vision of the positive contribution that Greenwich's open networks make to our lives.

The thematic objectives (community safety, biodiversity, education and culture, culture & events, tackling inequality, sport, health & well being) are all relevant to the management plan for East Greenwich Pleasaunce.

<u>Theme</u>	<u>Action</u>	<u>Timescale</u>
Community Safety	Ensure all notice boards carry emergency / incident telephone numbers	Ongoing
	Identify sites most challenged by anti-social behaviour	Ongoing
	Reduce reports of serious anti-social behaviour in parks and open spaces by 25%	Ongoing
	We will encourage good citizenship and reduce youth disorder by developing a programme of outreach and educational initiatives.	Short-term
	Enforce litter and dog fouling powers by increasing the number of officers trained to issue fines and we will publicise both successful convictions and penalty notices issued	Long-term
	We will engage in dialogue with the Police and Community Safety Unit to reduce crime, fear of crime and ASB within parks	Ongoing
Biodiversity	In conjunction with partners, we will monitor and evaluate our biological assets, and work with others towards the development of a Greenwich Biodiversity Action Plan	completed

	We will develop management plans for our green and open spaces that implement the provisions of the Biodiversity final Greenwich Biodiversity Action Plan, and in particular species action plans for the, Stag Beetle, Water Vole, Black Poplar, Bats, and the Skylark.	Ongoing
	We will work in partnership with local groups and the wider community to identify areas in need of protection and intervention to protect and conserve our natural and semi natural green and open spaces	Ongoing
	We will promote the value of our natural and semi-natural spaces to encourage understanding, enjoyment and responsible usage of the spaces	Ongoing
Education and Culture	We will review and evaluate the potentials for environmental education services to schools and colleges and by guided nature walks and green space based activities	Short-term
	We will develop potentials for developing good citizenship amongst children and young people through environmental education activities	Medium-term
	We will facilitate training and employment opportunities for young people in green space management and maintenance	Long-term
Culture and Events	We will seek to realise the potential of many of our parks and green spaces as cultural and historical places to visit in their own right through a programme of publicity, information and events	Long-term
	In partnership with both external voluntary and commercial users and operators, we will implement a programme of cultural events and activities in our parks and green spaces that may include (but not be confined to) drama, dance, music, youth culture and children's activities	Long-term
Tackling Inequality	We will promote activities and events in our parks and green spaces to celebrate the borough's rich diversity of people and interests.	Ongoing
	We will work to develop safe and inclusive access to all our green spaces to all cultures and communities.	Ongoing
	We will utilise the potential of allotments and community gardens to provide opportunities for horticultural and environmental knowledge and skills sharing between both cultures and generations	Medium-term
Sport	We will work to achieve the targets to be agreed for the Council's Sports Strategy (in preparation) for outdoor sports activities	Long-term
	We will develop management plans for green and open spaces that provide for casual sport and recreation opportunities identified by local communities	Medium-term

	We will review levels of equipped and unequipped play space provision, standards and opportunities for improvement in the development of an Outdoor Leisure Provision Strategy.	Medium-term
	We will provide quality safe play facilities that conform to National and European Standards and which meet local needs	Ongoing
Health and Well being	We will aim to improve the health of children and young people by offering quality opportunities for active recreation in our green spaces.	Ongoing
	We will promote the allotment service and improve uptake of under-used allotments and continue to research and seek opportunities to provide additional allotments in areas where demand exceeds supply	Ongoing
	We will use allotments and their community gardening potential as a multi-agency tool to achieve objectives in relation to both healthy living and social inclusion	Ongoing
Inward Investment	We will consult inclusively with local communities to identify local priorities for project funding	Long-term
	We will develop an investment strategy that identifies and prioritises sites and projects for development	Medium-term
	We will identify external sources of funding and sponsorship and submit a progression of external funding bids	Medium-term
Performance & Standards	As a result of the Green Space Strategy we will develop detailed management plans for individual parks in partnership with local communities and users. The management plans will set priorities, as well as identify areas of potential.	Medium-term
	In addition to securing further Green Flag and Green Pendant Awards, local quality measures will be developed as part of management plans involving residents	Medium-term
	Develop additional "Friends of Parks" groups, ensuring full involvement of young people	Medium-term
	For smaller green spaces, adopt a direct community management approach with Council support	Medium-term

Parks and Open Spaces Strategy

The 10 year Strategy, adopted in 2017 is centred on the following seven themes:

- **Park and open spaces management:** Ensuring our parks and open spaces are well managed, maintained in good condition and are safe to use;
- **Community engagement:** Ensuring we actively engage and work in partnership with local residents to provide good quality parks that meet the needs of the local community;
- **Nature and biodiversity:** Ensuring that areas and habitats are provided for wildlife and that they are protected from inappropriate development;

- **Environmental management:** Maximise resource efficiency by increasing recycling opportunities, establish better use of essential energy sources and controlling the use of pesticides and chemicals;
- **Recreation, health and wellbeing:** Ensuring that parks provide spaces for active recreation and quiet reflection and contribute to the health and well-being of the local community;
- **Regeneration and local economy:** Ensuring our parks are well designed, attractive to visitors and encourage enterprise and employment of local people; and
- **Culture and heritage:** Ensuring our parks are places for culture and that their heritage is preserved and celebrated.

Annual Service Plan.

The Parks, Estates & Open Spaces department aims to develop, manage, ensure accessibility and maintain to a high standard The Royal Borough's Parks, Open Spaces, Woodlands, Tree Stock, Cemeteries, Playgrounds, Sports Pitches, Allotments and other outdoor facilities. To meet the needs of the community and deliver The Royal Borough's core objectives where applicable to the service, and specifically regarding the provision of a clean and well cared for environment and supporting Health and Quality of Life for the local community.

ISO 9001:2015– Quality Management System

The Parks, Estates & Open Spaces arboricultural services is accredited to the ISO 9001:2015. The ISO 9001 Quality Management System is used by the Royal Borough to manage their activities and resources to guarantee a quality service. The ISO 9001 helps the Royal Borough achieve customer satisfaction because it provides a framework for service analysis and definition and for the improvement of processes. The four main parts covered under the Quality Management System are (i) management responsibility (ii) resource management (iii) process management and (iv) measurement, analysis and improvement.

ISO 14001:2015 – Environmental Management System

The Parks, Estates & Open Spaces horticultural and arboricultural services are managed in conjunction with an Environmental Management System that is accredited to the internationally respected EN ISO 14001:2015 Environmental Standard. The Royal Borough's grounds maintenance and tree maintenance activities are controlled to ensure the service is delivered in an environmentally sustainable manner and to reduce any negative effects on the environment that may be their operations. Parks, Estates & Open Spaces works towards sustainable development and continual environmental improvements.

ISO 45001:2018 – Health, Safety & Wellbeing Management System

The Parks, Estates & Open Spaces arboricultural services is accredited to the ISO 45001:2018 which provides a framework for managing Occupation Health & Safety risks and opportunities. The aim is to prevent work related injury and ill health to workers and to provide safe, healthier workplaces by eliminating hazards minimizing risks by taking effective preventative and protective measures. The intended outcomes of the Health, Safety and Wellbeing Management System include (i) continual improvement of performance, (ii) fulfilment of legal and other requirements and (iii) achievement of Health & safety objectives.

Core Strategy

Local Councils have a duty to prepare a Core Strategy by law. The Greenwich Core Strategy (CS) sets out the vision for use of the land in the Royal Borough, and provides the main guidance for making decisions on individual planning proposals. The document is intended to cover the period 2013 – 2028. It is a legal document with the following purposes:-

- To provide a framework of acceptable uses within the Royal Borough, defining areas where development is not desired or where it needs to be carefully directed and;
- To provide a detailed basis for the control and development

The CS may be viewed at the Directorate of Regeneration, Enterprise and Skills, Planning Department, The Woolwich Centre, 35 Wellington Street Woolwich, SE18 6HQ, via The Royal Borough of Greenwich's website, or alternatively at a local library or online.

The Core Strategy designates East Greenwich Pleasaunce under the following policies

- Community Open Space OS1, OS(b)

For more details on each designation, please consult the full version of the CS via any of the venues described above using the references next to each designation.

The Biodiversity Action Plan

The Greenwich Biodiversity Action Plan is the first co-ordinated approach to conserving Greenwich's biodiversity. The aim of the plan is:

'To ensure the conservation, enhancement and public appreciation of the biodiversity of the London Borough of Greenwich'.

The Biodiversity Action Plan focuses on locally important habitats and species and has actions drafted to ensure that they cover all relevant habitats and species. Initially actions may be focused on those under the most pressure or where most advantage can be gained. However, it allows for all important habitats and species to be covered.

The Biodiversity Action Plan has been developed in partnership with local and regional groups and organisations.

Health and Safety

Staff are able to access certain Health and Safety information via a 'Red Folder'. 'Red Folders' are located at every depot where staff are based. The contents of the Red Folders include a list of first aiders, list of PA1 PA6A certificate holders, COSHH assessments, Risk Assessments, and the Environmental Management System Manual.

The contents of this red folder are reviewed on a regular basis, and any additional assessments are added as required. COSHH / risk assessments are carried out by trained staff on all new substances / new work practices before use.

All machinery operated by The Royal Borough of Greenwich undergoes regular maintenance by The Royal Borough's Fleet Management Service. In addition to this, staff carry out routine checks on all machinery before use. If problems are detected, the machinery is then booked for service by the Fleet Management Unit.

Parks, Estates and Open Spaces are continuously reviewing the market for energy efficient machinery. Where practical, battery operated hedge cutters are now used and the tree maintenance unit is looking to trial battery operated chain-saws, pole saws and blowers. The vehicles used by the Parks, Estates and Open Spaces department are also maintained by The Royal Borough's Fleet Management Service. The Borough is accredited to the Fleet Operator Recognition Scheme (FORS). FORS is a voluntary accreditation scheme for fleet operators which aim to raise the level of quality within fleet operations, and to demonstrate which operators are achieving exemplary levels of best practice in safety, efficiency, and environmental protection.

Legislation

The Parks, Estates & Open Spaces department operates within the frameworks set out by the following legislation, and therefore, the legislation may impact upon the delivery of service of the Parks and Open Spaces department both financially, through planning and human resources. This is not a comprehensive list but is indicative of key pieces of legislation relating to PE&OS.

Alcohol Consumption in Public Places Order 2003

Clean Neighbourhoods Act 2005

Food & Environment Protection Act

The Countryside Code (updated 2012)

The Waste (England & Wales) Regulations 2011

Countryside & Right of Way Act 2000

Disability Discrimination Act 1998

Health & Safety at Work Act 1974

Litter Act 1983

Ministry of Housing and Local Government Provisional Order Confirmation (Greater London Parks & Open Spaces Act)1967

Occupiers Liability Act 1957

Road Traffic Act 1988 (as amended 1991)

The Anti Social Behaviour Act 2003

The National Parks & Access to the Countryside Act 1949

The Natural Environment and Rural Communities Act 2006

The Weeds Act 1959

The Wildlife & Countryside Act 1981

In addition there are numerous bye-laws that relate to specific parks.

Policy Statements

EAST GREENWICH PLEASAUNCE APPROPRIATE USE POLICY

Purpose

To explain and clarify the Parks Service position on appropriate behaviour within the Pleasaunce and to promote the importance of the Pleasaunce as a better visited, more vital site which delivers great heritage, social environmental and recreational benefits for future generations.

Key Issues / Policy

Passive Recreation

Activities such as walking, relaxing, reading, photography, drawings, are all encouraged and considered appropriate ways to enjoy the environment of the Pleasaunce. Any activity that disturb the tranquillity of the site or are not in keeping with the presentation of the site will be prohibited. This will include such things as nude sunbathing, the consumption of alcohol taking drugs, playing loud music or large ball games etc.

Events

The Parks Service is committed to increasing the use of the site and people's understanding of various aspects of the site through various events and outreach activities. Events and activities should have relevance to the site and be in keeping with the aims of the authority. They should not in any way damage or alter the nature of the site long term.

Events and activities will always be carefully planned and sufficiently staffed. A health and safety assessment will be carried out before every event and all activities will be preceded by an introduction outlining health and safety issues and the importance of appropriate behaviour.

Dogs

Dogs are permitted in the Pleasaunce but owners are encouraged to keep them on a leash. Dogs are not permitted within the fenced no dog area which includes the playgrounds, in order to provide a safe area for children to play.

Access

An annual rota of opening and closing times has been drawn up by the Parks Service. This rota is advertised and available to members of the public upon request. If in the future, community groups become increasingly involved in the management of the site, they may need keys to gain access outside normal hours. In these circumstances, community groups will normally be required to give 24 hours notice of their intention to be on site outside normal hours. A list of key holders is held by Parks Services.

Vehicle access to the Pleasaunce is by prior arrangement with the Parks Services.

Authorised vehicles must use established paths only.

Vandalism

Acts of vandalism are to be treated as serious and the police should be called in situations where they have been witnessed or have been found after the incident.

Anti-Social Behaviour

People acting in an anti-social manner will be asked to stop that behaviour and/or asked to leave the site.

Criminal Activity

Breaches of Park Bylaws will be enforced by the Parks Service. Any other criminal activities witnessed will be referred to the Metropolitan Police for further action.

Removal of Vegetation

Removal of any vegetation except by authorised maintenance works carried out by authorised personnel is prohibited.

The Role of the Parks Service in Promoting Appropriate Behaviour within the site

On site, Parks' staff are the front line contact with people that visit and use the Pleasaunce. They are responsible for building up good relationships with visitors to the site and are in a position to give information, advise and help where needed. There are a number of bylaws which cover the Pleasaunce in addition to a number of policies which are required to be enforced. During enforcement of bylaws and policies, staff must protect their own safety and make a judgement as to how far they should go in asking people to refrain from certain activities or adhere to policies. All visitors will be asked to adhere to bylaws and policies. Police support will be requested when appropriate.

Conclusions

East Greenwich Pleasaunce is a complex site that is cherished by a number of local groups. The heritage of the site must be promoted further to the wider community so that its potential value is fully realised.

Several of the assets of the sites are vulnerable and policies have been developed in addition to existing bylaws with the aim of protecting the site as well as its visitors. This involves allowing the greatest number of visitors to the site without causing damage to the site or offence to other users. The safety, security and protection of the site and visitors will influence all existing and future policies.

EAST GREENWICH PLEASAUNCE GUIDELINES FOR EVENTS

Purpose

To explain and clarify the Parks Services position on running events within East Greenwich Pleasaunce and to establish best practice principles.

Context

The Parks service is committed to increasing the use of the site through supporting a range of events and outreach activities.

Key Issues/Policy

Expanding the Range of site Users/Visitors

Young People

It is important for the sustainable future of the Pleasaunce that young people become interested in the site, care for it and appreciate it. Events targeted at children and teenagers are an appropriate method of encouraging this involvement.

Local Community Groups

The Friends group are the main partner in delivering events in the Pleasaunce. They will be encouraged to use the Pleasaunce for suitable events throughout the year. The new café operator will also be encouraged to support and deliver appropriate events.

Ethnic Minorities

There is a lack of evidence regarding ethnic minority attendance at previous events held in the Pleasaunce but it is generally accepted that ethnic minorities are under-represented as visitors. A programme of outreach to ethnic minority groups should be developed to encourage minority groups to visit the Pleasaunce and to take advantage of the opportunities offered by the rangers Service (guided walks, presentations etc).

Event Organisation

Public events will be advertised in the Greenwich Time (the Council's Newspaper) which is distributed to all households in the borough and on posters, leaflets and flyers. Posters will show the Council logo. These will be displayed at least one week before the events.

Events will be advertised on public information boards in parks and may also be advertised in Libraries and other Council buildings. All posters will be removed at the most, 48 hours after an event. An events plan will be written for each event to facilitate the re-running of events in the future. Information about the event costs, in terms of time and other resources will also be kept. Events costs must be authorised in advance by Parks Management.

Running the Events

Events will be organised on an annual basis. Some additional events may be run responding to requests from specific user groups, schools or organisations. These events may not be advertised and may not be open to the general public. Some additional events may be run that are advertised and open to the general public. All events will be carefully planned and sufficiently staffed.

Children's events will have at least two members of staff to accompany the group. Adult events may have one member of staff present only, depending on the size of the group and the nature of the event. A first aid kit and mobile phone will be available to staff for all events.

Site Preparation

A site Health & Safety assessment must be carried out on the day of the event. If a hazard is evident, which can not be safely removed prior to the event, the event may be altered or cancelled.

Cancelling Events

Events may be cancelled because of illness, poor weather or hazards on site etc. Notices to this effect must be displayed on site and where possible at all poster locations, as far ahead of the event as possible. A contact phone number will be given for further information.

Suitability of Events

Only events deemed suitable by Parks, Estates and Open Spaces Management will be allowed on site. These will include events that have reference to the site and or are in keeping with the aims of the Council. Events which may cause offence or damage the site in any way will not be allowed.

Events Introduction

A briefing will take place with events organisers outlining health and safety issues and appropriate behaviour. The introduction will also cover staff introductions, durations of the event and an event outline.

Events Monitoring

Council events and some community events will be monitored using an events monitoring form. Events and activities will conclude with an opportunity for feedback. A comments and suggestions form will be available at the end of events and there will be the opportunity for verbal feedback. Data from these monitoring methods will be compiled and analysed every six months as well as on annual review basis.

Charging

Most events organised by the Parks Service will be free. Events organised jointly with or solely by partners may make charges. The Royal Borough will require all events to make concessions for people on low incomes and identified groups.

Conclusions

The Parks Service is committed to increasing the use and peoples' enjoyment of the Pleasaunce through running organised events and activities throughout the year. Events will cover a range of user and community groups. The aim of events and activities is to increase visitor numbers and increase peoples' understanding and appreciation of East Greenwich Pleasaunce.

Use of Peat / Peat Based Product Policy

Parks and Open Spaces
Communities & Environment
The Royal Borough of Greenwich

(Authorised by the Parks, Estates & Open Spaces Management)

Background:

Peat is a Heterogeneous mixture of decomposed plant material (humus) that has accumulated in a water-saturated environment and in the absence of oxygen.

Peat lands play an important role in the biosphere. They affect hydrological dynamics and water quality and provide important habitats for plant and animal species.

The extraction of peat for mans use has a major negative environmental impact in the long term.

In recent decades peat has been dug in vast quantities for use by the plant nursery industry and horticulture.

Peat has particular calculable water conductive properties. Plant production in the UK is somewhat organised to use peat as an alternative to mineral soils because of its consistent qualities and PH level.

It is a non- sustainable product

Our Policy:

- In Parks and Open Spaces we do not use peat as a soil ameliorant or mulch.
- We do not use peat or peat based product in relation to tree or shrub planting
- We encourage our suppliers to use products other than peat in the growing of trees, shrubs and bedding plants
- We train our staff in the rationale of not using peat based products

Parks, Estates & Open Spaces

Oxleas Woods Centre
Crown Woods Lane
London
London SE18 3JA

Pesticide Policy

**Parks, Estates & Open Spaces
Communities & Environment
The Royal Borough of Greenwich**

(Authorised by the Parks, Estates & Open Spaces Management)

As part of a continual move towards better environmental practice, we aim to minimise the use of pesticide where possible and to promote the use of alternative maintenance and curative procedures in relation to Parks, Estates & Open Spaces sites.

We aim to:-

- Eliminate the hazards of pesticides
- Reduce the dependence of pesticides
- Promote alternatives to pesticides
- Communicate good practice through membership to PAN (Pesticide Action Network).

Objectives:-

- Control the problem of worm casting, without the use of lumbricides
- To limit the use of selective herbicide to the ornamental areas only
- To not use on insecticides
- To limit the use of fungicides to the Bowling Greens
- To use organic fertilisers.



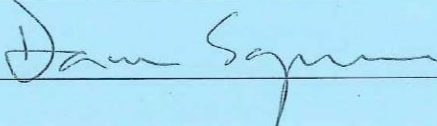
4.2 Environmental Policy

The Royal Borough of Greenwich recognises that environmental issues are of fundamental importance to our customers, and to our business success.

The Royal Borough of Greenwich aims to work towards the achievement of sustainable development and continual improvement.

Under the scope of its Environmental Management Systems, The Royal Borough of Greenwich strives to:

- Promote sustainability and the use of sustainable resources
- Promote conservation and environmental awareness
- Promote activities which enhance the environment
- Achieve continual improvements in environmental performance
- Prevent the release of pollution
- Minimise the release of waste, noise and emissions
- Minimise activities which have a negative effect on the environment
- Maximise activities which have a positive effect on the environment
- Comply with applicable legal and other requirements that relate to environmental aspects
- Work in partnership with other organisations in environmental management
- Set environmental targets built into the day to day running of the service
- Use products which have a minimum impact on the environment
- Provide training in environmental issues to all persons
- Communicate the Environmental Policy to all persons working for or on behalf of The Royal Borough of Greenwich
- Review Environmental objectives, targets and policy

Signed		Head of Parks & Open Spaces
--------	---	-----------------------------

Issue 09	Issue Date: 10/04/13	Ref: LC.EMS.P&OS
Page 6 of 40		

Parks, Estates & Open Spaces COSHH Statement

Parks, Estates & Open Spaces are committed to ensuring safe working practices and to minimising the negative effects on the environment from our activities.

Control of Substances Hazardous to Health within Parks, Estates & Open Spaces is through implementation of risk assessments on all substances where exposure could lead to an adverse effect on health or danger to safety, and the introduction of appropriate control measures.

COSHH assessments are undertaken by a trained member of staff and are reviewed annually

Written records are kept to demonstrate that risks have been considered

Control measures highlighted in the assessment are implemented and maintained

Parks, Estates & Open Spaces employees only use products in conjunction with a COSHH assessment

Health surveillance is used to evaluate effectiveness of control measures

An up to date inventory is kept of all hazardous substances to which staff are likely to be exposed to during their work activities

No other products may be brought into use without prior Management Review product approval

Parks and Open Spaces Environmental Policy also sets guidelines for the use of substances hazardous to health

APPENDIX III: East Greenwich Pleasaunce History

Brief summary

The site of East Greenwich Pleasaunce was originally farming land, the first mention of which can be found in the Domesday Book of 1086, where it is mentioned as part of the Manor of Dartford was under the jurisdiction of Arnold de Mandeville, who received 9s 2d per year rent for the "Lands of Combe West".

The Manor eventually became the property of Henry II, then in 1260, Sir William De Fortibus, Earl of Albmarle and Lord of the Manor, rented Westcombe for £6 per year. Eventually the Estate passed to Sir Gregory Page Turner.

Then, in 1857, the Greenwich Hospital purchased the land from the estate of Sir Gregory Page Turner to use as a cemetery at '£550 per acre exclusive of the interest of Mr William Miles, the Yearly Tenant of the Land' (who used it primarily as an orchard of fruit trees).

The Pleasaunce was bought by the hospital, as the two previous burial and internment areas used by the hospital had become full, and poor burial practices meant that there was public health risk if those practices were continued.

The Greenwich Hospital was originally founded in 1694 on the site of the royal palace at Greenwich by a Royal Charter of King William and Queen Mary, and was originally known as the Royal Naval Hospital. Its founding aims were: -

"the relief and support of Seamen...belonging to the Navy Royall...who by reason of Age, Wounds or other disabilities shall be incapable for further service...And for the Sustentation of Widows and the Maintenance and Education of the Children of Seamen happening to be slain or disabled. Also for the further relief and Encouragement of Seamen and Improvement of Navigation".

From 1705 the hospital buildings, completed by 1751, were occupied by Greenwich Naval Pensioners. Numbers of pensioners reached 2,710 by 1814 so even at this stage the Hospital had a large staff, headed by an Admiral, with its own bakery, brewery, infirmary wards and mausoleum. All the pensioners were provided with uniforms and tobacco money and those that could, undertook duties for which they were paid.

The conditions that the pensioners lived in were spartan however, and despite improvements in the mid 1800s, the number of in-pensioners declined, as more of them chose to live out and receive pensions. The Hospital closed as a seamen's home in 1869 but soon found a new role as home to the Royal Naval College.

Although the hospital closed as a seamen's home in 1869, burials within the Pleasaunce continued to be restricted to naval pensioners from the hospital, hospital staff and Navy officers. This being the case, many of the burials within the Pleasaunce were veterans of the battle of Trafalgar and the Crimean war. More recent burials include naval personnel from the first and second world war. Within the Pleasaunce, side by side, ex-seaman rest in peace with Rear admirals, Petty Officers with civilian instructors, and naval surgeons with schoolmasters.

The central area of the park was fenced off with an iron rail, and this area was used to inter officers.

In 1875, 3000 bodies were moved from the previous burial ground to the Pleasaunce during the construction of a new dining hall for the Royal Hospital School and the construction of a railway tunnel for the Greenwich – East Coast line. These bodies are commemorated by a marble plaque, set into the wall directly opposite where they were interred. The plaque reads “Opposite this tablet lie interned 3,000 men, formerly pensioners of the Royal Hospital, removed from the Infirmary Burial Ground in 1875.”

In 1925, during the extension of Devonport House (previously used as a home for orphans and sons of poor seamen, used after the extension as a nurses home), 1,247 skulls and 58 boxes of bones were removed from the site (which had been the previous burial ground), then reinterred in the Pleasaunce.

In 1926, East Greenwich Pleasaunce was sold to The Royal Borough of Greenwich for £450 as a public park and arboretum – an area for relaxation and reflection for the people of Greenwich, under the condition that the Admiralty would have the right to use the Pleasaunce as a burial site “in perpetuity”.

In February 1977, Greenwich’s third One O’ clock Club opened at East Greenwich Pleasaunce. One O’ Clock Clubs were designed to provide a social afternoon for children under school age, as well as their parents or carers.

The last burial in East Greenwich Pleasaunce took place in 1981.

Recent developments by The Royal Borough are;

In 200, The Royal Borough of Greenwich moved the children’s playground to its new location.

In 2005, a new memorial section was created consisting of a large bench and paved area. Shrubs and birch trees were planted adjacent to the area where the 1875 re-internment took place.

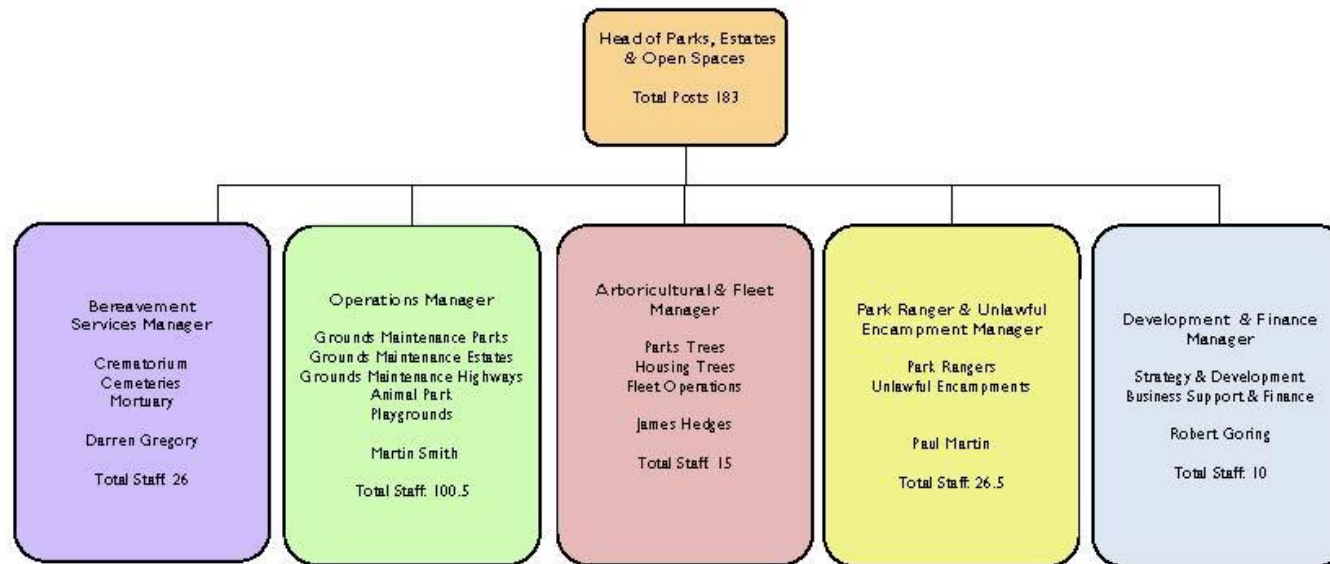
In 2006, a section in the north east of the park was fenced off to create a dog free area (incorporating the children’s playground) and The Friends of East Greenwich Pleasaunce was established and had a membership of 224 in its first year.

In 2009, a new Environmentally sustainable café building was built in the northern section of the park. This building also provide public toilets for the park.

Additional history can be found on the website of the Friends of East Greenwich Pleasaunce - <https://fegp.org/>

APPENDIX IV: Parks and Open Spaces Management Structure Chart – 2022

Parks, Estates & Open Spaces - Management Structure Chart Filled Posts 2022



APPENDIX V: Annual Maintenance Model – 2021/22

F07M EAST GREENWICH PLEASAUNCE (inc one o'clock club)		JAN	FEB	MAR	APR	MAY	JUN	JUL	AUG	SEP	OCT	NOV	DEC
line	Description												
1	spray all hard standing areas & weedkill channels				1								
2	edging half moon		1										
3	pedestrian grass mowing			2	2	3	3	3	2	2	2	1	
4	hedge cutting (inc laurel with secateurs)					1		1		1			
5	hedge base maint	1		1		1		1		1		1	
6	brushcutting & obstacles			1	1	1	1	1	1	1	1	1	
7	leaf clearance	1										1	1
8	deadhead roses					1		1		1			
9	rose bed maint			1		1		1		1			
10	rose bed maint	1										1	
11	pruning of roses			1									
12	rose bed pruning											1	
13	shrub bed maint			1		1		1		1			
14	shrub bed maint	1										1	
15	sweeping park	5	2	2	3	2	2	2	2	2	4	5	4
16	tree topiary (TREE GANG)							1					
17	tree feathering, stake/tie & base weeding			1				1					
18	tree line weeding	1		1		1		1		1		1	
DISTRICT 1 MINI-TRIPLE MOWING SITES													
line	Site	JAN	FEB	MAR	APR	MAY	JUN	JUL	AUG	SEP	OCT	NOV	DEC
MT23	F07M EAST GREENWICH PLEASAUNCE			2	2	3	3	3	2	2	2	1	

APPENDIX VI: Examples of Event leaflets



10th ANNIVERSARY PARKSfest 2018
The Friends of East Greenwich Pleasaunce
PRESENTS
**THE PLEASAUNCE
SUMMER FESTIVAL**
Entrances in Chevening and Halstow Road
SE10 0LB
Sunday 10th June 12noon – 5pm
A FREE afternoon with a variety of
Live Music

Art Exhibition,
Sports Programme,
Family Circus

Children's
Entertainment,
Dog Show

bar and
refreshments,
or bring
a picnic

SPONSORED BY

www.fegp.org
www.parksfest.org

TUDOR BARN ROYAL GREENWICH FESTIVALS in partnership with ROYAL Borough of GREENWICH



**ANNUAL
EASTER EGG HUNT**
FOR UNDER- AND OVER-FIVES
plus other fun activities!
Sunday 20th March 2016
The Bridge
East Greenwich Pleasaunce
1-4pm

BROWN & BROOKE SE3 FOR SALE

TESCO £2 per child Iceland

Moto2 CHILD CARE

www.thebridgegreenwich.co.uk

APPENDIX VII: 2013/18 ACTION PLAN

Key

	Action to be taken during the years indicated (resources permitting)
	Actions ongoing during the years identified

Item	Actions	2013	2014	2015	2016	2017	2018	Action By:
Signage	Install additional directional signage from the nearby main Woolwich Road		Completed					PE&OS
	Signposts from Woolwich Rd and Westcombe Park Station to advertise the park, café and The Bridge.		Completed					PE&OS
Pathways	Improve pathways within the pathways (applying for Section 106 Funding and other funding for this project)			Completed				PE&OS
	Refurbish existing path from Halstow Road to the Café. And install gravel terrace area in front of park café.		Completed					PE&OS
Refurbish former gardeners shed	Obtain funding (Playground to Podium) to refurbish former storage building for storage of FoG equipment.	Completed						PE&OS
Item	Actions	2013	2014	2015	2016	2017	2018	Action By:
Fences, benches and litter bins	Repaint / replace (non-playground) items with similar design and colour							PE&OS

Biodiversity	Install Bird Boxes in association with the friends group	Completed							PE&OS
Grave Furniture	Ensure that fallen headstones / monuments are either removed from site, or are repositioned to ensure safety								PE&OS
Management Plan	Review / amend Management Plan where appropriate. Seeking input from Friends of Group / other stakeholders								PE&OS
Ecology of the park	Carry out an assessment of the current ecology of site								PE&OS
	Increase mulching within the site using recycled materials								PE&OS
	Carry out arboricultural survey in the park	Completed							PE&OS
	Work in conjunction with City Orchards (Charitable Organisation) and FOG to organise work days to maintain the orchards								PE&OS
Lighting	Install lighting throughout the park and around the perimeter pathway from Halstow Road to Chevening Road (Playground to Podium Funding)	Completed							PE&OS
Item	Actions	2013	2014	2015	2016	2017	2018	Action By:	
Preserve historical artefacts in the Pleasaunce	Install signage to help preserve historical artefacts (e.g. gravestones)	Completed							PE&OS
	Promote historical significance (e.g. website, in marketing literature, interpretation signage etc)								PE&OS

To secure Inward Investment as appropriate	Work with Friends of Group to identify investment priorities and secure external funding where possible							PE&OS
Marketing	Investigate ways of improving marketing of site (through use of different mediums etc) and through improvements to current marketing							PE&OS
	Review how site is currently marketed, review and improve website							PE&OS
Playground	Upgrade the playground facilities (applying for Section 106 Funding for this project)		Completed					PE&OS
To achieve a recognised standard	Continue to retain the Green Flag Award (Ongoing after initial application)							PE&OS
Assist in creating a living tunnel	Working with The Bridge to create a living tunnel in the shrubbery of their playground by cladding a metal framework with willow.				Completed			PE&OS

Important Note: Improvement actions requiring investment are subject to funding being secured. There are no additional funds available from the Council unless it has been identified against a specific action.