

Indices of Deprivation 2019

Sally Watkins
Senior Public Health Manager (Knowledge & Intelligence)

With special thanks to Knowledge & Intelligence Section, Southwark Public Health Division

The Indices of Deprivation provides a place-based insight into deprivation

INDICES OF DEPRIVATION 2019

The Indices of Deprivation 2019 (IoD 2019) also known collectively as the Index of Multiple Deprivation (IMD 2019) is the measure of relative deprivation, which includes a wide range of indicators evaluating living conditions across England.

It is important to note that deprivation differs from poverty.

- An individual can be considered to be living in poverty if they lack the financial resources to meet their needs.
- An individual can be regarded as deprived if they lack a broader range of resources, not just income. For example employment, access to services, and local living conditions.

The IoD 2019 measures deprivation on a *relative* rather than an *absolute* scale, so a Lower Super Output Area (LSOA) or “neighbourhood” ranked 100th is more deprived than a neighbourhood ranked 200th, but this does not mean it is twice as deprived.

The IoD 2019 provides a *place-based measure* of deprivation. However it is important to recognise that this does not apply to every individual living within a particular area.

Reference

[Ministry of Housing, Communities & Local Government](#) The English Indices of Deprivation 2019 (IoD 2019)

The Indices of Deprivation is based on 39 indicators which are organised around 7 domains

INDICES OF DEPRIVATION 2019

The Indices of Deprivation 2019 is based on 39 indicators, organised around seven domains of deprivation. These are combined and weighted to form an overall score.

- For example, the income domain accounts for 22.5% of the overall indices, with the living environment domain accounting for 9.3%.

Indices of Deprivation 2019

Income

Measures the proportion of population experiencing deprivation relating to low income

22.5%

Employment

Measures the proportion of the working age population involuntarily excluded from the labour market

22.5%

Health and Disability

Measures the risk of premature death and impairment of quality of life through poor mental or physical health

13.5%

Education, Skills, and training

Measures the lack of attainment and skills in the local population

13.5%

Crime

Measures the risk of personal and material victimisation at a local level

9.3%

Barriers to Housing and Services

Measures the physical and financial accessibility of housing and local services

9.3%

Living Environment

Measures the quality of both the indoor and outdoor local environment

9.3%

Reference

[Ministry of Housing, Communities & Local Government](#) The English Indices of Deprivation 2019 (IoD 2019)

Three key measures are used to assess levels of deprivation at a local authority level

INDICES OF DEPRIVATION 2019

As patterns of deprivation at a local authority level are complex, there is no single measure that 'best' measures deprivation. Instead, three main measures are used in conjunction with each other.

- **Average Rank:** this measure summarises the average level of deprivation across a local authority, based on weighted ranks of all the neighbourhoods within it. Overall, local authorities that have both highly deprived and affluent communities will tend to average out in the overall rank. In contrast local authorities that are more uniformly deprived will tend to rank higher i.e. more deprived
- **Average Score:** this measure summarises the average level of deprivation across a local authority, based on the scores of all the neighbourhoods contained within it.
- **Proportion of LSOAs in the most deprived 10% nationally:** this measure summarises the proportion of LSOAs or neighbourhoods in the local authority that are in the most deprived 10% of neighbourhoods in England.

Reference

[Ministry of Housing, Communities & Local Government](#) The English Indices of Deprivation 2019 (IoD 2019)

Changes in Ranking in 2019

INDICES OF DEPRIVATION 2019

While Greenwich has seen an improvement in its ranking compared to other local authorities in England, the borough remains one of the most deprived in the country.

- Greenwich is ranked in the bottom quartile (25%) of local authorities in England for both the average rank and in the second most deprived quartile for average score measures.
- The borough has had a marked improvement using the rank of LSOAs in the most deprived 10% in England moving from 173 in 2015 to 191 in 2019 (out of 317).
- It is important to acknowledge that the IoD measures relative deprivation. While the ranking of Greenwich compared to other local authorities may have improved (from rank 50 to 60 out of 317), this does not necessarily indicate that absolute levels of deprivation in the borough have reduced.

Reference

[Ministry of Housing, Communities & Local Government](#) The English Indices of Deprivation 2019 (IoD 2019)

While there has been improvement in our ranking, Greenwich remains one of the most deprived boroughs

GREENWICH FINDINGS: OVERVIEW

While Greenwich has seen an improvement in its ranking compared to other local authorities in England, the borough remains one of the most deprived in the country.

- Greenwich is ranked in the bottom quartile of local authorities in England for both the average rank and average score measures.
- The borough is ranked more favourably using the rank of LSOAs in the most deprived 10% in England.
- It is important to acknowledge that the IoD measures relative deprivation. While the ranking of Greenwich compared to other local authorities may have improved, this does not necessarily indicate that absolute levels of deprivation in the borough have reduced.

Measure	Ranking out of 317 local authorities in England (1st = most deprived)	
	IoD 2015	IoD 2019
Rank of average rank	50 th	60 th
Rank of average score	78 th	88 th
Rank of LSOAs in most deprived 10%	173 rd	191 st

Reference

[Ministry of Housing, Communities & Local Government](#) The English Indices of Deprivation 2019 (IoD 2019)

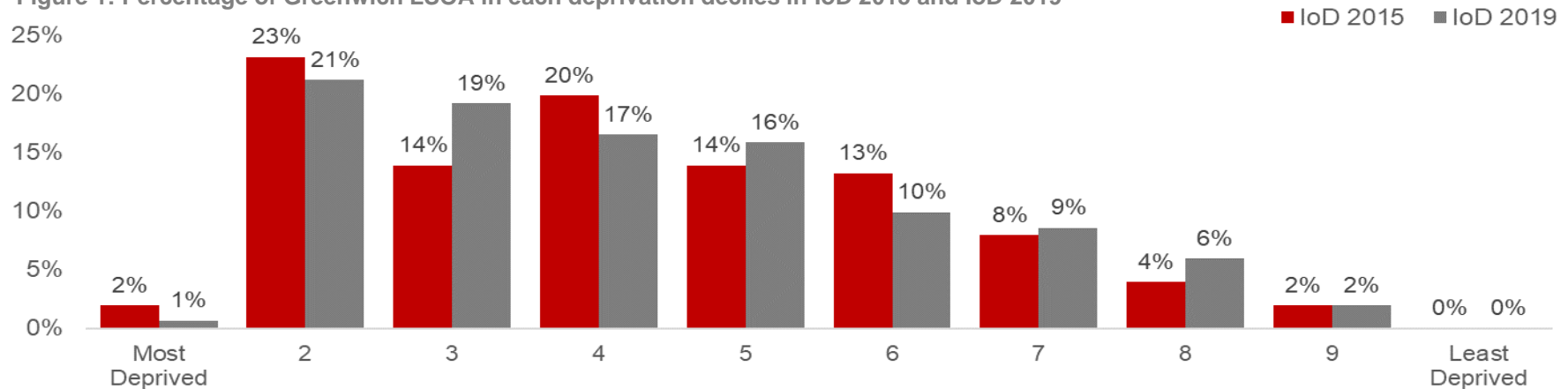
While there has been improvement in our ranking, Greenwich remains one of the most deprived boroughs

GREENWICH FINDINGS: OVERVIEW

The chart below illustrates the change in the percentage of Greenwich neighbourhoods (LSOAs) in each deprivation decile, comparing the IoD 2015 and IoD 2019.

- The changes in the most deprived deciles are small, however there has been a substantial increase in the 3rd and 8th deciles.
- The number of LSOAs in the least deprived decile has remained at zero.

Figure 1: Percentage of Greenwich LSOA in each deprivation deciles in IoD 2015 and IoD 2019



Reference

[Ministry of Housing, Communities & Local Government](#) The English Indices of Deprivation 2019 (IoD 2019)

The change in relative deprivation in Greenwich can be seen across the borough

GREENWICH FINDINGS: OVERVIEW

Figure 2: Indices of Deprivation 2015

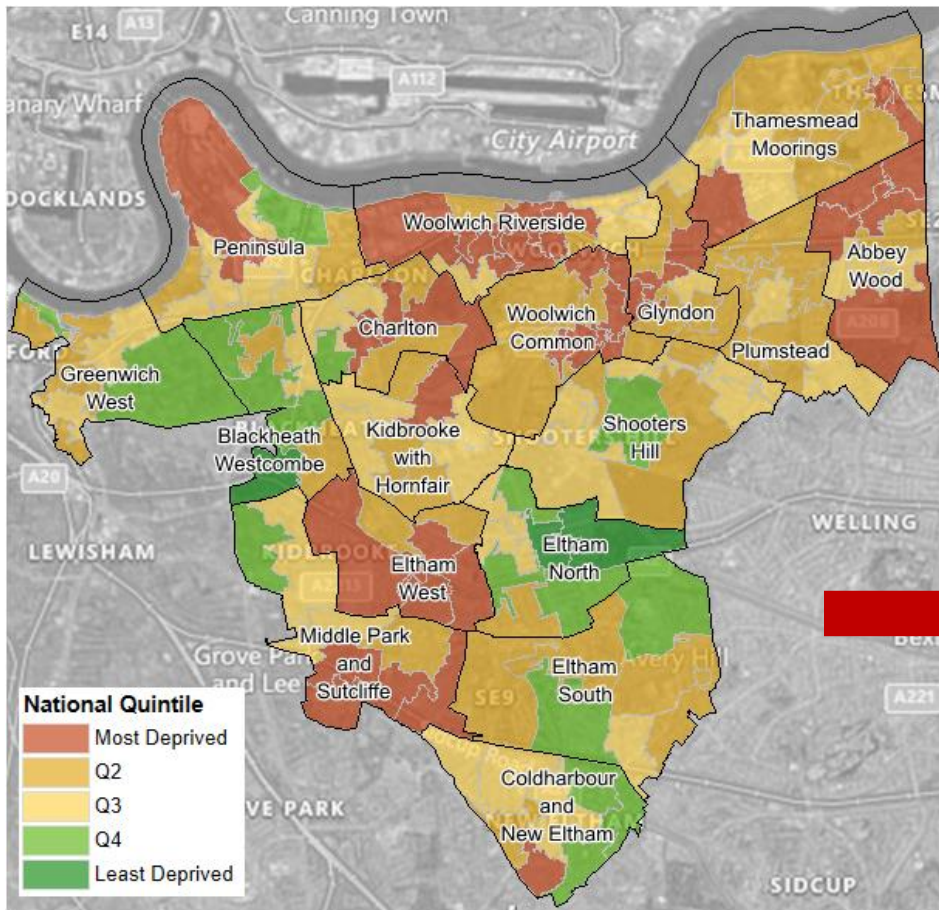
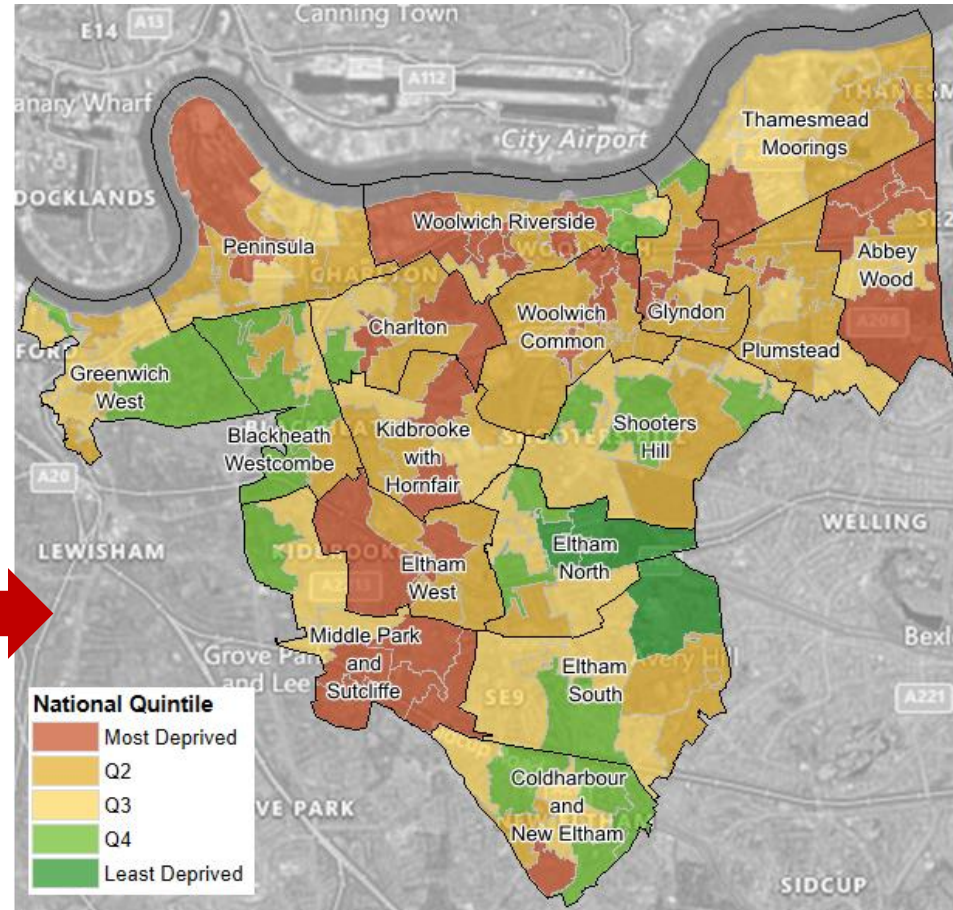


Figure 3: Indices of Deprivation 2019



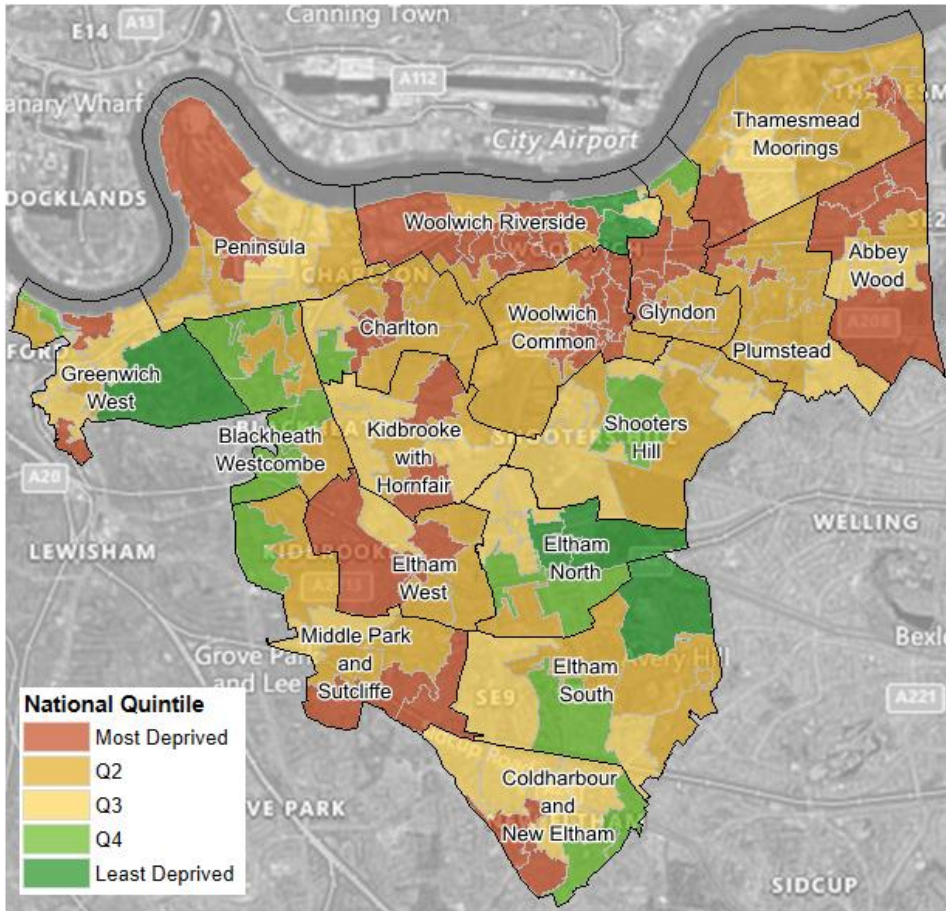
Note: Ranking out of 317 local authorities in England, with 1 being the most deprived.

Reference: [Ministry of Housing, Communities & Local Government The English Indices of Deprivation 2019 \(IoD 2019\)](#)
[Ministry of Housing, Communities & Local Government The English Indices of Deprivation 2015 \(IoD 2015\)](#)
Contains Ordnance Survey Data ©Crown Copyright and database right 2019

Almost a third of residents live in communities ranked in the 20% most income deprivates in England

GREENWICH FINDINGS: INCOME

Figure 4: Indices of Deprivation 2019 - Income



The income deprivation domain measures the proportion of the population experiencing deprivation relating to low income, including those in and out of work

- Greenwich is ranked in the bottom quartile of local authorities on both the average rank (39th) and average score (57th) measures
- This compares to a ranking of 31st and 45th respectively in the IoD 2015
- The most income deprived areas in the borough are located in the north, north east, and centre of Greenwich
- Almost a third of residents live in neighbourhoods ranked in the 20% most income deprivates in England
- In contrast, 4% live in neighbourhoods ranked in the 20% least income deprived

For details on indicators used to calculate this domain see [page 17](#)

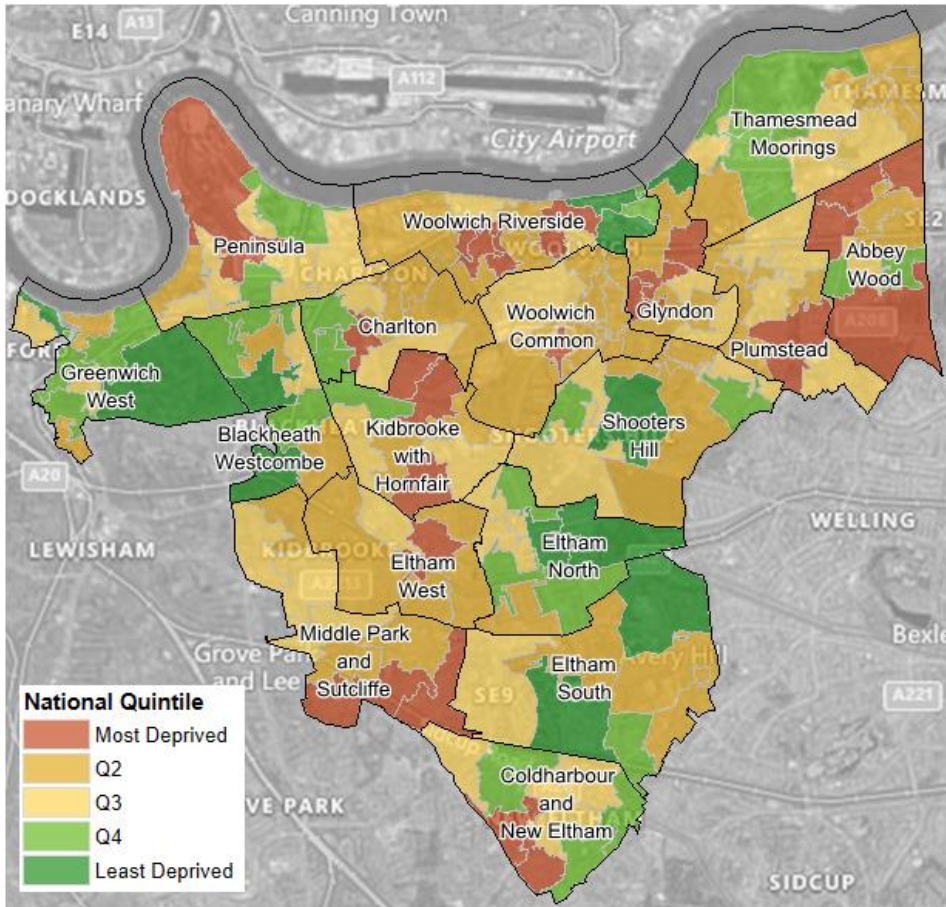
Note: Ranking out of 317 local authorities in England, with 1 being the most deprived.

Reference: [Ministry of Housing, Communities & Local Government The English Indices of Deprivation 2019 \(IoD 2019\)](#)
[Ministry of Housing, Communities & Local Government The English Indices of Deprivation 2015 \(IoD 2015\)](#)

Employment deprivation in Greenwich is spread across the borough

GREENWICH FINDINGS: EMPLOYMENT

Figure 5: Indices of Deprivation 2019 – Employment



The employment deprivation domain measures the proportion of the working age population in an area involuntarily excluded from the labour market

- Greenwich is ranked in the bottom half of local authorities on both the average rank (90th) and average score (107th) measures
- This compares to a ranking of 82nd and 97th respectively in the IoD 2015
- The most employment deprived areas are spread across the borough
- 15% of residents live in neighbourhoods ranked in the 20% most income deprivies in England
- In contrast, 7.5% live in neighbourhoods ranked in the 20% least income deprived

For details on indicators used to calculate this domain see [page 17](#)

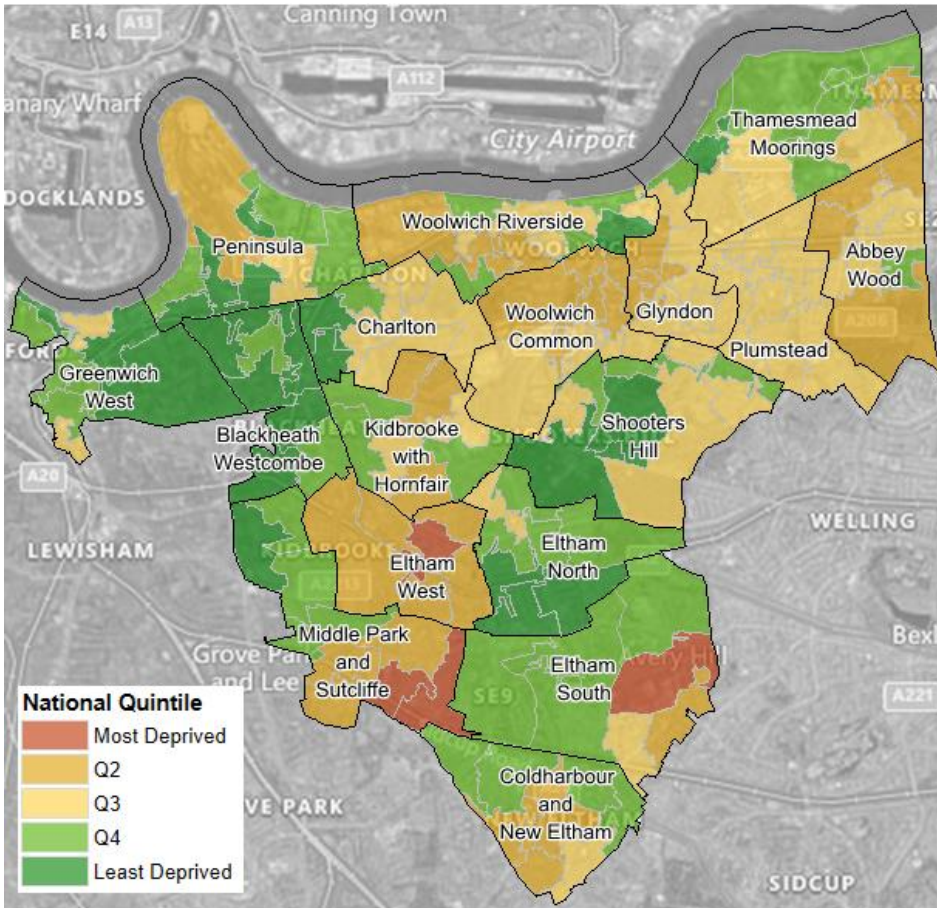
Note: Ranking out of 317 local authorities in England, with 1 being the most deprived.

Reference: [Ministry of Housing, Communities & Local Government The English Indices of Deprivation 2019 \(IoD 2019\)](#)
[Ministry of Housing, Communities & Local Government The English Indices of Deprivation 2015 \(IoD 2015\)](#)
Contains Ordnance Survey Data ©Crown Copyright and database right 2019

No communities in Greenwich fall within the most deprived in England for education, skills and training

GREENWICH FINDINGS: EDUCATION, SKILLS AND TRAINING

Figure 6: Indices of Deprivation 2019 – Education, Skills and Training



The education, skills and training deprivation domain measures the lack of attainment and skills in the local population, including both children and adults

- Greenwich is ranked in the top half of local authorities on both the average rank (193rd) and average score (218th) measures
- This compares to a ranking of 175th and 204th respectively in the IoD 2015
- The level of deprivation relating to education, skills and training is much lower than other domains.
- There are four areas in the south of the borough in the 20% most deprived education, skills and training domain, which contains 2.5% of the population.
- In contrast, 15% live in neighbourhoods ranked in the 20% least deprived areas of this domain

For details on indicators used to calculate this domain see [page 17](#)

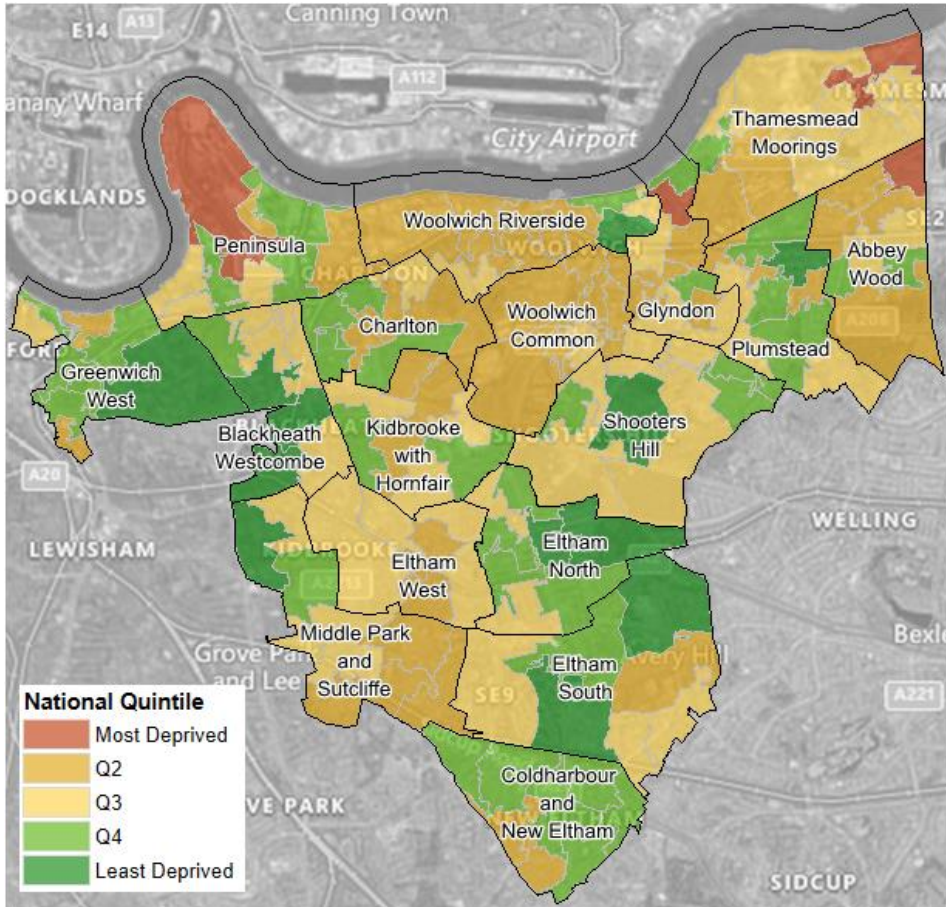
Note: Ranking out of 317 local authorities in England, with 1 being the most deprived.

Reference: [Ministry of Housing, Communities & Local Government The English Indices of Deprivation 2019 \(IoD 2019\)](#)
[Ministry of Housing, Communities & Local Government The English Indices of Deprivation 2015 \(IoD 2015\)](#)
Contains Ordnance Survey Data ©Crown Copyright and database right 2019

Four areas in Greenwich fall within the most deprived in England for Health and Disability

GREENWICH FINDINGS: HEALTH AND DISABILITY

Figure 7: Indices of Deprivation 2019 – Health and Disability



The health deprivation and disability domain measures the risk of premature death and the impairment of quality of life through poor physical or mental health

- Greenwich is ranked in the bottom half of local authorities on both the average rank (132nd) and average score (134th) measures
- This compares to a ranking of 108th and 111th respectively in the IoD 2015
- The level of deprivation relating to health and disability is much lower than other domains.
- There are four areas in the north of the borough in the 20% most health and disability deprived, which contains 3% of the population.
- In contrast, 8% live in neighbourhoods ranked in the 20% least deprived in this domain

For details on indicators used to calculate this domain see [page 17](#)

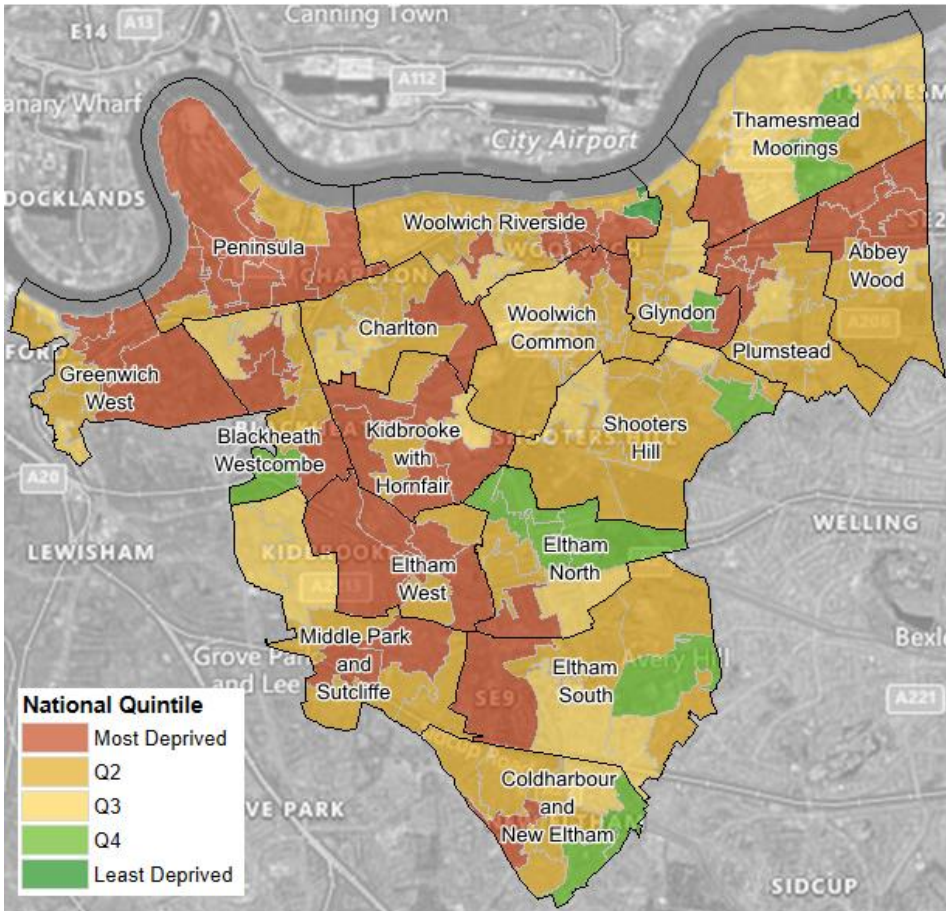
Note: Ranking out of 317 local authorities in England, with 1 being the most deprived.

Reference: [Ministry of Housing, Communities & Local Government The English Indices of Deprivation 2019 \(IoD 2019\)](#)
[Ministry of Housing, Communities & Local Government The English Indices of Deprivation 2015 \(IoD 2015\)](#)
Contains Ordnance Survey Data ©Crown Copyright and database right 2019

There are high levels of crime deprivation across the borough of Greenwich

GREENWICH FINDINGS: CRIME

Figure 8: Indices of Deprivation 2019 – Crime



The crime domain measures the risk of personal and material victimisation at local level

- Greenwich is ranked in the bottom quartile of local authorities on both the average rank (36th) and average score (45th) measures
- This compares to a ranking of 19th and 25th respectively in the IoD 2015
- There are high levels of crime deprivation across the borough with every ward containing at least one area in the top 20% most crime deprived in England, with the exception of Shooters Hill.
- There are 44 areas across the borough in the 20% most crime deprived, which contains 30% of the population.
- In contrast, less than 1% live in communities ranked in the 20% least deprived in this domain

For details on indicators used to calculate this domain see [page 17](#)

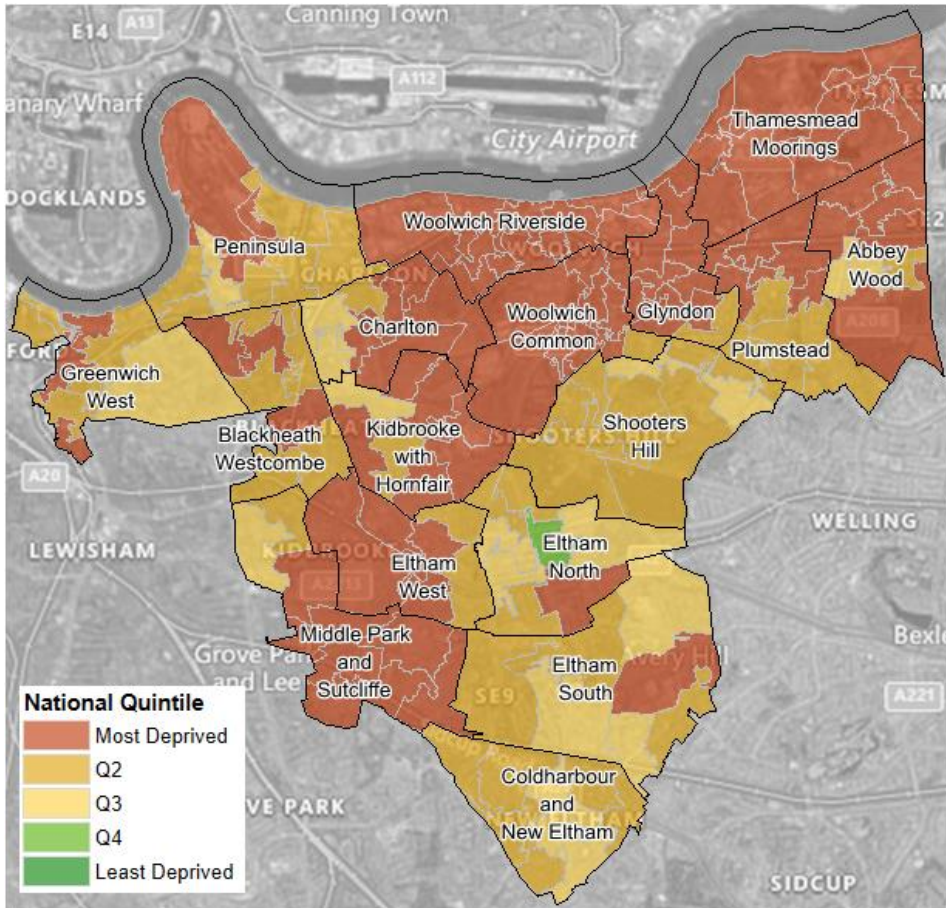
Note: Ranking out of 317 local authorities in England, with 1 being the most deprived.

Reference: [Ministry of Housing, Communities & Local Government The English Indices of Deprivation 2019 \(IoD 2019\)](#)
[Ministry of Housing, Communities & Local Government The English Indices of Deprivation 2015 \(IoD 2015\)](#)

Nearly two thirds of Greenwich residents live in the top 20% most deprived in England.

GREENWICH FINDINGS: BARRIERS TO HOUSING AND SERVICES

Figure 9: Indices of Deprivation 2019 – Barriers to Housing and Services



The barriers to housing and services domain Measures the physical and financial accessibility of Housing and local services

- Greenwich is ranked as one of the most deprived local authorities in England in both the average rank (17th) and average score (16th) measures
- This compares to a ranking of 35th and 44th respectively in the IoD 2015
- This is the only domain to see an increase in Greenwich's ranking relative to other local authorities between the IoD 2015 and IoD 2019.
- Nearly two thirds of Greenwich residents live in the top 20% most deprived in England.
- In contrast, there are no residents in Greenwich living in communities ranked in the 20% least deprived in this domain

For details on indicators used to calculate this domain see [page 17](#)

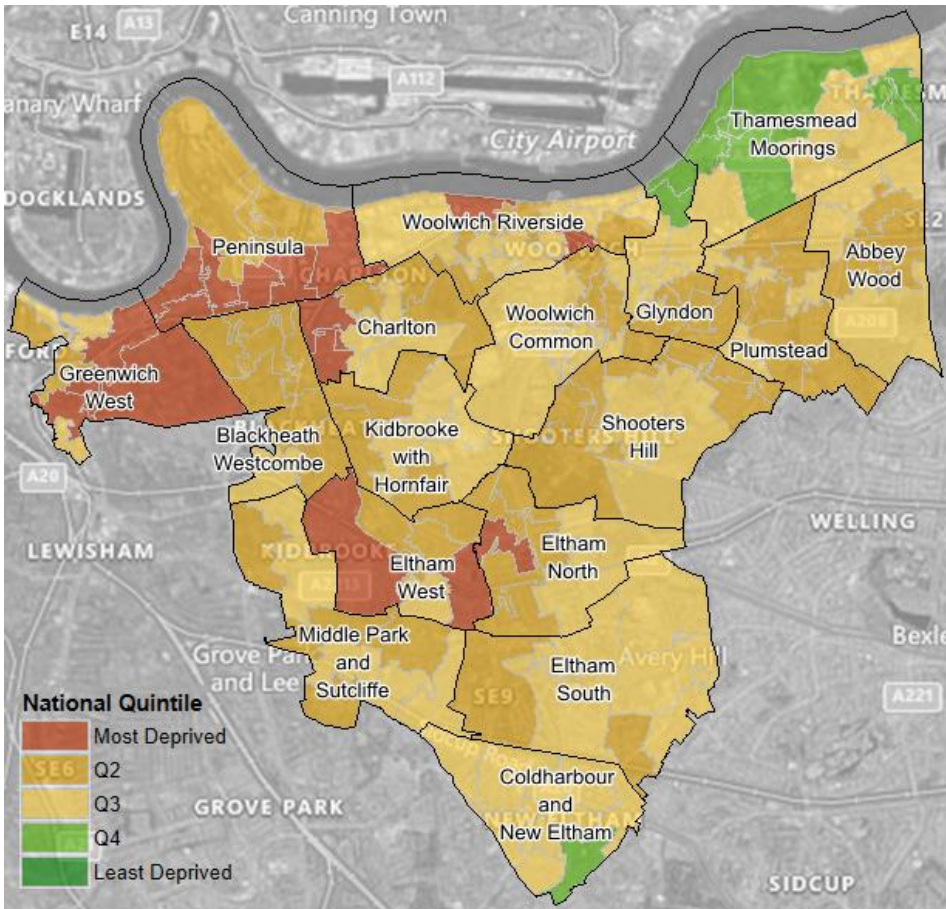
Note: Ranking out of 317 local authorities in England, with 1 being the most deprived.

Reference: [Ministry of Housing, Communities & Local Government The English Indices of Deprivation 2019 \(IoD 2019\)](#)
[Ministry of Housing, Communities & Local Government The English Indices of Deprivation 2015 \(IoD 2015\)](#)
Contains Ordnance Survey Data ©Crown Copyright and database right 2019

Key Point

GREENWICH FINDINGS: LIVING ENVIRONMENT

Figure 10: Indices of Deprivation 2019 – Living Environment



The living environment deprivation domain measures the quality of the local environment, both indoor and outdoor

- Greenwich is ranked as one of the most deprived local authorities in England in both the average rank (73rd) and average score (92nd) measures
- This compares to a ranking of 73rd and 97th respectively in the IoD 2015
- There are high levels of deprivations relating to the living environment to the west of the borough, with 12% of residents living in the 20% most deprived areas in England
- In contrast, there are no residents in Greenwich living in communities ranked in the 20% least deprived in this domain

For details on indicators used to calculate this domain see [page 17](#)

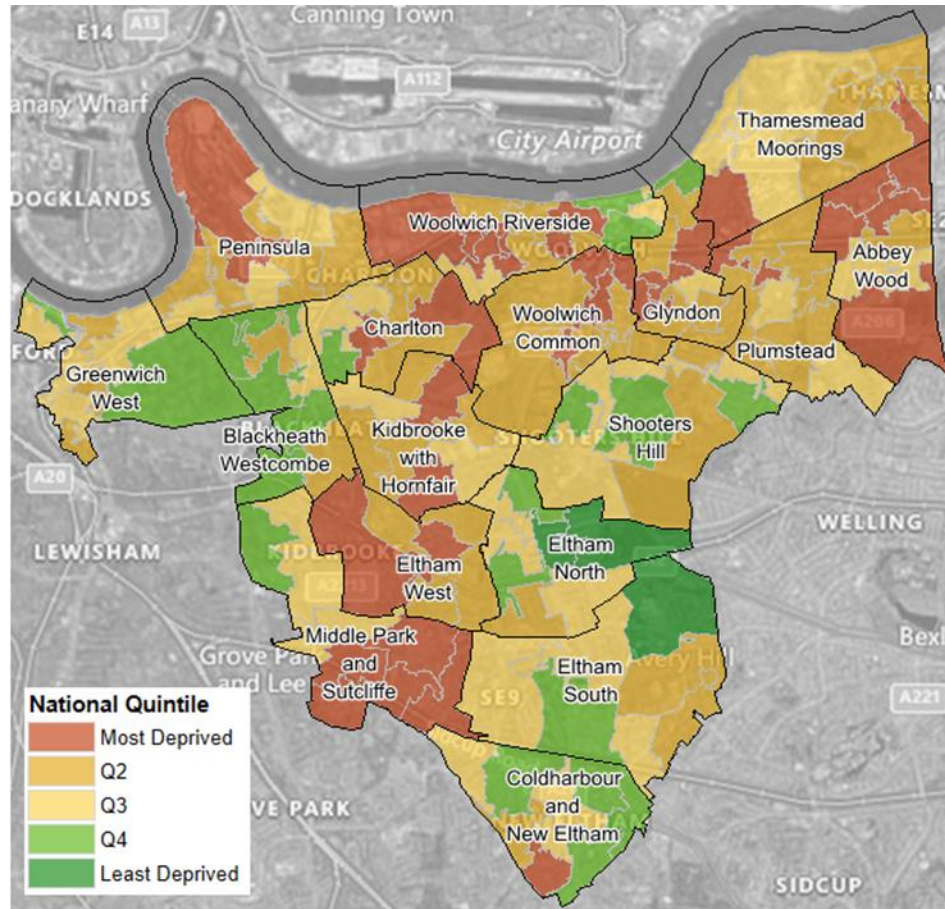
Note: Ranking out of 317 local authorities in England, with 1 being the most deprived.

Reference: [Ministry of Housing, Communities & Local Government The English Indices of Deprivation 2019 \(IoD 2019\)](#)
[Ministry of Housing, Communities & Local Government The English Indices of Deprivation 2015 \(IoD 2015\)](#)
Contains Ordnance Survey Data ©Crown Copyright and database right 2019

While there has been improvement in our ranking, Greenwich remains one of the most deprived boroughs

SUMMARY

Figure 3: Indices of Deprivation 2019



The Indices of Deprivation 2019 is the official measure of relative deprivation in England

- Greenwich is ranked in the bottom quartile of local authorities on both the average rank (43rd) and average score (72nd) measures.
- Over a fifth of our residents live in areas ranked in the most deprived 20% in England.
- In contrast, only 1.6% live in areas ranked in the least deprived 20%.
- Like many London boroughs, Greenwich has seen an improvement in its' ranking relative to other local authorities since 2015.
- The borough's ranking has improved across six of the seven domains. However high levels of deprivation remain, particularly relating to barriers to housing and crime.

For details on indicators used to calculate this domain see [page 17](#)

Note: Ranking out of 317 local authorities in England, with 1 being the most deprived.

Reference: [Ministry of Housing, Communities & Local Government](#) The English Indices of Deprivation 2019 (IoD 2019)
Contains Ordnance Survey Data ©Crown Copyright and database right 2019

The Indices of Deprivation is based on 39 indicators which are organised around 7 domains

INDICES OF DEPRIVATION 2019

Indices of Deprivation 2019

Income

Adults & children in income support Families

Adults & children in income based JSA or ESA families

Adults & children in Pension Credit Families

Adults & children in Child or Working Family Tax Credit Families

Asylum seekers in receipt of subsistence or accommodation Support

Adults & children in Universal Credit families where no adult is in 'working – no requirements' Conditionality regime.

Employment

Claimants of Job Seekers Allowance

Claimants of Employment & Support Allowance

Claimants of Incapacity Benefit

Claimants of Severe Disablement Allowance

Claimants of Carers Allowance

Claimants of Universal Credit in the 'Searching for work' and 'No work requirements' conditionality groups

Health and Disability

Years of potential life lost (YPLL)

Comparative illness and disability ratio

Acute morbidity

Mood and anxiety disorders

Education, Skills, and training

Attainment among children and young people at:

- Key Stage 2
- Key stage4

Secondary school absence

Staying on in education

Entry to higher education

Adult skills:

Adults with no or low qualifications

English language proficiency

Crime

Recorded crime rates for:

- Violence
- Burglary
- Theft
- Criminal damage

Barriers to Housing and Services

Geographical barriers:

Road distance to:

- Post office
- Primary school
- General store or supermarket
- GP surgery

Wider barriers:

Household overcrowding

Homelessness

Housing affordability

Living Environment

Indoors living environment:

Housing in poor condition

Houses without central heating

Outdoors living environment:

Air quality

Road traffic accidents

Reference: [Ministry of Housing, Communities & Local Government](#) The English Indices of Deprivation 2019 (IoD 2019)