



TRINITY  
PARK

WOOLWICH



# HOW TO CONNECT YOURSELF TO THE VIDEOS

This is a virtual exhibition. Each page of the exhibition has a video clip which will explain the information and give you more detail on the options for your estate. The video clips can be viewed using the QR code on each page and the guide below shows you how to do this.

If you are reading the booklet you received in the post

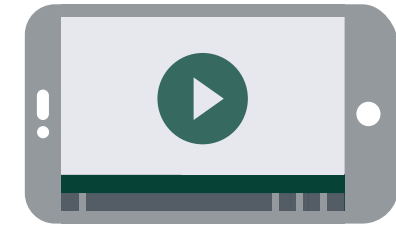
1 Look for the QR code on each page



2 iPhone/iPad users should open the Camera app, point it at the QR code, and follow the link to view the video clip. Android users should use the QR code scanner app, point it at the QR code, and follow the link to view the video clip. You may need to download the QR code scanner app.



3 Watch the video clip on your device



## If you are viewing the booklet online via your device

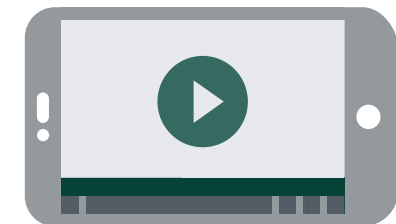
1 Look for the QR code on each page



2 Click on the QR code and follow the link to view the video clip



3 Watch the video clip on your device



Hello and welcome to the virtual exhibition event for Trinity Park Woolwich.

This virtual event will present to you the findings from the previous event and the masterplan, looking in detail at both Morris North and Morris South.

See the video for hello and welcome



## Today we will be looking at



Feedback from the last consultation event



The existing site



The Masterplan for Morris North and Morris South and the proposed elevations



The next steps moving forward to planning submission

## Engagement Programme and Events timeline



At Trinity Park Woolwich activity has been continuing...

- ✓ Morris South has been fully hoarded, and Morris North has been partially hoarded.
- ✓ Soft strip and asbestos removal works commenced in July 2020 - this involved removing the contents and finishes of the existing buildings, such as carpets, doors, skirting boards and any remaining furniture. The asbestos within the buildings could then safely be removed.
- ✓ Demolition of low-level buildings commenced in August 2020, and Tivoli Gardens in Morris South is nearly half demolished.
- ✓ Demolition of the high-rise blocks on Morris South started mid August, and the first 10 storey building 'Lolland House' was demolished. We have since demolished the 10 storey 'Elsinore House', and are moving on to the demolition of the third block.
- ✓ Works to Morris North have also progressed well, and the majority of Harden Court and Albion Court have now been demolished
- ✓ We have installed dust, noise and vibration monitors around the site and our works are monitored at all times to ensure we are working within the permitted limits as agreed with RBG.

See the video for what we have been doing so far



At the last exhibition, which took place in October 2019, you told us what you liked and disliked about your area. The key aims of this Introductory Event was to inform you about the initial works and provide valuable information in relation to the indicative programme, the hoarding strategy and the demolition process.

See the video for previous events feedback



## KEY FINDINGS

Local shops and a small supermarket was the more desired facilities among respondents

Local residents also stated they wanted the development to be 'in sympathy with the existing architecture', with 'traditional streets' and 'well-planned spaces'

Sense of community

Improve pedestrian access from Woolwich Road

Improve connections to Maryon Park

Enhance local green and maintain mature trees

Need for well-lit streets and safer environment

Provide more information on parking strategy during demolition

Minimise disturbance during demolition period

Neighbours wanted to learn more about the design options and quality of the new homes

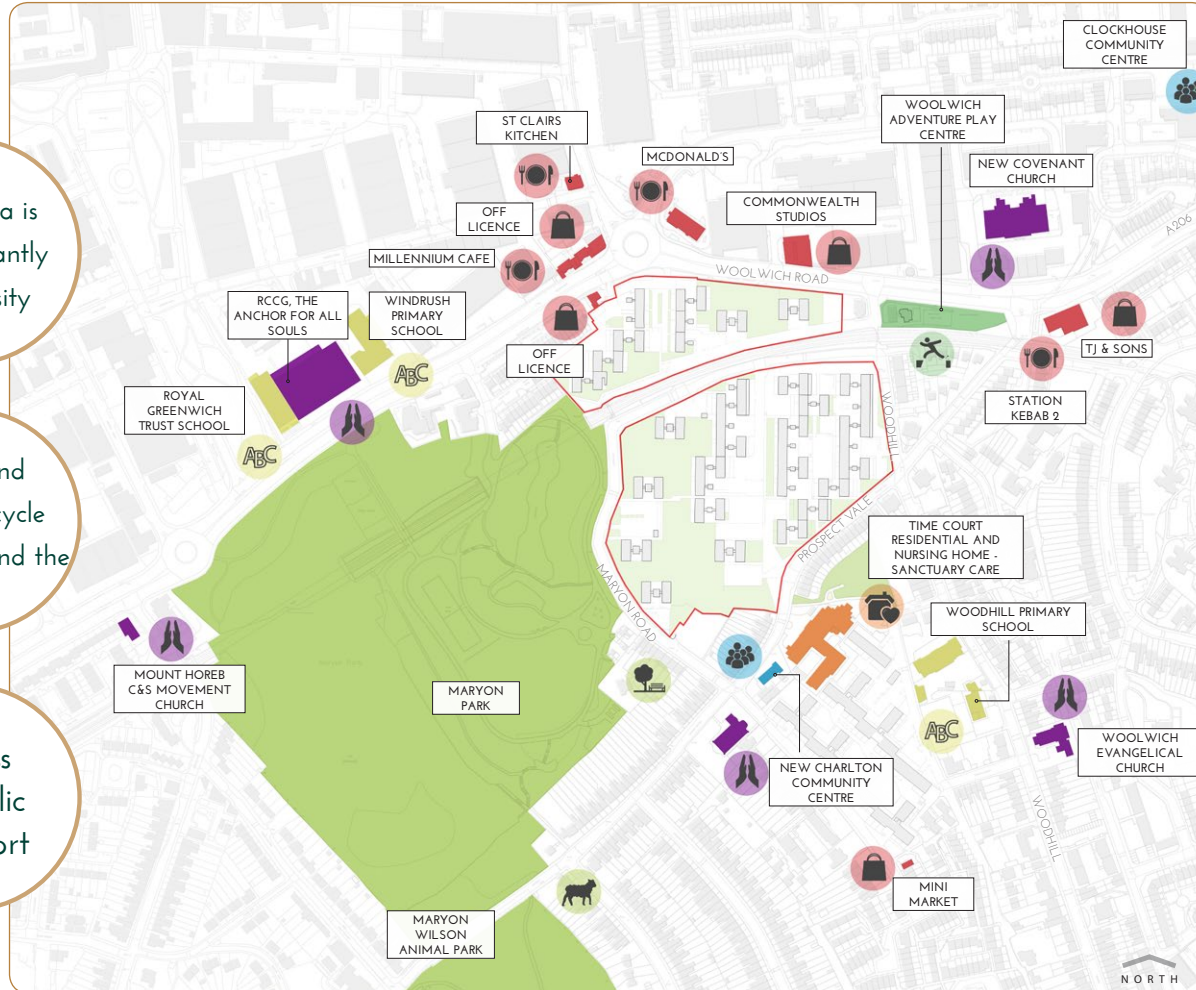
There was positive feedback on the displayed information and introductory event

The Trinity Park site is, formerly Morris Walk Estate, is located approximately 1.5 miles to the west of Woolwich Town Centre. Trinity Park comprises of two sites Morris north and Morris South; with the railway tracks forming a dividing line. A number of amenities and facilities surround the site in addition to green space to the south and west.

See the video for site background



- Local area is predominantly low-density
- Local and national cycle routes around the site
- Access to public transport



- RESTAURANT/ CAFE/ PUB
- SHOP/OFF LICENCE/ GROCERIES
- COMMUNITY CENTRE
- EDUCATION
- PLACE OF WORSHIP/ COMMUNITY
- NURSING HOME
- LEISURE/PARK/ OUTDOOR ACTIVITY

The new masterplan will transform Morris North and Morris South by delivering homes of the highest quality and creating a distinct sense of place and community. The proposed designs for Morris North and Morris South are unique and draw on the intrinsic characteristics of each site and their context.

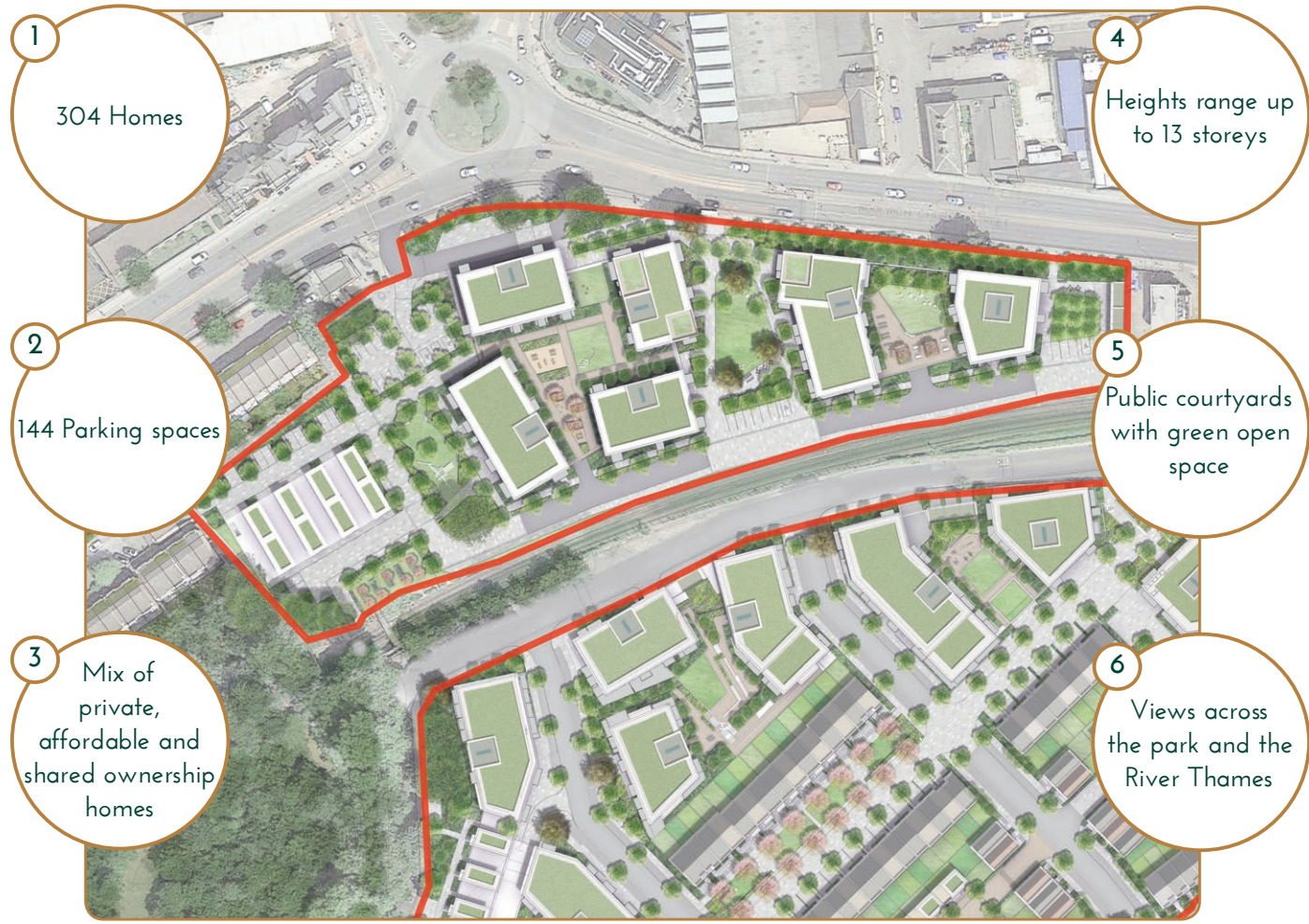
See the video for the masterplan





Located along Woolwich Church Street, the proposed design for Morris North consists of new apartment blocks and houses that range in height up to 13 storeys, which will provide a total of 304 new homes (296 new flats set within high quality modern apartment living and 8 new houses).

See the video for Morris North



The Morris South site is bound to the north by the rail line and to the south by Prospect Vale. The site benefits hugely from the adjacent Maryon Park, with its open space, mature trees and extensive landscaping. Maryon Park Avenue, a new tree lined route that draws these elements into the site, runs through the middle of the proposed masterplan and connects Maryon Park in the west with the arrival square in the east and Woolwich Dockyard beyond. A clear and continuous design language links the houses and apartment buildings along this route.

See the video for Morris South



## Feedback

Thank you for taking part in this exhibition. We would really like to know your thoughts about what you have seen. You can do this by using the feedback QR code on your leaflet.

See the video for the next steps...



## Next steps...

We continue to progress with the demolition works on the site.

We are reviewing comments from the public exhibition and are finalising the design and layout as a result of these.

We continue to work with the RBG's Planning Team and other key stakeholders to finalise the planning application plans and reports for planning submissions.

## CONTACT US:

Woolwich Estates Team:  
[Woolwich.Estates@royalgreenwich.gov.uk](mailto:Woolwich.Estates@royalgreenwich.gov.uk)

Alexandra Robins:  
[Alexandra.Robins@lovell.co.uk](mailto:Alexandra.Robins@lovell.co.uk)





TRINITY  
PARK

WOOLWICH

