

Royal Greenwich – a great place to grow up!



Childcare
Options
Royal Greenwich

Dear Providers

Wow! The end of term already! We are so grateful for all of the amazing commitment and dedication by all of you – our team love working with you. We are here for you throughout the Summer (and will help with 30 hour checks for parents)

Here's the link to the Met Office to keep an eye on the weather <https://www.metoffice.gov.uk/>

There's some great activities going on in Greenwich – at the libraries, children's centre and holiday schemes – so be sure to signpost parents and carers to the Families Information Service.

[Summer Activities](#)

Fun things to do in Royal Greenwich during the Summer Holidays

There's no reason to be bored in our borough this summer as there are a whole host of activities and events to keep young minds fresh and bodies active.

[Families Information Service](#)



Early Years &
Childcare



Things to do



Care &
Support
Services



Children's
Centres



Health

Have a wonderful Summer for those you staying open and for those of you taking time off, enjoy every moment.

Kallie – Team Leader, Kerry, Rachel, Elaine, & Rebecca – Advisors, Danielle & Janet – Funding



Main telephone lines are not fully available but if you provide a phone number we will call you right back and speak to you in person – we are open 9am – 5pm Mon - Fri.

Parents FIS@royalgreenwich.gov.uk

Providers Childcare-support@royalgreenwich.gov.uk

Miss a copy of the e-bulletin?

Catch up here and check out links to important information sources

https://www.royalgreenwich.gov.uk/info/200283/nurseries_and_early_learning/2183/early_years_team_information_for_providers/2

Early Years & Childcare Autumn Training Events ***coming soon***



Booking Please download free Zoom app on device of your choice <https://zoom.us/download>

- 📧 For info email eyc.training@royalgreenwich.gov.uk
- 📧 FIND TRAINING EVENTS HERE [Courses \(royalgreenwich.gov.uk\)](https://royalgreenwich.gov.uk/courses)

Please note that if you accidentally book training course with the Schools Service – it is not subsidised and you will be charged the full rate. Subsidised training only available via the PVI and CM link – subsidised EYFS, Childcare and Safeguarding courses found here

<https://servicestoschools.royalgreenwich.gov.uk/courses/pvi>

Healthy Early Years London – more important than ever!

NEXT SUBMISSION DATE for your bronze application

Each month we will share a submission due date – get in touch beforehand to get tailored 1:1 help with your application – found out how to complete quickly and simply – you only need bullet points or short sentences to capture your great practice!

Monday 16 August

Contact us NOW to book your 1:1 support session with Rebecca and Gillian

childcare-support@royalgreenwich.gov.uk

Autumn Dates - Monday 27 September | Monday 22 November



30 Hours Autumn Term 2021

1. You must log into your childcare account and re-apply or reconfirm your code or go to www.childcarechoices.gov.uk on time
2. You must apply for and renew your code before **31 August 2021**
3. Take your 30 hour code and evidence of your reapplication to your usual early years setting
4. Contact Families Information Service for advice on 020 8921 6921 fis@royalgreenwich.gov.uk
5. The local authority will need confirm to the setting or school whether you are able to take up your place in Autumn

Apply for a 30 hours code in good time. Do it before the summer holidays.
childcarechoices.gov.uk



Catch up on YouTube recordings of EYFS briefings to date

More coming in Autumn



https://www.youtube.com/watch?v=7QENX0_qej4



<https://youtu.be/nM6MKOaDEJw>



<https://youtu.be/gAvn3qUQ3IE>



Help for early years providers

🔔 Get alerts for new EYFS resources

[Sign up to get emails when we add new early years foundation stage resources to this website](#)

Click on this form to get automatic updates from the DFE

<https://docs.google.com/forms/d/e/1FAIpQLSdZbPz-447CADTErT9eDIIU4yKfsEhyJyIC8UIfyFAQueEteJw/viewform>

Ofsted “We’re not in the game of tricking people or catching them out. We’re looking to see settings as they are. We don’t want people worrying about what they think we require, when that may not be the case.”

Guidance

Registered early years providers

Published 22 July 2021

<https://www.gov.uk/government/publications/ofsted-eif-inspections-and-the-eyfs/registered-early-years-providers>

Contents

1. [Early years foundation stage \(EYFS\) reforms](#)
2. [Covid-19 \(coronavirus\) pandemic](#)
3. [Modifications/disapplications of the EYFS](#)
4. [Inspection practice](#)

Guidance

The EYFS in schools

Published 22 July 2021

<https://www.gov.uk/government/publications/ofsted-eif-inspections-and-the-eyfs/the-eyfs-in-schools>

Contents

1. [Early years foundation stage \(EYFS\) reforms](#)
2. [Inspection practice](#)
3. [Covid-19 \(coronavirus\) pandemic](#)
4. [Modifications/disapplications of the EYFS](#)

Join our Autumn Briefings to know more about Ofsted's position!

Removing misconceptions to ensure inspection process is as clear as possible, and reduce anxiety.

It's in everyone's interest that inspection helps deliver a good quality of care for all young children.

How provider is doing to get back on track (after Covid disapplication), how it's addressing any gaps in learning and how it's ensuring that the children are ready for their next stage of education.

Will Ofsted expect providers to show the progress of a child tracked against the revised non-statutory guidance, 'Development matters'?

No preferred method of how settings assess children's progress. Inspection handbook outlines how will gather evidence through observation and discussion

Inspectors to find out about **story of a child**, including:

- what they knew and could do when they started
- what they can do now and how you got them there
- what your plans are for that child so that they are ready for their next stage of learning

Getting to know children and finding out what they know and can do is something early years practitioners are skilled at. This is what is important. Whatever 'system' providers have in place for the assessment of young children shouldn't take adults away from those important interactions.

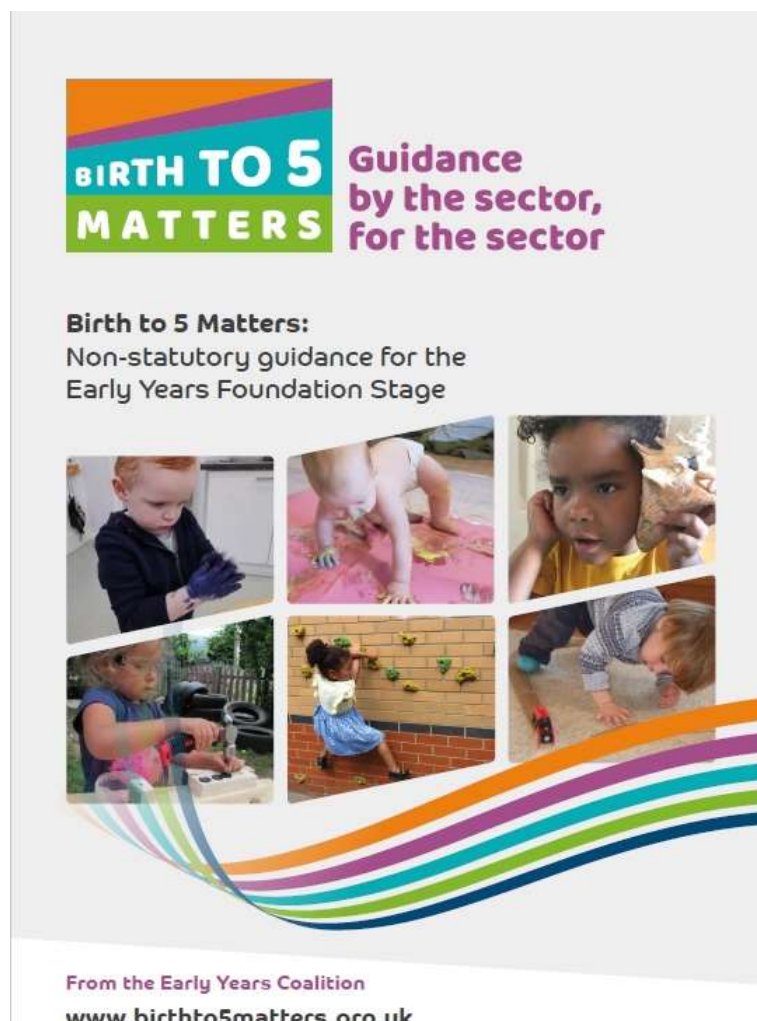
Inspectors do not expect to see documentation other than set out in EYFS. They will use the evidence gathered from discussions and observations to judge the overall quality of the curriculum provided for children.



https://assets.publishing.service.gov.uk/government/uploads/system/uploads/attachment_data/file/1004234/Development_Matters_Non-statutory_Curriculum_Guidance_Revised_July_2021.pdf

New look Development Matters... No substantive changes – it looks more accessible and user friendly!

Here also the Birth to 5 Matters <https://www.birthto5matters.org.uk/>





An Inspector Calls

Guidance

Ofsted: coronavirus (COVID-19) rolling update

<https://www.gov.uk/guidance/ofsted-coronavirus-covid-19-rolling-update>

Ofsted have set out our inspection plans for the remainder of the academic year.

For the rest of the summer term, inspection activity will mainly be on site. In the notification call before an inspection, providers and inspectors will agree safety measures to ensure the inspection is COVID-19 secure. Inspectors will also take a lateral flow test before arriving at the setting.

Any 'full' education inspection framework (EIF) inspections carried out in the summer term will maintain the 4 key judgements, but with additional flexibility in recognition of current contexts.

Registered early years providers

On-site EIF inspections of registered early years providers began from 4 May. Providers prioritised:

- judged less than good at their last inspection (including those who received an interim visit in the autumn term)
- that registered recently but have not been inspected
- whose first inspection is overdue
- that were not inspected in the last inspection cycle due to the pause in routine inspection

Ofsted will continue to carry out urgent inspections if they have significant concerns about a provider.

Regulatory work

Ofsted will continue with our vital regulatory work in early years. The safety and well-being of children is Ofsted's priority and they will take urgent action where they have concerns.

Ofsted will:

- continue with on-site visits where there are urgent safeguarding concerns
- carry out monitoring visits, as necessary— these will continue to be a combination of on site/off site/blended, as appropriate
- continue with registration work in early years carefully risk assessed in line with government guidance

Providers on the Childcare Register

Ofsted began inspecting providers on the Childcare Register in April 2021. Ofsted inspect 1 in 10 providers registered on the Childcare Register each year and select which providers to inspect on a

proportionate and risk basis. They will contact some providers to find out whether they are currently operating and available for inspection.

Inspection of provision registered only on the Childcare Register (either or both parts) is a compliance inspection. It is not to make judgements about the quality of the provision but to make sure that the provider is complying with the requirements of the register.

Early years and childcare providers

After on-site visits or off-site activity, if Ofsted take action or ask a provider to take action to meet legal requirements, they will publish an outcome summary on [reports website](#).

Sending documents and forms

Please use Ofsted online forms, if possible, for early years

If Ofsted have previously asked you to post documents, please either scan or photograph them and send with your unique reference number (URN) to enquiries@ofsted.gov.uk.

Notifications

If you have any confirmed cases of COVID-19 in the setting (either child or staff member), or if your setting has been advised to close as a result, you should [report this to Ofsted as soon as reasonably practical](#), and in any case within 14 days. Notifications of confirmed cases of COVID-19 will not prompt a regulatory visit from Ofsted.

Fast-track application process

To support local authorities and registered early years and childcare settings, Ofsted have put in place temporary arrangements that allow them to fast-track applications and requests from existing providers only to operate provision in a different way or to set up additional premises. Contact the early years and childcare service for further information.

[Research commentary: teaching about sex, sexual orientation and gender reassignment](#)

Chris Jones, Ofsted's Director, discusses research on teaching about the protected characteristics of sex, sexual orientation and gender reassignment in England's schools.

[International early learning and child wellbeing](#)

Findings from the international early learning and child wellbeing study (IELS) in England.

UPDATES – From Department for Education

A letter from the Education Secretary to education leaders



https://educationhub.blog.gov.uk/2021/07/08/a-letter-from-the-education-secretary-to-education-leaders/?utm_medium=email&utm_source=govdelivery

Education Secretary Gavin Williamson has written to education leaders to thank them for their effort and work over the course of the pandemic and to break down some of the ways in which the move to Step 4 of the Government's roadmap out of the pandemic will reduce restrictions on the sector.

He also adds that “From August 16th, those under the age of 18 years old will no longer be required to self-isolate if they are contacted by NHS Test and Trace as a close contact of a positive COVID-19 case. Instead, children, or their family members, will be contacted by Test and Trace, informed they have been in close contact with a positive case and advised to take a PCR test.”

Guidance Updates: [COVID-19 Response: Summer 2021](#)

- [Actions for schools during the coronavirus outbreak](#)
- [Actions for early years and childcare providers during the coronavirus outbreak](#)
- [Guidance for special schools and other specialist settings](#)
- [Assessment processes for selective school admissions](#)
- [Actions for FE colleges and providers during the coronavirus outbreak](#)
- [Guidance for higher education providers](#)
- [Use of PPE in education, childcare and children’s social care](#)
- [Evidence summary: COVID-19 - children, young people and education settings](#)

Guidance

Actions for early years and childcare providers during the COVID-19 pandemic

Updated 19 July 2021

Contents

1. [Main changes to previous guidance](#)
2. [Who this guidance is for](#)
3. [Who this guidance does not apply to](#)
4. [Summary](#)
5. [Overview](#)
6. [Responsibilities of early years providers and local authorities](#)
7. [Stepping measures up and down](#)
8. [Control measures](#)
9. [Other considerations for operating the setting](#)
10. [Parent and child groups](#)
11. [Charging parents and carers if their child is unable to take up their place](#)
12. [Insurance](#)
13. [Other guidance available](#)

Blog

The Education Hub

<https://educationhub.blog.gov.uk/2021/07/06/parents-pupils-teachers-and-students-find-out-what-step-4-of-the-covid-roadmap-means-for-you/>

One of the key changes is that pupils or students will no longer be required to remain in year group or classroom bubbles and children will be able to mix freely in the early years. Face coverings will also no longer be recommended in any setting and social distancing will no longer be necessary.

It is still necessary to be careful and that's why it remains essential that secondary pupils, teachers, staff and their families continue to test themselves for the virus and isolate if positive or if they have been in close contact with a positive case – but we will be able to see the back of the wholesale isolation of groups of pupils from 16 August in time for the autumn term.

Close contacts can be anyone who:

- lives in the same household as someone with COVID-19 symptoms or who has tested positive for COVID-19
- has had any of the following types of contact with someone who has tested positive for COVID-19:
 - face-to-face contact including being coughed on or having a face-to-face conversation within 1 metre
 - been within 1 metre for 1 minute or longer without face-to-face contact
 - been within 2 metres of someone for more than 15 minutes (either as a one-off contact or added up together over 1 day)
 - travelled in the same vehicle or a plane

Here the DFE answer your questions on what these changes mean for you, whether you're a parent, carer, pupil, teacher or student.

Early years

What will happen if there's a confirmed case in an early years setting?

The DFE are removing the need to limit mixing between groups and contact tracing conducted by staff in the early years settings, schools and colleges. NHS Test & Trace will now oversee contact tracing in all education settings.

Settings should continue to report cases to Ofsted as previously.

From 16 August, the legal requirement to self-isolate for contacts of a positive case will end for everyone aged under 18 but children should stay at home if they have symptoms of Covid or a positive test result.

Will parents be allowed to go into nurseries at drop off and pick up?

There won't be any national restrictions that say parents can't enter early years settings at drop off and pick up – although the DFE know many settings prefer parents to pick children up without coming inside regardless of Covid.



Sector Guidance & Updates

For information, links to the published guidance are provided below:

Actions for Early Years & Childcare during Coronavirus

[Actions for early years and childcare providers during the coronavirus \(COVID-19\) outbreak - GOV.UK \(www.gov.uk\)](#)

[Actions for schools during the coronavirus outbreak - GOV.UK \(www.gov.uk\) www.gov.uk](#)

[Protective measures for holiday and after-school clubs, and other out-of-school settings during the coronavirus \(COVID-19\) outbreak - GOV.UK \(www.gov.uk\)](#)

[Coronavirus \(COVID-19\): financial support for education, early years and children's social care - GOV.UK \(www.gov.uk\)](#)

<https://www.gov.uk/government/publications/what-parents-and-carers-need-to-know-about-early-years-providers-schools-and-colleges-during-the-coronavirus-covid-19-outbreak/what-parents-need-to-know-about-early-years-providers-schools-and-colleges-during-covid-19>

New EYFS 2021

https://assets.publishing.service.gov.uk/government/uploads/system/uploads/attachment_data/file/974907/EYFS_framework_-_March_2021.pdf

Development Matters

https://assets.publishing.service.gov.uk/government/uploads/system/uploads/attachment_data/file/1004234/Development_Matters_Non-statutory_Curriculum_Guidance_Revised_July_2021.pdf

Ofsted Education Inspection Framework

https://assets.publishing.service.gov.uk/government/uploads/system/uploads/attachment_data/file/801429/Education_inspection_framework.pdf

Early Years Inspection Handbook

https://assets.publishing.service.gov.uk/government/uploads/system/uploads/attachment_data/file/828465/Early_years_inspection_handbook.pdf

<https://www.gov.uk/government/publications/what-parents-and-carers-need-to-know-about-early-years-providers-schools-and-colleges-during-the-coronavirus-covid-19-outbreak/what-parents-need-to-know-about-early-years-providers-schools-and-colleges-during-covid-19>

Vaccination News



South East London
Clinical Commissioning Group

[COVID-19 vaccine - South East London CCG \(selondonccg.nhs.uk\)](https://selondonccg.nhs.uk)

Our vaccination programme in numbers –

- ✔ 2,185,420 COVID vaccinations administered
- ✔ 1,305,150 people have received their first dose
- ✔ 880,270 people are now fully vaccinated
- ✔ 57 vaccination sites are operating across south-east London

[Book a coronavirus vaccination - NHS \(www.nhs.uk\)](https://www.nhs.uk)

[Who can get the coronavirus \(COVID-19\) vaccine - NHS \(www.nhs.uk\)](https://www.nhs.uk)



<https://youtu.be/8RLfmBffYXQ?list=PLIf07mb0qmAs2NhF9VT8IY2GOCohiOqSo>



<https://coronavirusresources.phe.gov.uk/covid-19-vaccine/resources/employer-toolkit/>

Key messages for employers to share with staff

- Join the millions already vaccinated.
- Vaccines are the way out of this pandemic. Vaccines are the best way to protect yourself and those around you from the virus.
- The Covid-19 vaccine has already saved thousands of lives by preventing the spread of the virus.
- All those aged 18 and over can book their vaccination through the NHS booking service. You can also call 119 free of charge or go to a local walk-in clinic.
- Vaccinated people are far less likely to get symptoms from Covid-19. They are even more unlikely to get seriously ill, be admitted to hospital or die from it. Vaccinated people are also less likely to pass the virus to others.
- The first dose of the vaccine offers good levels of protection, but to get maximum protection everyone must get a second dose, so we are urging all people to come back. Second doses have now been accelerated for all over 18s, by reducing the dosing interval from 12 weeks to 8 weeks. Book, or re-book, an existing appointment to make sure you get your second dose after 8 weeks.
- There are many resources available to people who have questions about the vaccine. The NHS urges everyone to be cautious of misinformation. Use trusted sources like **nhs.uk** to answer any questions.

For accurate information, visit <https://www.nhs.uk/conditions/coronavirus-covid-19/coronavirus-vaccination/coronavirus-vaccine/>



HM Government

NHS

Join the millions already vaccinated

If you're over 18, you can book your Covid-19 vaccine now at nhs.uk/CovidVaccination

EVERY VACCINATION GIVES US
HOPE

The poster features a stylized portrait of a woman's face composed of a grid of small dots in shades of purple and blue. The text is overlaid on the left side of the image.



HM Government

NHS

You need two doses for maximum protection.

Book your second dose of Covid-19 vaccine at nhs.uk/CovidVaccination when eligible.

EVERY VACCINATION GIVES US
HOPE

This poster is identical in design to the one above, featuring the same dot-matrix portrait of a woman's face and the NHS logo.

Here is where you can get resources to share with staff, parents and carers

<https://coronavirusresources.phe.gov.uk/covid-19-vaccine/resources/>



NHS

Women who are considering getting pregnant can safely receive the **COVID-19 vaccine**. Join the millions who have had the vaccine when it is offered to you.



NHS

Pregnant women can now have the **COVID-19 vaccine** when it is offered to them.

If you have any concerns, speak to a healthcare professional before you have the vaccination.



NHS

**COVID-19 VACCINE
FACT CHECK**

You can have the COVID-19 vaccine if you are breastfeeding.



Royal Greenwich Together
**HOLIDAY
FOOD and FUN**

**Your child may be eligible for
a free holiday club place!**

Fun activities and good food available throughout the school holidays.

Find out more at
[Royalgreenwich.gov.uk/HolidayFoodAndFun](https://www.royalgreenwich.gov.uk/HolidayFoodAndFun)

ROYAL borough of
GREENWICH

Holiday Food & Fun are funded free holiday club spaces for eligible children and young people.

If a child is aged between 4 and 16, and receives or is eligible for free school meals, they can claim a spot at one of our participating clubs.

Further information available here -

https://www.royalgreenwich.gov.uk/directory/95/holiday_food_and_fun_2021



Greenwich
Get Active

A great way to get active!

Download the app and get families, staff teams and individuals moving!

Street Tag

19 July - 20 September 2021



Street Tag turns the streets and parks of Greenwich into a giant virtual playground. Making physical activity a game, converting walking, running and cycling into Street Tag points.

When playing [Street Tag](#), you can record the distance you've walked, ran or cycled by scanning virtual tags with your smartphone at various geographic locations. You collect tags as you walk around your local area – more tags you get, the more points you get and the higher up the leader board you go. You can keep your phone or fob in your pocket/bag off line and it will automatically sync and gather the tags when open the app.

This scheme has been funded by Royal Greenwich.

By walking, scooting or cycling round your neighbourhood and visiting places, you can earn points. The top teams will win fantastic prizes including vouchers for sports equipment as you compete to be the most active team!

- ★ Download the free Street Tag app from the [Play Store](#) or [App Store](#). You can add up to two children to your app – there are also fobs available if you don't have a mobile phone in the family.
[Street Tag Walk and Earn Rewards - Apps on Google Play](#)
<https://apps.apple.com/gb/app/street-tag/id1331479079>
- ★ You can plot your route and collect and the tags will mostly be around parks and open spaces, cycling and walking routes
- ★ You can even add your own tags at every 150 metres part – on your own route to work, nursery or the shops. Nobody will know who made the tag!

For registration and any questions please contact Meenakshi at meenakshi@streettag.co.uk

**Play Street Tag
with family and
friends this
weekend.**

**Enjoy the great
outdoors and
collect points
whatever the
weather!**

**Greenwich
Get Active**

ROYAL borough of
GREENWICH



**What do you fancy
doing today?**

**A high energy run, a
leisurely cycle, or a
peaceful walk in the
park?**

**Why not try them all
to collect points and
win prizes with Street
Tag!**

**Download the Street Tag
app today!**

**Greenwich
Get Active**

ROYAL borough of
GREENWICH



[Find out more Street Tag](#)

Download the free Street Tag app from the [Play Store](#) or [App Store](#).



Public Health England

change 4 life



Better Health Let's do this

Shake up your summer!

Search '10 Minute Shake Up'.



[Disney Shake Up Games](#) | [10 Minute Shake Up](#) | [Change4Life \(www.nhs.uk\)](#)

The last year has been difficult. We've all been cooped up indoors and not able to be as active as we would like, especially our kids. So getting them moving and having fun again has never been more important.

Physical activity is associated with improved personal health, social, and academic outcomes. Kids need at least 60 minutes of physical activity a day for good health, wellbeing, and development. Breaking the hour down in 10-minute bursts is a great way to make this more manageable.

The 10 Minute Shake Up campaign will help kids to get active, build skills and grow in confidence, and most importantly, have fun!

The [10 Minute Shake Up website](#) has loads more games and ideas for getting active, as well as the 10 Minute Shake Up quiz

Order free pack here [10 Min Shake Up \(change4life.co.uk\)](#)

If you do need to contact the Health Visiting Service directly, please do get in touch on the details below:

Duty Line

Monday – Friday – 9.00am – 5.00pm

 020 8161 0530

 bromh.greenwich0to4admin@nhs.net

Professionals

 0208 161 0532

Please note that this line is currently open Monday-Friday 1.00-4.00pm



You can also find more information on their website

www.startwelltrust.org



Children's Centres & Timetables

Children's Centres | Start Well Trust

<https://startwelltrust.org/childrens-centres/>

Digital Offer by Greenwich Libraries

Wonderful storytelling and rhyme sharing

<https://www.facebook.com/pg/Greenwich-Libraries-375637446612900/videos/>





Department
for Education



Department
of Health &
Social Care

Policy paper

The national strategy for autistic children, young people and adults: 2021 to 2026

Updated 22 July 2021

<https://www.gov.uk/government/publications/national-strategy-for-autistic-children-young-people-and-adults-2021-to-2026/the-national-strategy-for-autistic-children-young-people-and-adults-2021-to-2026>

“For me, our goal must be nothing less than making sure autistic people from all backgrounds, ethnicities, genders, sexualities and ages – in all parts of the country – get the support they need to live full and happy lives.”

Sajid Javid MP, Secretary of State for Health and Social Care

4. Improving autistic children and young people’s access to education, and supporting positive transitions into adulthood

<https://www.gov.uk/government/publications/national-strategy-for-autistic-children-young-people-and-adults-2021-to-2026/the-national-strategy-for-autistic-children-young-people-and-adults-2021-to-2026#improving-autistic-children-and-young-peoples-access-to-education-and-supporting-positive-transitions-into-adulthood-1>

By 2026, we want the SEND system to enable autistic children and young people to access the right support, both within and outside of education settings. By the end of this strategy, we want transitions into adulthood to improve, so that more autistic young people are able to live well in their communities, find work or higher education opportunities. We want these improved transitions to result in fewer mental health crises and admissions into inpatient care.

We want education settings to provide better and more inclusive support to autistic children and young people so that autistic people are better able to achieve their potential. We want more teachers and educational staff to understand the specific needs of their autistic pupils, ensuring that more school placements can be sustained. We also want to demonstrate that more autistic children have had their needs identified early on and that they are having positive experiences in education settings.

Keeping Children Safe



 020 8921 4477

 safeguardingchildren@royalgreenwich.gov.uk

Contact Children's Services

Emergency Duty Team (out of office hours only): 020 8854 8888

Referral team: 020 8921 3172

Email: mash-referrals@royalgreenwich.gov.uk

LADO : 020 8921 3930 / childrens-LADO@royalgreenwich.gov.uk

Early Years & Childcare : 020 8921 3877 / childcare-support@royalgreenwich.gov.uk

Ofsted : 0300 123 4666 / enquiries@ofsted.gov.uk

DBS Regional Office : 0300 105 3081 / Kiranpreet.rehal@db.gov.uk

DBSRegionaloutreach@db.gov.uk