



Best of Royal Greenwich
Business Awards

2022 in association with 

CEREMONY BROCHURE

InterContinental London – The O2

7 October 2022

#GreenwichBizAwards

YOUR NAME IN LIGHTS!

Sparkle IN THE PARK 1-4 December

Don't miss your chance to be part of Sparkle in the Park, the Royal Borough of Greenwich's must-see Christmas light trail.

This year Christmas will be harder than ever for many families in the borough, so this free community event will make sure everyone can enjoy some festive cheer.

If your corporate goals include supporting and contributing to your local community, sponsoring all or part of the event is the ideal opportunity to show your commitment to building a better Royal Greenwich.

For a sponsorship pack or to discuss more opportunities, please contact:

Bolu Bamgbade
Tel: 07874 892 994
Email: Bolu.Bamgbade@royalgreenwich.gov.uk



GREENWICH SUPPORTS

We want to ensure that businesses in the Royal Borough of Greenwich have the help they need to tackle the rise of living costs. We have launched a cost-of-living survey to understand how businesses are being affected. Please take 10 minutes to complete the survey: royalgreenwich.gov.uk/business-cost-of-living



CONTENTS

Business foreword	3
Headline sponsor U+I	4
South East London	6
Chamber of Commerce	7
Meet the judges	7
Greenwich Access to Apprenticeship Fund	8
About the awards	9
Shop Local	10
University of Greenwich	11
Award categories	
<i>Best Food and Drink Venue</i>	14
<i>Best New Business</i>	15
<i>Digital</i>	16
<i>Greener Greenwich</i>	17
<i>Health and Wellbeing</i>	18
<i>High Street Retailer</i>	19
<i>Made in Greenwich</i>	20
<i>Market or Mobile Trader</i>	21
<i>Technology Innovation</i>	22
<i>Tourism and Culture</i>	23
<i>Workforce Development</i>	24
<i>Young Entrepreneur</i>	25
London Living Wage	26
Mayor's Charity Raffle	27
Awards Sponsors	28

AGENDA

12.30–13.15	Champagne reception (including canapés) in standing area
13.15–13.30	Speeches
13.30–14.30	Lunch
14.30–15.30	Awards Ceremony
15.30–15.40	Comfort break
15.40–15.50	Overall Winner
15.50–16:00	Mayor's Charity Raffle
16:00–16:10	Leader's close

GREENWICH MEANS BUSINESS



We had a fantastic response to our awards call-for-entries, with over 230 nominations and 9,900 votes in the public categories and, now, a very impressive shortlist. Every business on it has made extraordinary contributions to the borough.

As a council, we are proud of our business community, which plays a vital role in driving positive change and providing quality employment in the borough.

Royal Greenwich is a place of opportunity. We are now home to over 11,600 businesses employing 100,000 people, with plans to add an extra 21,000 jobs by 2028. The Elizabeth line opening at Abbey Wood and Woolwich has made us a better connected borough and given our businesses a wealth of valuable new opportunities.

We have launched the Shop Local campaign to encourage people from the area and beyond to make use of local businesses. This includes our re-designed discount Greenwich One Card and the newly launched Enjoy Local website, with Visit Greenwich, to attract people who live, work and study here into our local businesses.

We know that small businesses form the backbone of our economy and high streets, with approximately 90% of local businesses employing fewer than 10 people. With 275,000 residents, our ambition is for every individual and business to do well and to nurture a wide range of regional products, services and quality jobs. This means promoting local enterprise and start-ups, encouraging fair employment practices and ensuring that Royal Greenwich is attracting a diverse range of companies.

We want to foster a more inclusive and sustainable economy - a borough where everyone can thrive. Central to this is championing better pay in the borough through our work with the Living Wage Foundation. This is particularly important now, as we tackle the cost-of-living crisis.

Supporting our businesses has never been more crucial. We have a broad range of support on offer, from advice on training, networking, access to contract opportunities and an e-business support programme. Collaborating closely with our network of business support agencies is crucial to this. We're proud that several initiatives which started out as pilot projects in Royal Greenwich have been successfully implemented London-wide.

For more information about business support services, please visit: royalgreenwich.gov.uk/business

COUNCILLOR ANTHONY OKEREKE
LEADER OF THE ROYAL BOROUGH OF GREENWICH

FARADAY WORKS

An exemplar heritage-led scheme
in Charlton Riverside. Featuring new
homes, retail and employment spaces,
all wrapped in beautiful public realm.

Made Possible By The Power Of Partnership

U+i
UANDIPLC.COM



**SOUTH EAST
LONDON**
CHAMBER OF COMMERCE

SOUTH EAST LONDON CHAMBER OF COMMERCE

The South East London Chamber of Commerce (SELCC) – is in business, for business.

For over 133 years the Chamber has been supporting its members with practical support, networking opportunities, and access to new markets and services. This year, they're providing invaluable support and assistance for members who submitted entries to the business awards.

The Chamber's mission is to provide the best conditions for businesses to grow in South East London. The SELCC works with the boroughs of Royal Greenwich, Lewisham, Bromley, Bexley and Croydon on strategic issues such as transport, the environment, skills, employment, the economy and currently the cost of living. Alongside associations with local government, the Chamber receives support from their Strategic Partners, one of whom is the Royal Borough of Greenwich itself. Chamber Strategic Partners also include Berkeley Homes, Lewisham, Peabody, U+I, University of Greenwich, LSEC, Spurgeon's College, Mo-Sys Engineering, Alcatel Submarine Networks and Charlton Athletic FC.

"Strategic Partners use the Chamber as their conduit in supporting a healthy business community across South East London. The Chamber's elected board of directors ties the

organisation together. Directors are co-opted from different companies to create a board with diverse aims and priorities. Under the leadership of the board-elected president, Chamber directors use their varied operational expertise to work within their boroughs to defend member interests. Since lockdown, the Chamber has held some fantastic networking events, many with esteemed guest speakers from both business and political spheres. The Chamber holds many webinars, morning, lunchtime and evening events in popular venues to provide a comfortable environment for businesses to communicate for mutual profit. The Chamber's current mantra, What Gets Measured, Gets Done, is certainly fitting considering the organisation's role in determining the best businesses in the Royal Borough and the awards ceremony promises to be a great event for all."

THIS YEAR'S JUDGES



HEAD JUDGE

Cllr Denise Hyland
Interim Cabinet Member for Inclusive Economy,
Business and Skills

Denise has been a Member of the Royal Borough of Greenwich since 2006, elected the first ever woman Leader in 2014 and the Mayor of Royal Greenwich for 2021 to 2022. Denise has lived in the borough for 40 years and has raised her family here. She has a background in education and has worked as a youth worker, and community education manager. After finishing teaching full-time, Denise set up an education consultancy, working across London and Essex, and with her business partners produced curriculum materials and career guides for use in schools. Denise was also a BAFTA Judge on two occasions.



Sunita Bhuwanee
Business Support
Manager, Incubation,
Ravensbourne
University, London

Sunita provides 1-to-1 advice and training to support Ravensbourne University enterprising students, Start-ups and SMEs to facilitate commercial success of their ideas. She is actively involved in developing and consolidating collaborative links with Greenwich-based and London wide business agencies to contribute to the creative industry and the economy.



Bradley Hemmings,
MBE Founder Director,
FESTIVAL.ORG

FESTIVAL.ORG, one of the UK's leading outdoor arts producing organisations. Bradley has built the Greenwich+Docklands International Festival's reputation, while prioritising the commissioning of Black, culturally diverse and Deaf and disabled artists. In 2012 Bradley was Co-Artistic Director of the Opening Ceremony of the London 2012 Paralympic Games. In 2016 he was awarded an MBE for services to Culture and Disability Arts, and granted the Freedom of the Borough in 2017.



Barrie Kelly
CEO, Visit Greenwich

Barrie Kelly has been CEO of Visit Greenwich, the Destination Management Organisation that manages and promotes Royal Greenwich as a great place to visit, for eight years. In 2018 Visit Greenwich was awarded Destination Management Organisation of the year by UK Inbound and in 2019 received a record high 20m tourism visits. He is a Fellow of The Chartered Institute of Marketing and is a Board Director of SE London Chamber of Commerce. He has worked in senior marketing, commercial and development roles at a number of destinations across the UK, including Liverpool, Merseyside and Cheshire.



Carolina Correia
Head of Social Value,
Berkeley Homes

Carolina works with the communities around Berkeley's regenerations of Royal Arsenal Woolwich and Kidbrooke Village. Her role includes supporting micro businesses onsite, enabling markets and pop-ups and creating exciting events for the whole community.

Have you considered hiring an apprentice?



Hiring an apprentice is an effective way to grow talent and develop a motivated, skilled and qualified workforce. With the Council's Greenwich Access to Apprenticeships Fund you may be eligible for 100% funding to pay for the cost of training and assessments for an apprentice.

The Council launched the Greenwich Access to Apprenticeships Fund in September 2020, to help create more apprenticeship opportunities and upskill existing staff. Micro and small businesses, charities, third sector organisations and social enterprises in the borough can potentially benefit from this funding.

Greenwich Local Labour and Business (GLLaB) can support you to promote opportunities, identify eligible residents, relevant standards, and training providers, and to navigate the Digital Apprenticeship Service (DAS) portal.

To find out more and check if your business is eligible, get in touch with GLLaB at:

**apprenticeships@
royalgreenwich.gov.uk**
0208 921 2440



GLLaB
Greenwich Local
Labour and Business



**LONDON
SOUTH EAST
COLLEGES**

ROYAL borough of
GREENWICH



ABOUT THE AWARDS



BUSINESS OF THE YEAR AWARD

This Business of the Year Award 2022 is the grand finale of our event and will be the last to be presented. The prize, kindly sponsored by Wilmott Dixon, will present the winner with a £3,000 cheque to spend on a marketing project of their choice to promote their business.



WILLMOTT DIXON
SINCE 1852

Wilmott Dixon is a privately-owned contracting and interior fit-out group. We have a purpose beyond profit to leave a positive legacy in our communities and build brilliant buildings for our customers. We love to support the communities we work in and sponsoring the Best Business of the Year Award 2022 is a great way to celebrate the achievements of the local area. willmottdixon.co.uk

OUR HOST

This year's celebration will be hosted by none other than Tim Campbell MBE, celebrity businessman and the BBC's The Apprentice star. Tim is a young employment ambassador who has dedicated his life to helping others achieve their dreams, with a focus on education, empowerment and entrepreneurship.

OUR VENUE

The InterContinental London – The O2 is perfectly positioned on the edge of the Greenwich Peninsula with the River Thames and Canary Wharf on its doorstep. Surrounded by the rich history of Royal Greenwich, the hotel boasts spacious bedrooms and suites, a 4,500 sqm purpose-built conference centre, including the UK's largest pillar-free ballroom, complemented with a further 19 flexible spaces, both indoor and outdoor social spaces, providing the perfect canvas for your event. Plus, enjoy a vibrant mix of restaurants and bars, each featuring spectacular views and offerings inspired by the area's rich history. iclondon-theo2.com

Shop LOCAL

#ShopLocalRBG



Shop Local: Time Well Spent

Spending locally has a huge impact, not just for your individual business, but also to reinvigorate the wider community. The Royal Borough of Greenwich's Shop Local: Time Well Spent campaign aims to help our high streets bounce back by encouraging people from the area and beyond to spend time at local shops, restaurants, cafes, and markets. The campaign is targeting residents and local workers and students through social media, magazines, e-newsletters, blog posts and press activity. You will also spot 'Shop Local' signage around our town centres, including branded banners, shop window stickers, tote bags and other promotional items inspired by the exciting and vibrant character of local businesses in the area.

Find out more: royalgreenwich.gov.uk/shoplocalrbg

Enjoy Local wherever you are in the borough

The newly launched Enjoy Local website is brought to you with Visit Greenwich to help local people enjoy the very best of Royal Greenwich - from shopping and eating healthy to culture and relaxation. The website features local businesses, helping to promote them to local people, and supports the new and re-booted One Card. The website is designed to be hyper local - it knows your location and gives you great ideas of things to do nearby, wherever you are in the borough.

Start exploring: enjoyroyalgreenwich.org.uk

Join the conversation [#ShopLocalRBG](https://twitter.com/ShopLocalRBG)
[#EnjoyLocalRBG](https://twitter.com/EnjoyLocalRBG)

Please email business@royalgreenwich.gov.uk if you have any questions



DISCOUNTS
IN STORES

GREENWICH ONE CARD

Share special offers with people who live, work and study locally by signing it up to the Greenwich One Card. You can even promote time-limited offers to make the best of increased footfall from residents and visitors during seasonal holidays and large events.

Businesses that sign up to the scheme will receive free promotion through our website and social media. Sign up at: royalgreenwich.gov.uk/OneCard

Save the Date

October 20th 2022



The University of Greenwich are pleased to host a series of events around being green.

October 20th is when businesses in the Royal Borough will come together to share their stories and get new ideas around being green and sustainability. The event will be held both online and in-person.

During the second half of 2022, other events will be held for residents to explore easy ways to contribute towards the green agenda whether as an individual or a household.

Join us as we learn and demystify the journey to net zero.

For more information and to register your interest, please email enterprise@greenwich.ac.uk





At Peabody we are working alongside our partners to support residents and businesses across London. We help them reach their full potential and access a range of opportunities available to them.

We offer one-to-one information, advice and guidance sessions which help people find work, get better jobs or start training courses. We deliver sessions that allow local people to learn about the growth sectors and routes into them. We also help employers and partners with recruitment by sharing opportunities with our internal recruitment team, community networks and strategic partners.

Made In Thamesmead is our enterprise programme for local people which was created to celebrate entrepreneurship and showcase local talent. The programme supports the local business community with the training and support they need to be successful. Many businesses also take part in Peabody's South London Business Forum. Sessions are held online every month, along with a quarterly in-person forum.

To find out more about our employment, apprenticeship and training opportunities and how we can help with your recruitment, please contact employment.training@peabody.org.uk

To sign-up for the South London Business Forum and enterprise opportunities, please contact businessready@peabody.org.uk

THAMESMEAD™



THESE ARE THE FINALISTS

 **WOOLWICH WORKS**

'Best new culture spot' in London
Time Out

Find out more at:
WWW.WOOLWICH.WORKS

The Fireworks Factory, 11 No. 1 Street, London SE18 6HD | +4420 8035 8835

BEST NEW BUSINESS

Sponsored by

Berkeley
Designed for life

berkeleygroup.co.uk

Berkeley is delighted to sponsor the Best New Business Award this year. Supporting new entrepreneurs in the Borough is crucial to creating successful places for our communities, and Berkeley is committed to working with businesses of all sizes to enable the growth and development in our local area.

CAMP ELITE

A holiday camp offering children aged 5-12 the opportunity to learn and participate in programmes which would not normally be accessible within the school curriculum. We offer children of all abilities the opportunity to take part in multi-sports, Taekwondo, drama, Spanish, cookery, 11+ preparation and arts & crafts sessions. Each small group is accompanied by one instructor and one apprentice from our apprentice programme. All staff are emergency first aid trained. Our mission at Camp Elite is to instil a 'can do' attitude in all our campers. campelite.co.uk

LAGGERS COFFEE ROASTERS

A modern coffee company created by two childhood friends, David and James, with a shared passion for great coffee. With family ties to Colombia, we specialise entirely on sourcing and roasting speciality grade Colombian coffee. As a new business we wanted to make sure our social and environmental practices were correct from the start. We work with producers and exporters to pay a rate that is mutually agreed upon and well above fair trade value. Making sure all our packaging is recyclable and carbon neutral is also important to us. lagerscoffee.com

MADRE PINZERIA ITALIANA

A family business, originated in Calabria in southern Italy. The family work together to share their mother's original pinze - specific to her recipe - reflected in the restaurant's name, 'Madre' ('mother'). The pinze base is homemade, prepared every day with four different types of flour, which makes it lighter and healthier. Desserts are homemade from original recipes. Our front of house team creates a welcoming, professional, and friendly environment for customers. pinzeria.co.uk

MELODIC DECODER

A fun, innovative approach to teaching children music theory. The resources include music theory activity books, mission-based activity sheets, printable board games and free bitesize explainer videos. Our online shop has inspired interest in the UK and as far afield as the US and Australia. We have received positive reviews from prominent music educators in the UK. The first six months of this year have seen a ten-fold increase in sales of our products. melodicdecoder.co.uk

STEP UP YOUTH

A Black female-led skills, training and development social enterprise. We offer young people opportunities in education, employment, enterprise, volunteering, and community-impact projects. We equip them with skills, tools and values for personal and professional growth. In the last 12 months we successfully delivered a funded employability programme called 'Bridge-the-Gap', to help 16-24 year-old 'at-risk' minority-youths with complex-needs to access employment, apprenticeships, and further education. Our participants fulfilled their goals, and the programme has been so popular we now have a waiting-list for future enrolments. stepupyouth.org.uk/bridgethegap

THE GREENWICH COLLECTIVE

We create high quality, unique, bespoke ready-to-wear clothing and accessories along with a gallery of modern art, formal wear hire, clothing alterations and shoe repairs. Caring passionately about craft and history, while operating in the modern realm, we are lifting the standard of retail in central historic Greenwich without losing sight of what made Royal Greenwich the fashionable and exciting place it has historically been.

BEST FOOD AND DRINK VENUE

Sponsored by

DRURY
TEA & COFFEE

drurycoffee.com

Established in 1936, and still a family-run business, Drury Tea & Coffee supplies freshly roasted coffee and quality teas to the food service industry and to consumers. We have a diverse portfolio of products, with a fifty-plus range of coffees, over 120 teas, and a selection of 30 pyramid tea bags.

BROTHERS BAKERY

Brothers Bakery is owned and operated by two brothers, Kazim and Erol. We are second generation Kurdish, proud to offer top quality food and drink along with exceptional hospitality to every customer. Our shop offers the best coffee and snacks for both dine in and take away. We are an independent shop with a focus on detail and providing satisfaction to all that visit our bakery. [facebook.com/BrothersBakery.Blackheath](https://www.facebook.com/BrothersBakery.Blackheath)

COPPER & INK

We're a relaxed fine dining restaurant run by two local residents. Focused on offering the local area the best quality food and drink, but at affordable prices and in a relaxed setting, we change our menu monthly and work with local suppliers such as Ellis and Jones Fishmongers and John Charles Butchers. copperandink.com

HEAP'S SAUSAGE CAFÉ

Heap's is a Deli café in the heart of Greenwich which makes and supplies homemade gourmet sausages. Vincenzo Carbonara together with Martin Heap, his partner in all things gastronomy, are the chief ingredients behind the enduring success of Heap's. In our shop, we offer around 15 types of sausages along with Italian Deli products. As a small independent business, we have a real sense of connection to those who come through our doors, welcoming them with a smile. heapssausages.com

INTERCONTINENTAL LONDON – THE O2

The InterContinental London – The O2 is perfectly positioned on the edge of the Greenwich Peninsula with the River Thames and Canary Wharf on its doorstep. Surrounded by the rich history of Royal Greenwich, the hotel boasts spacious bedrooms and suites, a 4,500 sqm purpose-built conference

centre, including the UK's largest pillar-free ballroom, complemented with a further 19 flexible spaces, both indoor and outdoor social spaces, providing the perfect canvas for your event. Plus, enjoy a vibrant mix of restaurants and bars, each featuring spectacular views and offerings inspired by the area's rich history.

iclondon-theo2.com

RIVER GARDENS CAFÉ

A family run community café and restaurant in East Greenwich, formally known as Lovell's Wharf. It is important to us to try and preserve the history of the area by collecting and displaying old pictures and memorabilia to remember what was once a bustling area importing copper and granite. We have a strong relationship with residents, coming together to hold events to fundraise for local charities while serving the people of Greenwich 7 days a week.

rivergardenscafe.co.uk

THE OLD COTTAGE COFFEE SHOP

A friendly café in Charlton Park with a focus on supporting our customers' wellbeing. Our menu was developed to offer nutritional, healthy, tasty take-away foods and drinks for everyone, including dogs. We source locally as much as possible, including small and local bakers and coffee and tea suppliers. We have always catered for the elderly on Christmas Day, organising the delivery of take-away bags, one with their Christmas dinner and another overflowing with Christmas goodies, donated by customers and local businesses and delivered by a team of volunteers.

DIGITAL

Sponsored by



dgcities.com

DG Cities works with public and private sector organisations to help cities and communities harness the potential of technology to improve people's lives – we are proud to sponsor an award that recognises the Greenwich companies showing leadership in using digital technologies to improve the way they work and their online services.

COMPASS SUPPORTED LIVING AND DOMICILIARY CARE

A care agency specialised is providing support and care for adults aged 18+ with learning disabilities, particularly those who are regarded as having challenging behaviour. Our focus has always been to not simply support with their daily living activities but also to have an opportunity to engage with activities that are of interest in their own communities. We take data protection very seriously and believe in doing our part to reduce our carbon footprint by investing heavily in online systems **compass-supported-living.co.uk**

JRVISUALS

A video production company co-founded by Jose Prada and Rene Strgar, two award-winning filmmakers who merged their creative minds to produce unique video, photography, and social media content. We have worked with brands such as Ford, L'Oréal, Red Bull, Zara, NHS, Fourpure Brewery, Sambrook's Brewery, Tefal, Eating Europe, Italcream Coffee, Neverland Festival among others. We love using social media platforms to tell our clients' stories, which adds the extra value to a product. **JRVISUALS.co.uk**

MATTER

In 2017 Christina Hsieh, originally from Taiwan, established MATTER, the women-led structural engineering practice, in Greenwich. Working on projects in Greenwich and nearby, we have been giving back to the local community and promoting structural engineering excellence in an open, approachable way. Our work includes new builds and refurbishing existing buildings, as well as charity projects wherever possible. One of our successes is with the Cody Dock community in Canning Town, where we have designed the visitor centre and washing block. **wearematter.uk**

METAHUB

At MetaHub, we design, develop and deploy Metaverse architecture, Virtual Reality events and conferences. We utilise the latest innovative visualisation technology to craft Virtual Reality environments to immerse people in a custom metaverse meeting hub and create captivating metaverse events and conferences. I am a social entrepreneur, workshop facilitator, Metaverse advisor and digital economic justice campaigner. What motivates me is designing, developing and delivering meaningful interventions that also have a social impact. **metahub.uk**

PLUM INNOVATIONS

Our vision is to assist teachers succeeding in their professional fields with an efficient IT platform and stress-free IT experience. With deep industry expertise, we are passionate about taking on technical challenges and can address problems swiftly with efficient solutions. We deliver top class services and support through user friendly and cutting-edge technology with cost-effective solutions. We continually strive to better our services by employing innovative solutions and partnering with top organisations to meet the growing and changing needs from our schools and teachers. **pluminnovations.co.uk**

THE SOCIAL MATRIX

We provide digital marketing services to a diverse range of businesses, from locksmiths and printers to mental health charities and care providers. We write content, manage social media accounts and build websites. We have also provided training since 2014 to local businesses, by working with South East Enterprise. We have an all female management team who are highly regarded as credible and trustworthy in the borough. We pride ourselves on our customer service, keeping in regular contact with our clients. **socialmatrix.co.uk**

GREENER GREENWICH

Sponsored by



ikea.com/gb/en/

IKEA's vision is to create a better everyday life for many people. IKEA Greenwich opened in February 2019 and has its clear ambition to become the leading sustainable store from the start. The building sustainable construction was certified by BREEAM as Outstanding, the highest rating ever achieved for an IKEA store globally. We're committed to show the world that sustainability is good business.

ART OF ZERO LIVING

Waste is a massive issue not only in faraway landfill – plastic rubbish and unethical products are all around us polluting our communities. We offer superior products at competitive prices to encourage people to reduce single-use plastic. Bring your own containers to reuse them again and again, filling them up with sustainable, fairtrade and eco-friendly products. Our refill shop operates with the principles of the circular economy: we reuse and recycle our materials, sending the least possible waste to landfill. **artofzeroliving.uk**

BESBIKE

Besbike was founded to change modern cities and people's lives for the better by introducing electric bikes. We offer services to transform conventional bikes into an E-bike (we convert scooters, skateboard, and motorbikes as well). We sell electric bike conversion kits and custom batteries -E-scooter, E-bike and E-motor bike service and repair. We offer different options in budget, range, power, and style to suit our customers. 4.8 out of 5 on Google reviews and 100% customer satisfaction on eBay are proof of our fantastic customer service. **besbike.co.uk**

ELAN SKINCARE

Elan Skincare is an award-winning, high-performing, natural, and vegan skincare brand made in Royal Greenwich, founded by Joanna Silva. Elan Skincare's philosophy is to take a natural and science-based approach that cares for healthy and beautiful skin from head to toe. As a result, the products we've created have earned us multiple industry awards and a strong and loyal customer base. We have ambitions to become a household name, a world-renowned brand, much like Jo Malone or Lush. **elanskincare.co.uk**

ELECTRICAL AND MECHANICAL SERVICES (UK)

Established in 1992, EMS (UK) has grown to become one of the market leaders in Temporary Site Services for UK construction sites. Having worked on many projects over the years such as at the Millennium Dome, The O2, The Woolwich Civic Offices, Belmarsh Prison and The Royal Artillery Barracks, we are constantly looking at ways to innovate and improve. We are a family run business celebrating our 30th Anniversary that has employed local labour through GLLAB and JTL over the years. **emsuk.net**

GREENERA ENTERPRISE

We are the enterprise with an ambition to completely remove plastic. Our product range includes carrier bags, bin liners and much more. The ideal solution to remove plastic should be quick, with no environmental impacts and zero tracing. Our product has all three characteristics as these products can be dissolved in water. This has been recognised as the quickest way to prevent landfilling or any negative environmental impact and has passed human, animal and marine toxicity tests. **greeneraenterprise.co.uk**

THE WOODLAND NURSERY

The Woodland Nursery is an outdoor nursery for 2 to 5 year olds based on the Forest School approach. We believe in the Forest School ethos that the closer to nature children are, the happier they will be, making them more likely to learn. Our Forest School nurseries have recently been judged as 'Outstanding' by Ofsted who was impressed by the unique outdoor experience, well-rounded education, and bucketful of messy fun that the children at our settings engage in daily. **thewoodlandnursery.co.uk**

HEALTH AND WELLBEING

Sponsored by



better.org.uk

At the heart of the Royal Greenwich community since 1993, Greenwich Leisure (GLL) is a charitable social enterprise operating under the Better brand, delivering leisure, health and community services across the UK. Our not-for-profit business model allows us to reinvest our surplus back into our facilities and the communities we serve.

FOR EYES OPTICIANS

Opened 5 years ago by Ketan Mistry, Optometrist and Owner with 24 years' experience, who identified a scarcity of high standard personal care in the industry and decided to remedy that himself. Providing in-depth eye exams including domiciliary visits and offering a wide range of products, everyone is catered for at For Eyes. Over the past 12 months, while navigating pandemic regulations, Brexit uncertainty, and the turbulent financial climate For Eyes held two major brand events giving back to the local community. foreyesoptician.com

GREENWICH DANCE

Established in 1993, Greenwich Dance provides both non-professionals and professionals opportunities to make, watch and take part in dance regardless of age, experience, or background, within a wide range of activities including classes, performance projects, festivals, and events. This spring marked a new chapter in our history, moving to a state-of-the-art building at The Nest in Thamesmead, becoming part of a vibrant creative hub. We delivered dance experiences at events like Summer in the Park, Park Picnics and our weekly dance classes and innovative online platform ArtsUnboxed. greenwichdance.org.uk

HELP SAVE LIVES

As well as supplying life saving devices, we train 4-11 year olds in schools in First Aid including CPR and how to use a defibrillator. Over the last three years alone we have trained over 30,000 children. This means that we are creating a generation of potential life savers within our aging community. Since 2020 we were able to provide 10 defibrillators to 8 schools in Royal Greenwich, who were unable to afford to buy their own, sponsored through local businesses. helpsavelives.co.uk

HOME-START GREENWICH

A registered charity established in 1993 to provide in-home early intervention and support to vulnerable families with young children. Our universal support and targeted pathways empower families to deal with the challenges they face to give children the secure and nurturing home environment they need to thrive, especially in the crucial first 1001 days. The frontline team includes a network of trained community volunteers with specialist skills and lived experience. Our work impacts the demand for statutory support services reducing the need for costly, crisis interventions. homestartgreenwich.org.uk

MUMSAID

A multi-award-winning charity that provides life-changing support to pregnant women, and new mums experiencing a broad spectrum of mental health difficulties. An external evaluation demonstrated our effectiveness in reducing MH symptoms, (85% of clients moved below the depression threshold), and in improving mothers' confidence and bonding with their babies. It also highlighted we reach mothers who might not engage with statutory support services: 56% of women who received counselling were from Black and minority ethnic groups with many aged under 21. mums-aid.org

PARENT POWER

Providing Parenting Educational Services to support families in Greenwich. We focus on parental wellbeing, including providing volunteering and employability opportunities. We also focus on, Mental Health and Wellbeing, supporting learning and character education at home, promoting positive parent child relationships and behaviour in children. We deliver our workshops physically and virtually. Through our work, in the last two years we have reached over 200 families, improving lifestyle choices, the parent-child relationships, youth empowerment, parent volunteering and employability skills training. parentpower-ed.co.uk

HIGH STREET RETAILER

Sponsored by



hindwoods.co.uk

Founded in Greenwich in 1886, Hindwoods is a leading firm of chartered surveyors and property experts providing various commercial and residential property services. With offices in Greenwich and Croydon, we are there to support your business whatever its property needs.

BEN OAKLEY GALLERY

Established in 2010 by ex Greenwich Market Stall holder, artist Ben Oakley, as a springboard for emerging artists. The Ben Oakley Gallery has worked with all the Major London Art Schools offering end of year shows plus advising them about the business and employing them for work experience. We hold monthly exhibitions, a free open evening for locals & our data base with the artists in attendance. We sell original artworks, sculpture and prints and a framing & personal hanging service. benoakleygallery.com

FIFI'S DOG HAUS

A dog boutique, offering quality products for dogs and dog grooming services. The treats we sell are 100% natural. We try to support other small businesses, only stocking independent brands of dog accessories, two of them handmade. We offer a one to one service for dog grooming so the dogs are relaxed and have a luxury service. We tailor each appointment according the customers' needs, for example if the dog needs extra support due to a medical issue. facebook.com/Fifisdoghaus

GLASSES LAB OPTICIANS

Founded in 2014 by James and Dimple after working in the optical industry for more than 20 years. They had perfected their crafts as a qualified Optometrist and lab technician, but something was missing. All too often, customers were disappointed with the limited range of styles, lack of comfort, and overpriced glasses from mainstream brands. They set out to create a brand committed to creativity and innovation, also creating their own sustainable eyewear brand, Cubo, sold in store and online. glasseslab.co.uk

THE FUDGE PATCH

The Fudge Patch is a simple idea. We make the best fudge there is and nothing else. Owned by Patch Hyde who has now been making fudge for 25 years. He has instilled his passion for perfect fudge into all the staff who make everything onsite in our shop in Greenwich Market allowing anyone to pop in and watch the 200 year old hand made process. Our fudge is vegan, gluten and soya free. thefudgepatch.co.uk

THE VOEWOOD

A unique lifestyle concept boutique with womenswear, beauty, homeware, interiors, cards and gifts. I founded the store on the principal of stocking products that I genuinely would love to have myself and to bring joy to others. We're an active part of the community and have run workshops, from fashion styling to macrame making, furniture recycling and interior design and mind-map workshops to empower individuals to make positive life changes. We focus on ethical sourcing and have worked with local artists and artisans. thevoewood.com

TRANSGLOBAL AVIATION

The company's primary goal is to provide high-quality travel services to both business and leisure travellers locally in Royal Borough of Greenwich and nationally. The agency continues to expand and diversify its interests to become one of the travel industry's leaders in the Royal Borough of Greenwich. Transglobal Plumstead – Travel Agent has expanded to cover various aspects of the industry, thanks to strong financial management, impressive customer satisfaction, and constant improvement. facebook.com/tranglobal.plumstead

MADE IN GREENWICH

Sponsored by



grantsaw.com

A leading firm of solicitors based in South-East London with offices in Greenwich and Blackheath. We provide a range of legal services for individuals and businesses including conveyancing, Wills and probate, corporate and commercial legal services, dispute resolution, divorce and separation and employment services.

AMABEL ILLUSTRATIONS

A local business by artist Amabel Barlow, responding to art commissions, selling affordable original artwork and taking part in local exhibitions. I paint in oils and watercolour inspired by my local environment and nature. I sell greeting cards and prints from my original paintings at local market stalls, my on-line shop, Made in Greenwich, and Sevedroog castle gift shop. amabelbarlow.online

BPTW

BPTW brings together specialisms in architecture, urban design and planning to transform physical spaces and people's lives. Working throughout London, and across the South-East and beyond, our commitment to designing beautiful places for people is seen in projects from Rochester Riverside, a sustainable 1,400 home development which was awarded the 'Winner of Winners' and the 'Building for a Healthy Life' at the prestigious Housing Design Awards, to a string of developments along Creek Road and Norman Road, Greenwich. bptw.co.uk

CHAMPION 3D

We are a small 3D printing and 3D design business based in North Greenwich. Founded in 2016 by Josef Dunne, a Greenwich native, we've grown gradually and are now proud to be part of the new Design District on the Greenwich Peninsula. We have worked on projects in architecture, gaming, art, engineering, as well as helping people and businesses bring their ideas to life from sketches and drawings. We consciously use sustainable and biodegradable materials and 3D printing technologies. champion3d.com

DART FLYSCREENS

Dart Flyscreens is a global micro-business designing, manufacturing and distributing small motorcycle windshields. It has grown from an idea conceived in the kitchen of the founder into a globally recognised business with a revenue of £1M a year. All products are designed here in Greenwich, all components are sourced in the UK, and everything is packed and despatched from our office. Online since day one, we export about 80% of our products, both to trade and directly to customers all over the world. dartflyscreens.co.uk

FAN THE GLORY WITH TORI

Fan the Glory with Tori was founded by me, Victoria Ajoku in 2019. I have lived in Greenwich all my life and am currently the sole trader of this very small, unique business, created from my love for the history, beauty, and practicality of fans, combined with the fact that the craft is officially listed by the Heritage Craft Association as 'Critically Endangered'. Fan The Glory With Tori provides bespoke handmade fan related fashion accessories through the online boutique, markets and at festivals as well as teaches the craft of fan making. fantheglorywithtori.com

GREENWICH THEATRE

Located on the site of the original Victorian music hall, Greenwich Theatre was saved from destruction in 1969. Greenwich Council bought the building and together we raised the money to rebuild and reopen a community theatre. Over the last 53 years it has offered early career opportunities to thousands of young actors, writers and creative people, including Colin Firth and Rupert Everett. We present a varied programme of new writing, classic drama, family theatre, musicals, comedy, student productions and our award-winning pantomime. greenwichtheatre.org.uk

MARKET OR MOBILE TRADER

Sponsored by



londoncityairport.com

We are London's most central airport and known internationally for our punctuality, speed of service and our award-winning customer experience. In 2022 LCY was named as the UK's Best Airport by the Daily Telegraph and in the same year announced plans to be the first London airport to achieve net zero carbon emissions by 2030.

BONNIE & ROSE BAR

A local VW campervan bar bringing smiles, energy, feel good vibes and amazing drinks to lots of public events around Royal Greenwich. We started our journey at the Royal Arsenal Farmers' Market, where I have many returning customers. I sell cocktails and mocktails, frozen cocktails and mulled wine and hot gin at Christmas. I am always being told at the Greenwich Summer Nights' market that I offer the cheapest and best quality drinks around. bonnieandroseevents.com

EVENTS MEETS WORLD

Event Meets World manages Yeti's Kitchen, a family run business with a contemporary approach to authentic Nigerian cuisine. The business prides themselves on providing fresh food, ensuring quality every time. Our aim is to provide quality Nigerian food catered to a wide range of events, to be visible in local areas that don't have Nigerian cuisine and to educate about the cultural heritage and history of the country. eventsmeetsworld.co.uk

HIMALAYAN TIFFIN

I started my food business like many other stay-at-home mothers, when I realised I could offer my own variations to our everyday dishes, offering a healthier, nutritious meal at an affordable price, freshly cooked on the day. I also shop locally and use mostly fresh ingredients and healthier oils such as olive oils and free range products, with low salt and no preservatives. I believe in cooking from scratch and don't compromise by using frozen, ready-made sauces or processed food. facebook.com/people/Himalayan-Tiffin

JOY'S CARIBBEAN FUSION

Joy's Caribbean Fusion is a zero waste food company. We specialise in plant-based cuisine and all our dishes are vegan with a twist of Caribbean spices. We buy our ingredients locally and we try to always think about the environment by reusing every part of the food to create tasty dishes such as our bestseller, banana skin curry. We are a plastic-free company, and we only use biodegradable plates to serve our food. We are also signed up to the Good Food in Greenwich Charter. facebook.com/vegan.street.food.caribbean

NAMASTE ON THE WHEEL

Namaste On the Wheel was the first Food Stall to start in Beresford Square Market. Our aim was to introduce Nepalese street food in the streets of London. Our journey was not smooth as most of the locals didn't know much about Nepalese food back then. After lot of hard work and perseverance we succeeded in our goal and now most of the people around Woolwich knows what MoMos, one of our star dishes, are. We feel proud when customers come asking for our MoMos.

ROON'S CATERING

Offering authentic Somalian cuisine and fast food freshly made, prepared, and cooked every morning and made with love. Based in the heart of Woolwich, Beresford Square, you can enjoy a slice of delicious Somalian food that will leave your tummy blessed and your taste buds caressed. We treat each customer as if it were their first Somalian food experience, discussing the pronunciation, ingredients and serving methods for optimal enjoyment. [twitter.com/ RoonsCatering](https://twitter.com/RoonsCatering)

TECHNOLOGY INNOVATION

Sponsored by



ASN

ASN would like to convey our passion for quality, reliability, and innovation to other businesses in the Royal Borough of Greenwich. We have a long-standing history of making market leading achievements that have shaped the modern world of technology and communication. We are proud sponsors of the Technology Innovation Award.

AEGUANA

Aeguana's on a mission to create automated retail experiences that consumers love, to engage with brands in new and innovative ways, from interactive product sampling to buying products from a digital vending machine. Our equipment is used all over the world, for example, serving meals to NHS workers and dispensing hundreds of HIV self-test kits in places of need. aeguana.com

CHAMPION 3D

We are a small 3D printing and 3D design business. Founded in 2016 by Josef Dunne, a Greenwich native, we've grown gradually and are part of the new Design District on Greenwich Peninsula. We have worked on projects in architecture, gaming, art, engineering, as well as helping businesses bring their ideas to life from sketches and drawings. We use sustainable and biodegradable materials and 3D printing technologies. champion3d.com

FIRST STEP TRUST

Providing work experience and employment for people with severe and enduring mental health problems and other disadvantages. We run courses to develop self-confidence and competence in customer service, finance, administration and at a social enterprise garage. The garage provides on the job training, work placements and a new 10 module Motor Vehicle Technician training programme. We have developed a Virtual Reality training programme, making it easier for participants to replicate the process of, for example, replacing a worn tyre in the real garage. firststeptrust.co.uk

LP NETWORKS

Established in 2004, by Director Lee Pepper, the business is an outsourced IT Services and Cyber Security provider. We strive to offer an extremely high level of service, which allows them to focus on what they do best. Throughout the toughest two years we have continued to invest, adapt, and stay at the forefront of technology to ensure we are able to deliver the high quality of both security advice and support service. lpnetworks.com

MCG UK

A blockchain-driven company whose mission is to build the blockchain-powered supply chain traceability and carbon visibility. To achieve the vision, our platform VUILA captures the journey of the products from manufacturer to the individuals. MCG PI-enabled Smart and Modular Container System LIUC reshapes the logistics distribution in sustainably. MCG envisages an infrastructure network to bridge different blockchains across the supply chain stakeholders (E2E). vuila.ca

SOMEDAY DESIGNS

An independent online store selling thoughtfully designed sofas, furniture, lighting and homewares. We collaborate with established designers whilst also supporting new and emerging artists - offering customers access to pieces which are not widely available elsewhere. Customers return to see what other industry 'secrets' they may discover. We are proud to be a retailer and maker with our own in-house collection. somedaydesigns.co.uk

TOURISM AND CULTURE

Sponsored by



Peabody.org.uk

Peabody is one of the oldest and most well-known not-for-profit housing associations in the UK. We're committed to providing great homes and neighbourhoods and making a positive difference to communities. We're pleased to support the Tourism and Culture award, celebrating businesses working to provide welcoming places and excellent experiences for all.

BOPPIN' BUNNIES

I launched Boppin' Bunnies having had a career in music. When I had my own family, I combined my knowledge with my passion. I wanted to provide the young children of Greenwich with high quality music shows and classes, taught and performed by live local musicians with real instruments, making it fun and educational. In the past 12 months we've provided under 5s with Weekly Music Classes led by local musicians and music shows at festivals, theatres and iconic locations in Royal Greenwich. boppinbunnies.co.uk

CITIZENS OF THE WORLD CHOIR

In 2017, Lord Roger Roberts of Llandudno dreamt of a choir that would open its arms to the refugee community in the UK. Since, we've evolved from a volunteer-led project to an organisation proud to call itself the UK's leading refugee choir, featured by some of 2022's biggest cultural events, including on the mainstage at Glastonbury and the Jubilee Party at Buckingham Palace with rock legends Elbow. We advocate for understanding, dignity and kindness through the transformative impact of music. citizensoftheworldchoir.org

INTERCONTINENTAL LONDON
- THE O2

A family-owned hotel offering residents and international travellers the chance to experience a global hospitality brand positioned in an iconic location. The business has been a key contributor towards putting Greenwich on the map as a unique tourist destination and a place where local residents can relax and indulge in luxury hospitality. Our guest experience has been enriched through local recruitment initiatives whereby our team members can work as natural ambassadors of the InterContinental brand and the borough. iclondon-theo2.com

PUNCHDRUNK

Formed in the UK by Felix Barrett in 2000, Punchdrunk's game-changing form of immersive theatre allows roaming audiences to experience epic and emotional storytelling inside sensory theatrical worlds. In 2021, Punchdrunk became part of Woolwich Works, part of the Royal Borough of Greenwich project to establish a creative district at the historic Royal Arsenal site. In March 2022 Punchdrunk opened The Burnt City, an epic reworking of the greatest Greek tragedies, set across 100,00 sq. ft. of Grade II Listed Buildings. punchdrunk.com

SELLADOOR WORLDWIDE

A renowned UK theatre producer, founded in 2009 in Greenwich, Selladoor Worldwide has produced iconic shows such as Footloose, 9 to 5 The Musical, Jersey Boys, The Producers, Avenue Q, and Of Mice And Men; touring regionally across mid- and large-scale theatres, in addition to West End runs and international touring covering four continents. The company has gone through considerable change in the past two years, focusing on producing first class musicals with an international ambition. selladoor.com

TRIBE URBAN ENTERTAINMENT

We are a rapidly growing media production entertainment house and radio station. Our business provides a variety of services to people in the creative industry, including music studio hire, podcast studio hire, radio presenter development, music artist development, panellist events, party events, concerts/festivals and many more. We have supported over 120 young people within the broadcasting space and 400+ young people within the creative industry and trained over 150 creatives on how to monetise their talent and creativity with curated events. Tribearbanentertainment.com

WORKFORCE DEVELOPMENT

Sponsored by



lsec.ac.uk

London South East Colleges is a further and higher education college with campuses across Bromley, Bexley and Greenwich. Operating as a social enterprise, we are committed to helping people of all ages and from all backgrounds fulfil their potential. We are responsive to industry; working closely with employers to meet skills needs.

CLEANING EXPRESS

Cleaning Express is growing steadily, becoming recognised for high quality, excellent service, and social responsibility. We have increased our workforce by employing locals to put money back into the local economy. We promote environmentally friendly cleaning and, as part of the Living Wage Foundation, promoting above the minimum wage for our workers. We help the elderly and the disabled make their home clean and safe. We've introduced a programme helping Ukrainian refugees. cleaning-express.com

CSB LOGISTICS

An SME and family business that playing a vital role supporting London's property and construction sectors for over 30 years. Consolidating freight from global supply chains and provide efficient 'last-mile logistics' solutions. CSB is fostering collaborative partnerships with authorities, developers, contractors and suppliers. The 'CSB Family' extends to every employee. The strong ethical principles and values we share, support the welfare of our people, CSB's Apprenticeship Scheme is a huge success. csblogistics.com

METHLEY & DAUGHTERS

Passionate about delivering a social impact, facilitating marginalised women. Our aim is to promote diversity & equality in the workplace, reaching isolated women. We pay our team above the London Living Wage have implemented flexappeal. We share the GLLaB motto: local people for local jobs. I am committed to reach any

woman who needs a chance and support to return to work. methleyanddaughters.co.uk

MICHAEL STREETE FOUNDATION

Not-for-profit organisation with 7+ years of working with vulnerable youth. In the past 12 months, MSFDN has offered support & mentorship programmes, workshops and creative initiatives that motivate, inspire and help youth to get into work, upskill explore their passions, while supporting their health and wellbeing. Recently we supported 30 unemployed young people into full time employment msfdn.com

THE AHOY CENTRE CHARITY

As a charity based on the banks of the Thames, we offer opportunities for disadvantaged and at-risk youths and people with disabilities. We use rowing, sailing and other water activities to offer fun, engaging education with a focus on teaching transferable and employable skills. Our tried and tested methods break down social barriers to participation, instil the confidence and self-worth in our participants to stay in education or follow a path to employment. ahoy.org.uk

ZIPPYS DAY NURSERY

Our expertise is learning through play – focusing on 7 key areas to give your child the foundation they need to excel when they start school. Our rooms are fully equipped to support your child's welfare, growth & confidence. Children love the healthy food made by our experienced in-house chef. zippysnursery.co.uk

YOUNG ENTREPRENEUR

Sponsored by



gre.ac.uk

The University of Greenwich is a place with no limits on where you come from and what you can achieve and has been helping students for over 130 years. Our renowned research and academic capability provide a great opportunity for collaboration with business, whether via short courses, apprenticeships, consultancy services, or bespoke solutions.

BOBA & CO

Boba & Co is an integral part of the high street, having opened just one year ago. It is a family-run business that offers a unique range of products – bubble teas, chais, milkshakes, mojitos, waffles, crepes and other desserts. We are Plumstead born and bred and we love being able to put smiles on people's faces, children jumping at the sight of 'Boba! Boba!' Boosting our local area is something we take great pride in. bobaandco.uk

DRAGO FILMS

London-based video production agency set up by myself, Nacho Santana, studying BA Digital Film Production, and my co-founder Vidush Athauda, with management experience. I drive the creative side of the company and believe in nurturing students by providing opportunities to unlock their potential. Our services include creative direction, production, film, photography, and post-production and has launched 300+ videos for an online fitness platform. A team of talented students from Ravensbourne created the videos. dragofilms.co.uk

EOTT

A mental health support service for young people to normalise conversation about mental issues using fashion, videos and events. The clothing has mental health-related messaging on them and videos include informational and inspiring words. Our events offer offline interaction and community building in a physical space. In the last 12 months we sold out three clothing lines and have received 100,000s views online on our videos. eott19.co.uk

FÉLIE

A growing online home furnishing brand offering innovative décor items, such as vases, bowls and plants that adapt to the ever-evolving trends in the world of interior design. I promote self-care and wellbeing, believing that one's space should be their sanctuary, and eco-system where they gather positive energy to cope with the pandemic. FÉLIE started in October 2020, while I was studying BA (Hons) Architecture at Ravensbourne. felie.co.uk

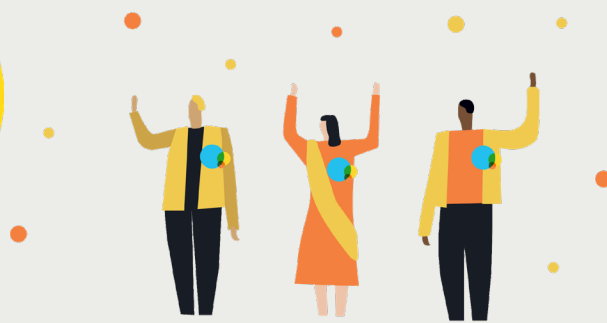
POWER MOBILE GYM

Uniting communities through boxing and mentoring programmes. At Power Mobile Gym CIC we are committed to empowering young people all over London. We work with around 200 young people per week, who are all attending tailored programmes in Royal Greenwich. Our main target is young people aged 11-24. This is a critical period in a young person's life as decisions they make between those ages may be life lasting. powermobilegym.com

PROJECTYOU

An online coaching platform for residents of Royal Greenwich, an affordable and accessible alternative to expensive in-person Personal Training. I started the business in 2016, when I was 18. ProjectYou offers tailored online coaching covering workouts, nutrition and lifestyle habits directly to your phone through an app for less than the cost of a PT each month. This enables my clients to improve their fitness and health on their schedule with the equipment and facilities available to them.

We are a
Living Wage
Employer



THE REAL LIVING WAGE - GOOD FOR BUSINESS - GOOD FOR SOCIETY

The London Living Wage is an independently calculated, voluntary hourly rate of pay, set by the Living Wage Foundation. The rate, which is higher than the government's national minimum wage, represents the minimum amount an employee needs to earn to provide a decent standard of living for themselves and their family. As a proud Real Living Wage Employer, we encourage other local employers to join the movement. With the cost-of-living crisis, it's more important than ever.

Benefits of being a Real Living Wage Employer include:

- Better employee retention
- Happier staff equals more productivity
- Improved relationships between employer and employees
- Improved reputation of business
- Differentiates your company from competitors

"As a fourth-generation family business, we care about our employees. Paying the London Living Wage proves this and is vital in cementing the relationship between all our colleagues. It's not always the easy path for a business, but it is the right path." **Marco Olmi, Managing Director, The Drury Tea & Coffee Company, an accredited Living Wage Employer**



Interested in becoming an accredited Living Wage Employer?
Email business@royalgreenwich.gov.uk to express your interest or to find out more.

MAYOR'S CHARITY RAFFLE

£5 from the sale of your ticket has been donated to the Mayor's charity, Greenwich and Bexley Community Hospice. The donation buys you a ticket for the raffle which Mayor Leo Fletcher will draw at the end of the day.

A big thank you to Lovell who sponsored some fantastic raffle prizes for us.

The prizes are:

- 1ST PRIZE** A one night stay at InterContinental London – The O2 for 2 people in a suite, with a 3-course dinner and a bottle of wine at Market Brasserie Restaurant, including a full-English breakfast and late check-out.
- 2ND PRIZE** Classic Half Day Spa for two people at InterContinental London – The O2, including tea, coffee, pastries on arrival, a 60-minute treatment or facial for each person and general use of the spa facilities)
- 3RD PRIZE** Afternoon Tea for two at InterContinental London – The O2
- 4TH PRIZE** £500 of high street vouchers

THE MAYOR'S CHARITY

The Mayor's charity is **Greenwich and Bexley Community Hospice**. The Hospice is a local charity dedicated to providing free, high-quality, compassionate care and support for people with a terminal illness, their families, and their professional carers.

LOVELL

lovell.co.uk

Lovell has over 50 years' experience partnering with the public sector providing much needed homes and is a development partner with the Royal Borough of Greenwich in Woolwich on a number of developments. Wherever we partner, we seek to provide homes that build a sustainable community and leave a long-term legacy for all.

RINEY

riney.co.uk

Welcome champagne reception sponsor Riney is delighted to support the Royal Borough of Greenwich celebration of local businesses and essential service providers. We are proud to deliver our highway services and contribute towards a cleaner, greener, safer and healthier borough.

Headline sponsor:



Sponsors and supporters:



GreenwichBizAwards

Royal_Greenwich

royal_greenwich

#GreenwichBizAwards

royalgreenwich.gov.uk

