



**Welcome to the
July e-bulletin
for early years and childcare
professionals**



Missed a copy of the e-bulletin?

[Key information and resource links for early years and childcare providers](#) | [Early Years team information \(for providers\)](#) | [Royal Borough of Greenwich \(royalgreenwich.gov.uk\)](#)

Contacts

Parents 020 8921 6921 FIS@royalgreenwich.gov.uk

Providers 020 8921 3877 Childcare-support@royalgreenwich.gov.uk

CHILDCARE APPLICATIONS FOR WORKING PARENTS

By 31 AUGUST 2024

Children can only take up a place and be funded in the Autumn term if the code is dated before 31 August 2024 AND has been verified via Synergy or with Families Information Service AND the child meets age criteria ie **term after** they turn 9 months old, 2 years old or 3 years old

Remember to sign the SLA and ensure that you have a refundable deposit to cover children who are converting places pending headcount payments

Contents

Services for children and families in Royal Greenwich have been rated ‘outstanding’ by Ofsted.....	3
Household Support Grant – Submit data TODAY.....	5
Free meals for children during school holidays	8
Welcome to the new Secretary of State of Education	9
Early Years & Childcare Staff Updates.....	10
Royal Greenwich Early Years & Childcare present at the University of Greenwich.....	11
Wraparound Provision Funding Update	12
Working Parent Entitlements.....	14
DFE Updates	17
Ofsted Updates - Changes to ungraded inspections blog	18
Equity, Diversity & Inclusion – Celebrating employees' Windrush stories.....	20
Celebrating our Borough of Sanctuary status.....	21
Celebrating Your Good Practice.....	22
Health & Wellbeing – Tick Bites.....	24
Training.....	27
Early years child development training.....	30
Childcare Choices.....	33
Keeping Children Safe	35
Safeguarding Training- Free Pre-recorded.....	36
Knife Amnesty bins installed to keep weapons off the streets.....	37
NSPCC Learning.....	38
Child sexual abuse of African, Asian and Caribbean heritage children.....	39
NSPCC Case Reviews July 2024.....	40
Why language matters: how using terms like ‘recruited’ and ‘working’ minimise children’s experiences of criminal exploitation.....	41
Useful Safeguarding Contacts	44

Services for children and families in Royal Greenwich have been rated 'outstanding' by Ofsted



<https://www.royalgreenwich.gov.uk/news/2024/services-children-and-families-royal-greenwich-have-been-rated-outstanding-ofsted>

The report, which comes after an inspection in June, praised the Council's clear and evidenced commitment to listening to the voices of children and young people.

This is the most recent Ofsted inspection of Local Authority Children's Services (ILACS), with the last taking place in 2019 – where services were rated 'good.'

Our hardworking teams support children in foster care, care experienced young people, unaccompanied minors, and families with children who need extra support at home.

Inspectors noted how strong and innovative partnership working with agencies across the borough was 'making a difference to children and young people's lives'.

Political and corporate leaders were praised for working 'tirelessly with partners to improve children's lives' and for their 'unapologetic' ambition as corporate parents.

Children in care and care leavers were said to receive an 'outstanding' service, ensuring that they 'make impressive progress and many thrive once in care.'

Our collective work to support mental health and wellbeing – of both children and staff was commended, as was the pioneering decision to fund eight wellbeing hubs in schools.

The report also praised the ‘impressive’ children and young people who have been instrumental in driving progress forward and holding the Council to account.

Councillor Adel Khaireh, Cabinet Member for Children and Young People, said: “This outstanding Ofsted result is a significant achievement and I’m tremendously proud of our staff, partners and children, who have not only sustained the good practices, but been relentless in driving further progress and improvements.

“This result does not just belong to us. It is a celebration of truly collaborative partnership working. We want to thank our colleagues across the borough – those in local health agencies, schools, children’s centres, youth services, our foster carers and the police – to name but a few – without whom this result would not have been possible.”

Florence Kroll, Director of Children's Services at the Royal Borough of Greenwich said: "An outstanding Ofsted judgement is a fantastic achievement for everyone working in Royal Greenwich children’s services, our partners, our foster carers and our children. It is validation of the commitment, hard work and dedication to the values we hold that place children at the heart of everything we do. I want to thank every person who has contributed to this success.

"Whilst the report is fantastic, we are not complacent and will continue working to strive for excellence in all that we do, to improve the lives of vulnerable children."

Councillor Anthony Okereke, Leader of the Royal Borough of Greenwich, said: “This result is a fantastic credit to Royal Greenwich and demonstrates our tireless work to deliver the best outcomes for our children and young people. From opening eight much-needed wellbeing hubs to recruiting more foster carers, and working closely with partners to safeguard our children, we want every young person to reach their full potential in a safe, protective, and loving environment. Every member of staff, from across the council and beyond, is dedicated to that goal.”

[Read the full report.](#)

Household Support Grant – Submit data TODAY

Through the Government's Household Support Grant, we are issuing targeted payments to support low-income families over the summer holiday. Thank you as ever for your work to support this scheme.

Summer Holiday Payments

The summer holiday payment will be **£60 for each eligible child**.

We are making payments for children aged 0-4 in an Early Years setting who:

- Is in receipt of an Early Years pupil premium, or
- Has an older sibling who is in receipt of free school meals, or
- Is in receipt of Healthy Start vouchers

Please use the attached Early Years template to confirm the following:

- Any Early Years children who since the previous list was submitted are no longer eligible (e.g., left the school)
- Any new Early Years children eligible for a payment since the previous list was submitted
- Any change in mobile telephone number and/or email address (**N.B. this is important as it is the means of payment for families**)

Please complete the spreadsheet you have been and submit by end of the day **Thursday 18 July**.

Please send the finalised spreadsheet(s) and queries to:

wintergrantpayment@royalgreenwich.gov.uk or nicholas.peer@royalgreenwich.gov.uk

If you need a few more days, please contact Nicholas Peer directly asap.

See flyers overleaf.

GREENWICH EARLY YEARS HOUSEHOLD GRANT



Royal Greenwich are supporting some families with some extra money during the Summer school holidays. Parents/carers of eligible children under age 5 registered with a Children's Centre or attending an early years setting, will receive a cash payment of £60.

Eligible children under age 5 include those

- eligible for or in receipt of Healthy Start vouchers (birth to 4)
- eligible for or in a funded Together for Twos place
- in receipt of an Early Years pupil premium
- have an older sibling who is in receipt of free school meal

A code will be sent directly to mobile phones to be redeemed at the post office. So we need your help to collect up to date email and phone numbers or newly eligible children. Please use the form provided and return by

Thursday 18 July

GREENWICH EARLY YEARS HOUSEHOLD GRANT



Royal Greenwich are supporting some families with children under 5 with some extra money during the Summer school holidays.

If you are on low income and your child is eligible for healthy start vouchers, a Together for Twos place (even if you haven't taken up the offer) or Early Years Pupil Premium, or have an older sibling on free school meals, you may be eligible to receive a cash payment of £60 through the post office. Please share your up to date email and mobile phone number with your early years' setting or Children's Centre.

Please contact your local Children's Centre or setting NOW (before **Thurs 18 July**) to find out more or call Families Information Service on 020 8921 6921

HEALTHY
START



Free meals for children during school holidays

Royal Greenwich is ensuring that regular meals are available for all children and young people within the borough during school holidays.

Food is served at multiple locations across the borough, and there's no age limit for children, meaning that nutritious meals are readily available and families continue to receive support outside of school term time.

Meals are available over Summer school holidays between Monday 29th July and Friday 30th August. There are no forms, and no fuss - just turn up and tuck in!



Summer school holidays (Monday 29 July to Friday 30 August)

Woolwich Library and Thamesmere Leisure Centre at 12 noon:

- every Monday, Tuesday, Wednesday, Thursday and Friday
- NOT Monday 26th August

Plumstead Centre and Greenwich Centre at 12 noon:

- every Monday, Wednesday and Friday
- NOT Monday 26th August

Eltham Centre at 12 noon on:

- every Monday, Wednesday and Friday
- NOT Monday 26th August

Plumstead Adventure Play at 2pm on:

- every Monday and Thursday
- NOT Monday 26th August

Woolwich Adventure Play, Meridian Adventure Play at 2pm on:

- every Tuesday and Thursday

Glyndon Adventure Play and Coldharbour Adventure Play at 2pm on:

- every Monday and Thursday
- NOT Monday 26th August

Welcome to the new Secretary of State of Education



Department
for Education

We are the department for opportunity

Secretary of State for Education and Minister for Women and Equalities

The Rt Hon Bridget Phillipson MP

<https://www.gov.uk/government/people/bridget-phillipson>

Read about the role

<https://www.gov.uk/government/ministers/secretary-of-state-for-education>



The new Secretary of State for Education live event

- Bridget Phillipson was appointed as Secretary of State for Education. She has written to all of you working in early years and schools.
- If this letter has not yet reached you, you can read it in full [here](#).
- If you missed the [live event on Tuesday 16th July at 4pm](#) where the new Secretary of State shared her vision for education, children's services and skills, we will send you a recording as soon as it is available

Early Years & Childcare Staff Updates

A Fond Farewell to Kerry Henley



We say a fond farewell to Early Years and Childcare Adviser Kerry Henley who has moved on to pastures new in the countryside. Kerry will be missed by all the providers and practitioners that she has worked with over the years and we will certainly miss her, but hope you join us in wishing her your best on her new adventures.

If you have any farewell messages for Kerry, please email childcare-support@royalgreenwich.gov.uk with “Message for Kerry” in the subject bar and we will pass them on.

Congratulations to Danielle Cook



In May Early Years and Childcare Adviser, Danielle Cook gave birth to a beautiful Baby Girl. She is now on maternity leave. If Danielle was your adviser, then you will now have been allocated to another member of the team. Maternity cover has been recruited and is due to start in the Autumn term. Providers should have been notified of the new allocation but please email childcare-support@royalgreenwich.gov.uk if you are unsure who your adviser is.

Royal Greenwich Early Years & Childcare present at the University of Greenwich

The University of Greenwich Early Years Partnership Event – The Unique Child: Helping Every Child Flourish on the 7 June 2024.

The Early Years and Childcare team were invited to spend the day at the University of Greenwich.

The day started off with an address from the Vice Chancellor Jane Harrington who spoke about the value of collaborations with partners and other professionals to ensure that an inclusive environment and support is provided for our children



The Early Years and Childcare team delivered two workshops on Supporting Two-year-olds in a Childcare setting. The team spoke about the statutory duties the Local Authority must have to secure sufficient, high quality, accessible early education and childcare provision for all children which can only be done effectively when all professionals work together to support a child's development and ensure they have the best outcomes.



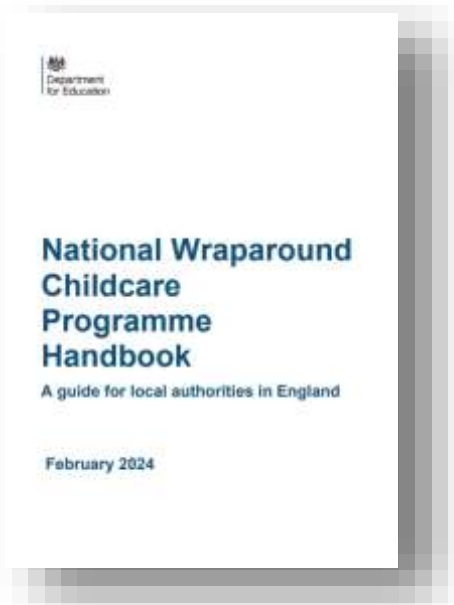
Understanding the architecture of the brain and how a baby's brain growth is stimulated through positive interactions and connections from their lived experiences will enable parents, practitioners and professionals to work together to give children the best start in life. Completing the 2yr integrated review highlights the importance of reviewing a child's development to identify gaps and to celebrate their learning progress.

The team did well with presenting the workshop to students, childcare providers, health professionals and Ofsted inspectors. We were thanked for highlighting the importance of services working together to support children's wellbeing to ensure that appropriate interventions and support is given for children to have the best start in life. Royal Greenwich Early Years & Childcare team look forward to working with the University of Greenwich for any future events

Wraparound Provision Funding Update

Childcare Expansion Capital Grant

Wraparound Programme Handbook



Capital Grant Funding up to £20K

This Grant is to create new additional space and/or expand on existing provision to support new or extra places for the expanded childcare entitlement for babies and two year olds of working parents (with planning ahead to further expansion to 30 hours in Sept 2025) and/or wraparound provision for reception age to Year 6. The places should be available for take up in the Autumn term 2024 and no later than the start of the Spring term 2025.

The purpose of the capital grant is to enable childcare providers to:

- 1) Offer additional early years places through the expanded 30-hours entitlement for qualifying working parents (from the term following the child reaching nine months to the term in which they turn three years old);
- 2) Offer additional wraparound childcare places for primary school-aged children (from reception to Year 6).

Wraparound Revenue Grant Funding up to £10K

This Grant is to support running costs in creating new provision and/or expanding on existing provision to provide full wraparound provision for children from reception age to Year 6 from at least 8:00 to 18:00. The places should be available for take up in the Autumn term 2024 and no later than the start of the Spring term 2025.

Bids can be made by Ofsted registered schools, private, voluntary and independent providers, and childminders on non-domestic premises in partnership with schools or other childcare providers.

We ask that you read the application guidance in full and carefully before completing the application form to understand the criteria. Special consideration will be given to providers who create or expand provision with inclusive places for children with SEND. A link to the application form is embedded into the guidance document.

Please watch this update briefing which you may find useful before completing your application – Childcare Expansion Grant Funding Update webinar.

Please email any supporting documentation for your application to:

childcare-support@royalgreenwich.gov.uk.

The last day for submitting your application form is Friday **19 July 2024**.

Important links

[Grant Funding Application Guidance](#)

[Grant Funding Application Form](#)

[Childcare Expansion Grant Funding Update Slides](#)

[Childcare Expansion Grant Funding Update Webinar](#)

[National Wraparound Programme Handbook](#)

Working Parent Entitlements



<https://www.childcarechoices.gov.uk/>

NEW APPLICATIONS: Eligible working parents of babies aged 9 – 23 months, 2-year-olds and 3 year olds can apply for their code to take up a place from 1 September 2024 from **12 May**. Let them know you need the codes before the end of term so you can verify the codes and plan your intake for the Autumn term. All codes must be verified before a child is offered or takes up a place. Parents who need to reconfirm their Tax Free Childcare before 12 May will receive a letter with a temporary code by 24 May.

When you receive a code, you can validate on Synergy here [Provider Portal](#). If you need to be set up, please childcare-support@royalgreenwich.gov.uk with your request

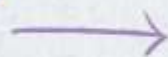
If you receive queries from parents regarding their eligibility, you direct them to <https://www.childcarechoices.gov.uk/> and they can call **HMRC on 0300 123 4097** in the first instance. This is the parent-facing website which helps parents understand what entitlements they may be able to receive.



free early learning
Royal Greenwich

Are you a working parent eligible for a funded place for your 9 month, 2, 3 or 4 year old from September 2024?

Apply for or renew your code well before 31 August 2024



Childcare
Choices

Take your code to your setting in good time so they can double check your code with the local authority and allocate a place for your child – you may need to pay a refundable deposit. If your setting is closed during the school holidays, contact FIS

fis@royalgreenwich.gov.uk or 020 8921 6921



free early learning
Royal Greenwich



free early learning

Royal Greenwich

Are you eligible* for a funded 30 hours place for your 3 and 4 year old or working parents funded 15 hours place for your 9 – 23 month old or 2 year old from September 2024?

*If you are a working parent (including working foster parents) and your child is aged 9 months plus, 2, 3 or 4 on or before 31st August 2024, you may be eligible depending on your income and if you have a valid code.

- Check before 31 August 2024 if you are eligible and remember to reconfirm your code every 3 months to keep your funded place
- Set up or go to your Childcare Account www.childcarechoices.gov.uk
- If you already claim Tax Free Childcare and need to reconfirm, you will get a temporary code by letter
- Your code must be dated no later than 31 August 2024
- Take your eligibility code to your early years' setting or school as soon as you can or if your setting is closed, contact FIS. The code must be checked before your child can be offered or take up a place in the Autumn term. All codes must be double checked with the local authority.
- Your child must also be age eligible ie they have had their 9 month old, 2nd or 3rd birthday by 31st August 2024.
- You may be asked to pay a refundable deposit to hold your place and until your provider receives funding from the local authority

fis@royalgreenwich.gov.uk or 020 8921 6921



Childcare **Choices** free early learning
Royal Greenwich

DFE Updates



‘Do Something BIG’ early years recruitment campaign – upload vacancies to Find a Job

<https://earlyyears Careers.campaign.gov.uk/>

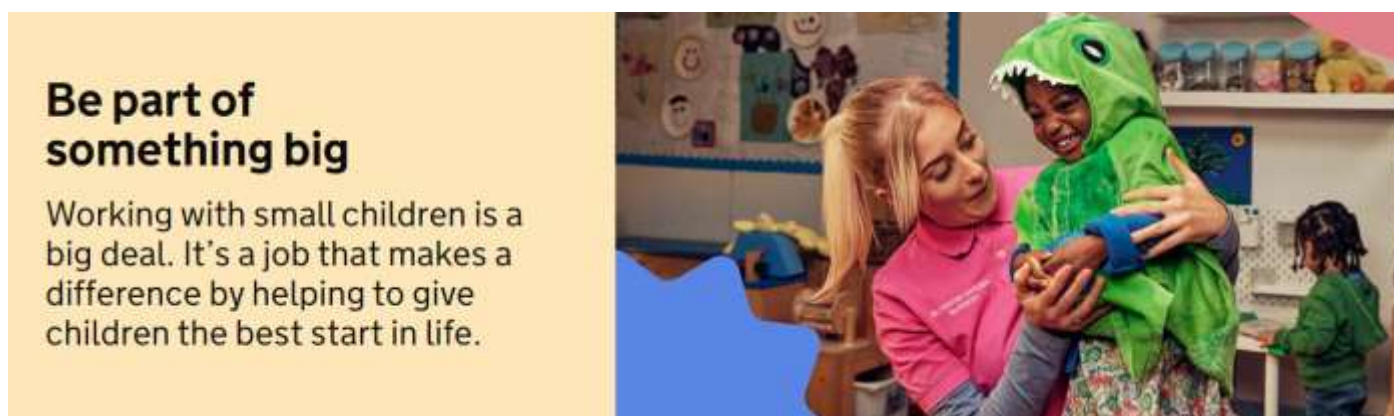
The [Do Something BIG](#) recruitment campaign and website are continuing in the run up to the next stage of the childcare entitlements expansion in September 2024.

The website directs potential applicants to use DWP’s [Find a Job](#) vacancy platform to search for early years roles in their area.

Please list your vacancies on Find a Job ahead of the next wave of the campaign.

Providers should use the term ‘early years’ in the title of the job adverts and select ‘Education jobs’ for the job category.

This service is free to use and will ensure vacancies are seen by a large pool of potential candidates.



Ofsted Updates - Changes to ungraded inspections blog



An Inspector Calls



<https://educationinspection.blog.gov.uk/2024/07/17/changes-to-ungraded-inspections/>

In this blog, Ofsted talk you through the changes they will be making to ungraded inspections in the autumn term.

“You may already be aware of these changes from the announcements that Sir Martyn Oliver made in his speech to the NAHT in May. In his speech, Sir Martyn talked about the importance of professional dialogue between the inspection team and school leadership during inspections. The emphasis of ungraded inspections will be on providing school leaders with opportunities to demonstrate where they have improved and to discuss where they still have work to do. Because of this, we have announced that from the autumn term onwards, we will no longer carry out deep dives during ungraded inspections.

So, what will ungraded inspections look like now? And how do we know this approach will work?

Trying out the new approaches

Since the announcement, we’ve been working on what ungraded inspections will look like in practice. To make sure that we get this right, we asked some of you to be involved. I’d like to thank those of you who offered up your time to give us your honest feedback and who invited us into your schools to help us check whether we were on the right lines. This has made us even more confident that these changes are for the better.

So, what did we do? First of all, we spoke to some school leaders about what we were planning to change. Then we went to a range of schools to try out parts of the inspection or do a ‘walk through’ of a whole inspection. At each point, we’ve taken feedback both from school leaders and our inspectors about what is working well, and have changed things along the way. As we have said since the beginning of this year, we’re serious about listening, serious about acting and serious about improving. And from these valuable discussions, we’ve now got our new way of working ready to go in the autumn term.

How will a new ungraded inspection begin?

As you would expect, the day before the on-site inspection begins, we'll have an extended phone conversation with you. This phone call is about working out what we need to do during the on-site inspection to get the evidence we need.

In this call, the headteacher will be able to talk to the lead inspector about some of the things that really matter in their school. They will discuss the school's context, the things that the school does well and the things that have improved since the last inspection. And there will be the chance to discuss anything that leaders still need to tackle to make the school the best it can be. Of course, this call doesn't need to be just with the headteacher. In fact, we'd actively encourage headteachers to have someone else with them, or indeed a few of the senior team, who can all contribute to this important conversation.

The lead inspector will have done some preparation before this call, and will have some questions to ask leaders. These might come from the data they've seen in the IDSR or from looking at the school's website and previous inspection report.

Through this conversation, the lead inspector will agree with the headteacher several areas of focus for the inspection. These will take account of things that the inspector wants to look at and things that are particularly important to the school – for example something the school has been working on, or something related to its particular context.

What will ungraded inspections look like when inspectors are in school?

The areas of focus will influence what inspectors do when they're in school. At least a couple of these areas will be related to the quality of education, as you might expect. But they won't focus on one subject and they won't be deep dives. Instead, inspectors will look at a group of subjects together. So, in a primary school, they're likely to look at early English and early mathematics together as a group so they can make sure that schools are getting these important basics right. Or they might look at a group of subjects from the wider curriculum. In a secondary school, there could be a focus on the core subjects and another focus on, for example, vocational subjects. We might focus on a specific aspect across these subjects. For example, perhaps a school has been working on improving assessment. We might then go with the headteacher or another senior leader to visit lessons in a group of subjects and discuss the impact of this new assessment work.

And there will usually be one or two other areas of focus too. These might be related to personal development, behaviour, attendance, or something that includes all of these. Again, these will be decided during the initial phone conversation and will be tailored to the school.

What will ungraded inspections feel like?

We have been transparent about the fact that some of the conversations we have during ungraded inspections may be challenging, but these changes will allow for a proper conversation between professionals about the school's strengths, and its areas for improvement.

We're also aiming to reduce the burden on subject leaders. Headteachers and senior leaders have said that they sometimes feel out of the loop with deep dives because they're not part of that process. But headteachers and senior leaders will be central to the new ungraded inspections. These inspections will focus more on a dialogue between headteachers and their senior leaders. So, while we will still want to have conversations with subject leads, they won't be as intensive.

Other elements of inspection, including the framework and inspection methodology are not changing.

When will we find out more details?

New inspection handbooks in September and produce some informative videos for schools that will expand on the information.

Equity, Diversity & Inclusion – Celebrating employees' Windrush stories

FAIRER SAFER ACCESSIBLE INCLUSIVE

Have you signed up yet to the Equality and Equity Charter? Sign up now on link or scan QR code with your phone camera

<https://www.royalgreenwich.gov.uk/xfp/form/677>

Sign our Equality and Equity Charter →



As part of this year's Windrush Day celebrations, Children's Services colleagues Nicole Allwood and Kallie Schut shared their families' stories.



<https://youtu.be/W8Vo6zG5xDg>



<https://youtu.be/D6rdpx9wEF8>

Do you know of a community group or organisation who could deliver community arts or heritage activities to celebrate Black history and culture? If so, let them know they can apply for our Black History 365 (BH365) grants until 5pm on Sunday 28 July. [Learn more about BH365.](#)

Celebrating our Borough of Sanctuary status



On Tuesday 16 July Royal Greenwich launched an exhibition featuring local students' artwork to celebrate becoming a Borough of Sanctuary. The children's artwork, depicting the theme of 'Our Home', will be on display at Tramshed in Woolwich until 29 July. 10 schools across the borough participated.

Our status as a Borough of Sanctuary means we have been recognised for the substantial policy and practice changes we have made as a Council. It is also confirmation of our commitment to making sure that Royal Greenwich continues to be inclusive and welcoming, that we are meeting people's specific needs, and that we will continue to listen to and amplify the voices of refugees, asylum seekers and migrants.

If you have lived experience as a refugee or asylum seeker in Royal Greenwich and would like to be involved in the planning of this celebration, or to share your story, please contact borough-of-sanctuary@royalgreenwich.gov.uk

Celebrating Your Good Practice

Congratulations to all of our dedicated practitioners who have completed their EYPDP - you have been amazing!!





Health & Wellbeing – Tick Bites



<https://www.nhsinform.scot/illnesses-and-conditions/injuries/skin-injuries/tick-bites>

Ticks are small, spider-like creatures which feed on the blood of birds and mammals, including humans. They vary in size, usually between 1mm to 1cm long. They have either 6 or 8 legs.

Where ticks are found

Ticks feed off of a variety of mammals and birds, including squirrels, deer, sheep and garden birds. This means they're usually found in areas with these animals, like:

- woodland
- moorland
- grassy areas
- gardens

Ticks don't fly or jump but climb on to animals or humans as they brush past.

About tick bites

Tick bites aren't usually painful and sometimes only cause a red lump to develop where you were bitten. However, in some cases they may cause:

- swelling
- itchiness
- blistering
- bruising

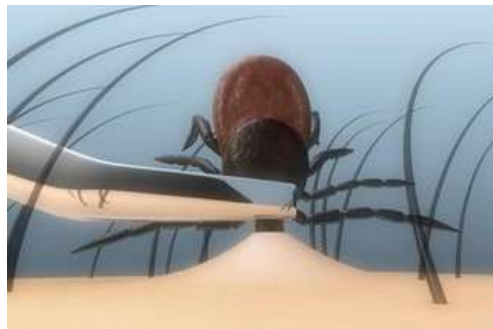
Preventing tick bites

Do

- keep to footpaths, clear paths where possible and avoid long grass when out walking
- wear appropriate clothing (a long-sleeved shirt and trousers tucked into your socks)
- wear light-coloured fabrics that may help you spot a tick on your clothes
- use insect repellent on your clothes and skin – products containing DEET are best
- check skin for ticks
- check children's head and neck areas, including their scalp
- make sure ticks are not brought home on your clothes
- check that pets do not bring ticks into the home in their fur

How to remove a tick

1. Using fine-toothed tweezers, gently grip the tick as close to the skin as possible.
2. Pull steadily away from the skin without twisting or crushing the tick.
3. Wash your skin with water and soap afterwards.
4. Apply an antiseptic cream to the skin around the bite.





<https://youtu.be/SFGEcS7CGbw>

Complications of tick bites

A small proportion of ticks carry the bacteria that can cause Lyme disease. Being bitten doesn't mean you'll definitely be infected. However, it's important to be aware of the risk and speak to a GP if you start to feel unwell.

Non-urgent advice: Speak to your doctor if you have:

- a pink or red rash
- a temperature of 38°C (100.4°F) or above
- other flu-like symptoms, like a headache or joint pain
- swollen lymph nodes

Lyme disease is a bacterial infection that can be spread to humans by infected ticks. It's usually easier to treat if it's diagnosed early.

Symptoms of Lyme disease

A circular or oval shape rash around a tick bite can be an early symptom of Lyme disease in some people. The rash can appear up to 3 months after being bitten by an infected tick, but usually appears within 1 to 4 weeks. It can last for several weeks.

The rash can have a darker or lighter area in the centre and might gradually spread. It's not usually hot or itchy. The rash may be flat, or slightly raised, and look pink, red, or purple when it appears on white skin. It can be harder to see the rash on brown and black skin and it may look like a bruise.



The rash may look like a bullseye on a dartboard. Sometimes the edges of the rash may feel slightly raised. Some people also get flu-like symptoms a few days or weeks after they were bitten by an infected tick, such as:

- a high temperature, or feeling hot and shivery

- headache
- muscle and joint pain
- tiredness and loss of energy

Non-urgent advice: See a GP if:

- you've been bitten by a tick or visited an area in the past 3 months where infected ticks could be and you have:
- flu-like symptoms – such as feeling hot and shivery, headaches, aching muscles or feeling sick, or
- a round or oval shape rash

Tell them if you have recently been in forests or grassy areas.



https://youtu.be/2Y9yo_OiIzc

What is tick-borne encephalitis virus (TBEV)?

TBEV is a viral infection that spreads through tick bites. Although it is prevalent in many parts of the world, including several European countries, in the last few years, ticks carrying TBEV have been found in England.

What are its symptoms?

TBEV causes a range of diseases, from completely asymptomatic infection to mild flu-like illness, all the way to severe infection in the central nervous system such as meningitis or encephalitis (swelling of the brain). Symptoms of [encephalitis](#) can include a high fever with a headache, neck stiffness, confusion, seizures or fits, reduced or loss of consciousness.

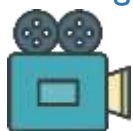
Seek urgent medical attention if you or anyone you know experiences symptoms of meningitis:

- severe headache
- stiff neck
- pain looking at bright lights

Seek urgent medical attention if you or anyone you know develops neurological symptoms:

- a fit (seizure), if not known to be epileptic
- sudden confusion or change in behaviour
- weakness or loss of movement in arms and legs
- facial drooping, change in vision or slurred speech

Training



Bitesize Webinars and Online Trainings



A series of free webinars with Early Years & Childcare Advisors to share key messages about important themes. You may use these for your staff training and inductions. You will need to register each individual person so we can track take up.



Book your place here by scanning QR code or clicking on link
<http://tinyurl.com/EYC-Training-Portal>



To receive link and watch, email eyc.training@royalgreenwich.gov.uk
Pls do not share the link with anyone else and remember to complete evaluation to receive certificates and handouts.

Please complete evaluation to receive a copy of the presentation/certificate.

State name of training



- Ofsted Trends
- Staff Wellbeing
- Child Safety
- Having Difficult Conversations with Parents
- Mental Health Awareness
- Female Genital Mutilation
- LADO Managing Allegations
- Emergency Planning
- Child Exploitation
- Fabricated Illness
- Child Abuse Linked to Faith & Belief
- Provider Forum – CSA & Expansion
- Welfare Rights for the Self Employed – openly available
- Childcare Sufficiency Briefing
- Synergy – Funding Portal User Guide – openly available

Area	Training Courses/Webinars	Day	Date	Start	End	Cost
Safeguarding & Welfare	Designated Safeguarding Person	Saturday	21 September 2024	09:30	17:00	£60.00
Ofsted Readiness	Looking Ahead to Ofsted	Thursday	26 September 2024	19:00	21:00	Free
Ofsted Readiness	Ofsted Trends	Tuesday	01 October 2024	19:00	21:00	Free
Safeguarding & Welfare	Compassionate Mind Training	Tuesday	08 October 2024	17:00	19:00	
Safeguarding & Welfare	Intermediate Safeguarding	Thursday	10 October 2024	09:30	13:00	£45
Learning & Development	Curriculum & Teaching	Saturday	12 October 2024	09:30	13:00	£45
Learning & Development	Safeguarding Forum	Thursday	17 October 2024	18:30	20:30	Free
Safeguarding & Welfare	Safer Recruitment	Tuesday	05 November 2024	09:30	13:00	£45
Learning & Development	Makaton Training- Level 1 Session 1	Monday	07 November 2024	10:00	15:00	£55 inclusive
Safeguarding & Welfare	Intermediate Safeguarding	Saturday	16 November 2024	09:30	13:00	£45
Learning & Development	Makaton Training- Level 1 Session 2	Monday	18 November 2024	10:00	15:00	£55 inclusive
Learning & Development	Equality Diversity & Inclusion	TBC	TBC	09:30	12:00	£30
Safeguarding & Welfare	Domestic Abuse Awareness	Tuesday	26 November 2024	19:00	21:00	£30
Safeguarding & Welfare	Designated Safeguarding Person	Thursday	05 December 2024	09:30	17:00	£60
Learning & Development	Childminding Network	TBC	TBC	19:00	21:00	Free

Cancellation Policy Must be made in writing by e-mail at least 14 working days before the course eyc.training@royalgreenwich.gov.uk

Where cancellation is not received, and you do not attend the training you will be charged the full amount – where courses are free, you will be charged an admin fee of £10.



Book via Direct Services to Schools below or the attached QR code

<https://servicestoschools.royalgreenwich.gov.uk/courses/list?category=pvi>

<http://tinyurl.com/EYC-Training-Portal>

Paediatric First Aid Training Dates

Day	Dates	Start	Finish	
Wednesday	18 September 2024	08:45	16:30	£50.00
Wednesday	16 October 2024	08:45	16:30	£50.00
Saturday	26 October 2024	08:45	16:30	£50.00
Saturday	09 November 2024	08:45	16:30	£50.00
Wednesday	20 November 2024	08:45	16:30	£50.00
Saturday	07 December 2024	08:45	16:30	£50.00



IMPORTANT NOTICE


You must complete the online part of PFA before you attend the in-person date. You will be sent a link in advance of the in-person date.

You **must arrive on time** so leave good time for your journey. If you are late, you will not be permitted entry and will still be charged. This is to ensure you complete the hours required for certification.

There is an exam which you must pass before receiving your certificate on the day.

If you do not pass, you will need to do the course again to safely embed your knowledge and practice. You will have to re-book and pay for the course again.

Training support available from DFE

<p>Help for early years providers Guidance for people who work in early years, from the Department for Education.</p>	<p>The Help for early years providers has a wealth of information that can help. For example, there's useful advice on reducing paperwork so you have more time to focus on areas such as sensory food education.</p>
<p>Early years child development training</p> 	<p>This training:</p> <ul style="list-style-type: none">• is free for childminders and nurseries• combines theory with practical tips and ideas to use in your setting• includes opportunities to reflect on your practice• reinforces your understanding through learning check questions and tests• links to additional resources• offers the opportunity to download certificates of completion• has been developed by expert practitioners• 5 modules can be completed in any order and at any time <p>Early years child development training : Home page (education.gov.uk)</p>



Department
for Education

New online Early years child development training

Developed by early years experts

- Build your child development knowledge.
- Get practical advice for supporting children in your setting.
- Test your knowledge and reflect on your practice.
- Watch practical training videos.



Pause and restart the training at any time



Make notes as you learn



Download certificates after each module

Find out more by visiting:
child-development-training.education.gov.uk

UNDERSTANDING YOUR CHILD



Online Offer

This is free online for any parent or professional in Greenwich.

- **Parent carers** can also access courses via registration at

www.inourplace.co.uk

Using the code **RBGFAMILY** and entering a Greenwich postcode.

- **Professionals/Family Hub Staff** working in Greenwich can access them by going to:

<https://solihullapproachparenting.com/online-courses-prf-greenwich/>

Entering the access code **RBGFAMILY_PRF** and a Greenwich postcode (work or home) when registering

The content includes all courses for Parents online plus

- Understanding Brain Development
- Understanding Attachment
- Understanding Trauma

Childcare Choices



HELP PAYING FOR YOUR CHILDCARE



An online application is quick and easy

You get an immediate response on whether you
are eligible for a place



Access the online portal
<https://tinyurl.com/Together-for-Twos>

GOV.UK **Childcare Calculator** >

Get an **estimate** of how much help you can get with Tax-Free Childcare and other offers.

<https://www.gov.uk/childcare-calculator>

GOV.UK **Apply now** >

<https://www.gov.uk/apply-for-tax-free-childcare>
<https://www.gov.uk/apply-30-hours-free-childcare>



<https://www.childcarechoices.gov.uk/>

Here is the link to some videos from Childcare Choices which you can share on your social media

<https://www.childcarechoices.gov.uk/providers/guidance-and-resources/social-media/short-films-2022/>

HOW MANY HOURS OF CHILDCARE CAN YOU GET PER WEEK?

Age
3-4
years

Age
2
years

Age
9-23
months

ALL PARENTS

15 HOURS	15 HOURS	15 HOURS	15 HOURS
Now	APR 2024	SEP 2024	SEP 2025

FAMILIES RECEIVING SOME ADDITIONAL FORMS OF GOVERNMENT SUPPORT

15 HOURS	15 HOURS	15 HOURS	15 HOURS
Now	APR 2024	SEP 2024	SEP 2025

WORKING FAMILIES

15 HOURS	30 HOURS
SEP 2024	SEP 2025

WORKING FAMILIES

30 HOURS	30 HOURS	30 HOURS	30 HOURS
Now	APR 2024	SEP 2024	SEP 2025

WORKING FAMILIES

15 HOURS	15 HOURS	30 HOURS
APR 2024	SEP 2024	SEP 2025

Over 38 weeks a year

Providers may apply additional charges.

Sign up on Childcare Choices for updates [Upcoming changes to childcare support | Childcare choices](#)

Keeping Children Safe

Contact Children's Services

Emergency Duty Team (out of office hours only): 020 8854 8888

Referral team: 020 8921 3172

Email: mash-referrals@royalgreenwich.gov.uk

You don't need to be sure that a child or young person has been abused - it's OK to report a suspicion.

Early Years & Childcare



020 8921 3877



childcare-support@royalgreenwich.gov.uk



020 8921 4477



safeguardingchildren@royalgreenwich.gov.uk

LADO



020 8921 3930



childrens-LADO@royalgreenwich.gov.uk

Ofsted: 0300 123 4666 / enquiries@ofsted.gov.uk

DBS Regional Office: 0300 105 3081 / Kiranpreet.rehal@dbs.gov.uk

DBSRegionaloutreach@dbs.gov.uk



Prevent Team 020 8921 8340



prevent@royalgreenwich.gov.uk

This is the Greenwich Domestic Violence and Abuse Service.



Telephone: 020 8317 8273



Email: info_gdva@h4w.co.uk

All children in Royal Greenwich, regardless of their background and circumstances, should have a happy and fulfilled childhood where they enjoy school and family life, learn, belong, grow and achieve so that they enter adulthood ready, willing and able to achieve their highest potential.



Free Safeguarding Bitesize Webinars



Please complete evaluation to receive a copy of the presentation/certificate.

State name of training



<https://tinyurl.com/EYC-Evaluation>

If you missed the free webinars, email eyc.training@royalgreenwich.gov.uk for your link. You cannot share this link with anyone else except people who have registered.

You will have 21 days to watch the video and complete the evaluation for your certificate and any handouts.

The QR code will be in the video and in the YouTube notes

- Female Genital Mutilation
- LADO Managing Allegations
- Emergency Planning
- Child Exploitation
- Fabricated Illness
- Child Abuse Linked to Faith & Belief

Knife Amnesty bins installed to keep weapons off the streets



<https://www.royalgreenwich.gov.uk/news/2024/knife-amnesty-bins-installed-keep-weapons-street>

Royal Greenwich has installed two knife amnesty bins in Sutcliffe Park (Eltham) and Abbey Wood to tackle knife crime in the borough. People will be able to use the bins to dispose of dangerous weapons anonymously and safely without fear or prosecution.

The bins are placed in:

- Sutcliffe Park, Meadowside, Eltham SE9. Located to the right of the main entrance on Eltham Road.
- Abbey Wood, located near the Abbey Wood library, located at the back of the Old Council Office on Eynsham Drive/Finchdale Road, SE2.

Over the last two years, 899 knife offences have been reported in Greenwich, having a devastating effect on communities of all ages.

Councillor Rachel Taggart-Ryan, Cabinet Member for Community Safety and Enforcement, said: “The knife amnesty bins have been installed in locations where residents have reported reduced feelings of safety as part of our drive to ensure that everyone is safe, and feels safer in parks and open spaces in the borough.

“We have listened to local communities in these areas and have developed this initiative in close collaboration with them. It is also part of our wider campaign to tackle knife crime following the launch of our [‘Let’s Live #KnifeFree’](#) campaign last year aimed at encouraging people to live their life and drop the knife.”

The amnesty bins are securely bolted to a concrete base and have a letter box design to allow anyone to deposit a knife but to stop people from being able to reach the contents inside. The amnesty bins will be emptied by our partner organisation Word4Weapons, and the Council and local police will receive a full report of its contents. The knives will then be disposed of by police in a location outside of the borough.

Visit royalgreenwich.gov.uk/knifefree to find out more about our ‘Let’s Live #KnifeFree’ campaign, the risks of carrying a knife and the help and local support available.



NSPCC Learning

Keeping children safe in education

NSPCC Learning has created a summary of the proposed changes to the Department for Education's statutory guidance for schools in England, Keeping children safe in education 2024 (KCSIE). KCSIE 2024 is currently for information only. Once the final version is published, it will come into force in September 2024. The proposed changes include: amendments to the definition of safeguarding in line with Working together to safeguard children 2023; additional information about early help; and information on data protection.

[Keeping children safe in education \(KCSIE\) 2024: summary of changes](#)

Bullying

The National Children's Bureau has published a blog post for schools and youth organisations on distinguishing between banter and bullying. The blog discusses: recognising when banter is appropriate; empowering young people to set personal boundaries; and implementing a school-wide approach.

["But Miss, it was only banter..." How do we equip children with the skills to understand when banter has gone too far?](#)

Children in care

Coram has published a play script for schools and youth groups to perform about the past and present of the care system. The script was created in collaboration with care-experienced young people and is suitable for audiences aged 14-years and over. A digital resource pack to support schools and youth groups to stage performances is also available.

[Coram publishes play script about the past and present of the care system for schools and youth groups to perform](#)

Child mental health

The Association for Child and Adolescent Mental Health (ACAMH) has published a blog post on the mental health consequences of school anxiety and emotional based school avoidance (EBSA) in children. The blog discusses potential causes of school anxiety and EBSA and looks at the influence on: anxiety and depression; social isolation and loneliness; and low self-esteem and self-efficacy.

[What are the mental health impacts of school anxiety and emotional based school avoidance \(EBSA\)?](#)

Child sexual abuse of African, Asian and Caribbean heritage children

The Centre of Expertise on Child Sexual Abuse (CSA Centre) and Barnardo's SEEN have published a knowledge review on the sexual abuse of African, Asian and Caribbean heritage children in the UK. The report examines existing research and looks at the nature of sexual abuse; the impact of child sexual abuse (CSA); barriers to disclosure and identification; service responses; and intersectionality. The review identifies learning and actions which could be applied to practice and highlights the limitations and gaps in the research base.

[Supporting victims & survivors | CSA Centre](#)



Read the report - [Child sexual abuse of African, Asian and Caribbean heritage children: a knowledge review](#)

NSPCC Case Reviews July 2024

[Child safeguarding practice review: Alex.](#)

Karen Perry (2024)

[0123 Child X: local child safeguarding practice review.](#)

Lucy Young (2024)

[Arthur Labinjo Hughes: a focused review of local practice.](#)

Ineqe Safeguarding Group [Solihull] (2024)

[Sophia's safeguarding practice review.](#)

Catherine MacDonald (2024)

[Child safeguarding practice review \(CSPR\): Samantha.](#)

Sarah Williams (2023)

[Child practice review report: concise child practice review: re: Elena.](#)

Deborah Davies (2022)

[Significant case review Child P.](#)

Zoe M. Dunhill (2022)

Why language matters: how using terms like 'recruited' and 'working' minimise children's experiences of criminal exploitation



<https://youtu.be/eDLi6ssBEek>

When you hear the words 'recruited' or 'working' you probably think about legal, safe employment. However, these terms are used by those who groom and coerce children and young people into criminal activity such as moving money and drugs. When these terms are also used by the wider public and by safeguarding professionals it can reinforce this idea of 'working' and legitimise child criminal exploitation (CCE).

Terms like 'recruited' and 'working' also mask the harm caused by child criminal exploitation. They imply that the child or young person is responsible for, and in control of, the situation they are in. These perceptions can then prevent children and young people from receiving the protection, help and support they need.

The language doesn't reflect the harm caused

Learning from case reviews shows that professionals don't always recognise safeguarding concerns when working with young people who are experiencing criminal exploitation. In some cases, this was exacerbated by the language professionals used to discuss and record information about young people's lives.

> [Learn more about the impact of victim-blaming in our Child sexual exploitation: learning from case reviews briefing](#)

Those seeking to exploit children often do so through a process of grooming. This involves perpetrators gaining a child or young person's trust in order to control and force them to take part in criminal activity. This can happen in person and online, including through 'professional' adverts designed to appeal to young people on social media platforms.¹ Children and young people are also sometimes coerced into encouraging their friends or peers to take part in criminal activity.²

This process of grooming is sometimes called being 'recruited.' However, the term 'recruited' fails to reflect the premeditated manipulation involved. It also masks the power and control that perpetrators seek to exert over children and young people.

> [Learn more about recognising the signs of grooming](#)

Not all children experiencing child criminal exploitation are groomed and some children experience being trafficked or forced into modern slavery.³ Children experiencing child criminal exploitation are often described as ‘working’, however in reality, children and young people are forced to undertake activity that is criminal.

[> Find out more about protecting children from trafficking and modern slavery](#)

Children involved in criminal activity are at risk of, and potentially experience, abuse and other harms.⁴ This can include being made to sleep in residences taken over for drug distribution, being threatened with or actually experiencing violence, being at risk of arrest and having the safety of friends and family threatened.⁵

The language reinforces the idea that the child or young person has chosen to be involved in criminal activity

Terms like ‘working’ focus solely on the actions of the young person, suggesting that they are freely choosing to be involved in criminal activity. They adultify the child, feeding into the perception of them as ‘streetwise’ and ‘grown up’ rather than as a child who needs a safeguarding response. ‘Working’ and similar language fails to reflect the manipulation, pressure and coercion used by perpetrators of child criminal exploitation. For example, some children who have been exploited experience high levels of threat and blackmail.⁶

Victim-blaming language that focuses solely on a young person’s actions and involvement in criminal activity can also lead professionals to perceive the young person first and foremost as a perpetrator of crime. Criminalising rather than protecting young people can result in opportunities for support and intervention being missed.^{7,8}

Use language that children are comfortable with and that helps them talk about their experiences

Children and young people often aren’t aware that they are being exploited. They may not relate to language like ‘being groomed’ or ‘targeted’ as they think it is their choice to be ‘working’.⁹ They may also be distressed by language like ‘criminal exploitation’. This can be because they are afraid that by acknowledging that a crime has been committed against them, they will be responsible for getting other people in trouble. They might also be scared that they will be seen as a ‘snitch’.^{10,11}

Young people have their own terms to describe their lives and experiences of criminal exploitation.¹² It’s useful to be aware of and curious about the language young people use. This can create opportunities for discussion, giving children and young people the space to explore their thoughts, feelings and experiences of child criminal exploitation.

Using child-centred language, validating children and young people’s experiences and building relationships with them can help you identify other potential risks.¹³ However, it’s still important to clearly communicate your concerns and talk about the characteristics of exploitation and the different ways it can occur.¹⁴

Use language that clearly describes the safeguarding concerns the child is experiencing

When a child or young person has experienced criminal exploitation, many different agencies, such as the police, education and children’s services, may be involved. Agencies should focus on a safeguarding response rather than a criminal justice response.

In written and verbal communications, it’s important to use common terms and language that clearly describes what has happened. For example, instead of saying the child ‘has been recruited by’ or ‘is working for a gang,’ say ‘the child has experienced criminal exploitation’ or ‘been groomed’ or ‘been targeted to distribute drugs’.¹⁵

It's also important that professionals from different agencies understand the level of risk surrounding a child and the type of intervention required.¹⁶ Using terms like 'working' and 'recruited' in professional practice doesn't communicate the level of risk or harm a child is experiencing.

By using clear language when talking about child criminal exploitation, professionals working with a child can build an accurate picture of their experience and identify support that meets their needs. Avoiding terms like 'recruited' and 'working' and re-framing how we talk about child criminal exploitation can help professionals recognise the exploitation and help young people better understand what has happened to them.

Key points

- Terms like 'working' and 'recruited' can minimise the exploitation a child or young person is experiencing and hide the true nature of the abuse and harm.
- Children may not be aware that they are experiencing criminal exploitation and may not relate to or engage with the language professionals use. Use language that children are comfortable with. This can help them to talk about their experiences and help you clearly communicate concerns.
- Move away from terminology used by people who exploit children and use language that focuses on the harm the child has experienced. This can help everyone working with the child discuss and identify the right level of support needed.

Royal Greenwich Children's Services Useful Safeguarding Contacts

Children's Services Front Door (Safeguarding, Social Care & FaASS previously Early Help)	
'Multi Agency Safeguarding Hub' (MASH) MASH-referrals@royalgreenwich.gov.uk	020 8921 3172
Safeguarding Consultation Line	020 8921 2267
Social Care and Safeguarding Emergency Duty Team Childrens-Out-Of-Hours@royalgreenwich.gov.uk	020 8854 8888
Local Authority Designated Officer - Winsome Collins Service Leader	
childrens-LADO@royalgreenwich.gov.uk	020 8921 3930
Sadie Bates – DO PVI/ CMs Laura Lhumbis –DO Schools	020 8921 3930
Greenwich Safeguarding Children Partnership	
Greenwich Safeguarding Children Partnership website http://www.greenwichsafeguardingchildren.org.uk	020 8921 4477
Prevent	
Adam Browne – Prevent Co-ordinator	020 8921 8321/ 8340
Confidential Anti-Terrorist Hotline	0800 789 321
Police 999	
CAIT - Child Abuse Investigation Team	0207 230 3705
Ofsted	
Ofsted enquiries, complaints, investigation, and enforcement	0300 123 1231
Royal Greenwich Early Years	
Early Years & Childcare	020 8921 3877
Families Information Service	020 8921 6921
Support, Advice & Signposting	
NSPCC	0808 800 5000/ 0800 136 663
Childline	0800 1111
Samaritans	08457 909090
Family Lives - Parentline	0808 800 2222
Young Minds – Parent Helpline	0808 802 5544
CAMHS	0203 260 5211
Greenwich 0 to 4 Health Visiting Service bromh.greenwich0to4@nhs.net	0300 330 5777
Greenwich Local Labour & Business (GLLaB) apprenticeships@royalgreenwich.gov.uk gllab-jobs@royalgreenwich.gov.uk	0208 921 2440
Children with Disabilities	
Disabled Children's Social Work & Occupational Therapy	020 8921 2599
Disabled Children's Keyworker Team	020 8921 4939
SEND Assessment & Review Service	020 8921 8029
SEND Outreach Support Services	020 8921 3311