



Easy
Read

Our plan for children and young people with Special Educational Needs



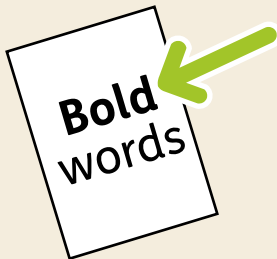
Easy Read



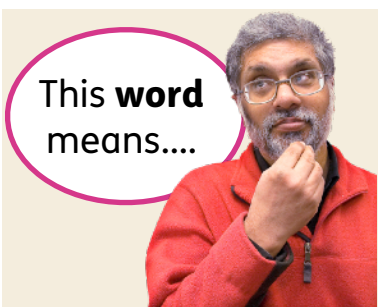
This is an Easy Read version of some information. It may not include all of the information but it will tell you about the important parts.



This Easy Read booklet uses easier words and pictures. Some people may still want help to read it.



Words that are in **bold** are important in the booklet.



Sometimes if a bold word is hard to understand, we will explain what it means.



Blue and underlined words are links you can click to go to websites and emails.

What is in this booklet

About this booklet	4
Who wrote the plan	5
Writing the plan	6
What people told us.....	7
Over to you!	22

This Easy Read booklet was produced by easy-read-online.co.uk
The booklet includes images licensed from Photosymbols & Shutterstock.

About this booklet

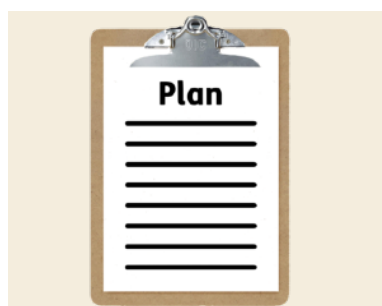


This information is from the Royal Borough of Greenwich.



We want people with **SEND** to live healthy and happy lives.

SEND stands for **S**pecial **E**ducational **N**eeds and **D**isabilities.



We have written a plan for SEND services in the Royal Borough of Greenwich.



This is a plan for how we will support children and young people with SEND.

Who wrote the plan

Lots of different people worked together to write the plan, including:



- Children and young people.



- Parents and carers.



- Royal Borough of Greenwich Council and all of the other people who support you.

Writing the plan



We asked many different people what they thought should be in the plan.



We listened to what they said about their lives, and their hopes for the future.



They put their ideas into artwork, which we have used in the plan.

What people told us



People told us there are 5 goals we need to focus on.



We will explain how we will make these goals happen.

Goal 1

Goal 1 is to make sure children with SEND:



- Feel like they are part of their local community.



- Can go to fun activities like everyone else.

For goal 1 we will:



- Tell you about activities that you might like at your annual review.



- Show you and your parent or carer how to search the Local Offer.



- Make sure the activities meet your needs and interests.



- Offer more activities.

We will know we are getting goal 1. right when:



- We are offering activities you are interested in.



- We talk about the activities in your Annual Review.



- You and your parent or carer know how to search the Local Offer for things to do. You can find the link to the local offer here:

[https://
greenwichcommunitydirectory.org.u
k/kb5/greenwich/directory/
localoffer.page?localofferchannel=0](https://greenwichcommunitydirectory.org.uk/kb5/greenwich/directory/localoffer.page?localofferchannel=0)

Goal 2

Goal 2 is to make sure schools and nurseries:



- Give better support to children with SEND.

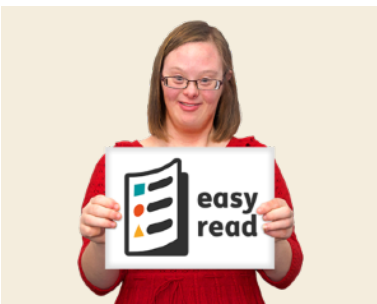


- Have enough places so children with SEND can go to the right school for them.

For goal 2 we will:



- Make sure that all paperwork is up to date.



- Use documents that are easy for you to read.

For goal 2 we will also:



- Help schools learn the best ways to support you.

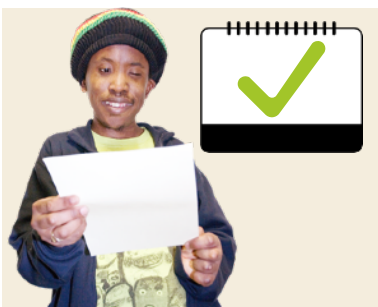


- Make sure money is spent on schools in the right way.



- Open new special schools or colleges so that you can stay in your local area.

We will know we are getting goal 2 right when:



- All paperwork is up to date, and you tell us you understand it.



- Children, their parents or carers, schools, professionals and SEND services can share information and work together better.

We will also know we are getting goal 2 right when:



- Children can go to a school close to where they live.



- You tell us that schools are good at including you.



- School staff are good at their jobs and want to stay in Greenwich.



- Money for children and young people with SEND is spent fairly.

Goal 3

Goal 3 is to make sure that children and young people with SEND can be:



- **Independent.**

Independent means being able to do things on your own without help.



- Ready for work or college when they leave school.

For goal 3 we will:



- Make it easier for young people to become adults and do great things.



- Support children who have emotional needs, their families, and schools better.



For goal 3 we will also:

- Help young people with SEND to have jobs where they are supported.



- Help young people with SEND to be more independent, and can take part in local activities.



- Open a Learning Centre for 19 to 25 year olds with learning or medical needs.



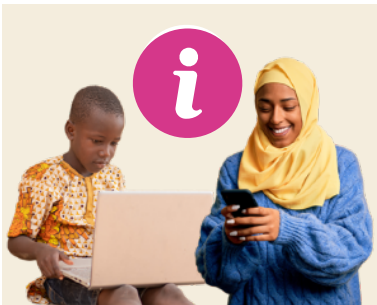
- Give more **travel training**.

Travel training teaches children and young people with SEND how to travel independently.

We will know we are getting goal 3 right when:



- There are more jobs for young people with SEND.



- Families and children can easily find information.



- The Learning Centre is open.



- More children with SEND are travelling independently.



Goal 4

Goal 4 is to make children as safe and healthy as they can be.

For goal 4 we will:



- Have a good understanding of all your medical needs.



- Have better support services for **mental health** needs.

Mental health is the way you think, feel and behave. Having good mental health means being able to cope with your emotions.



- Support young children and babies with SEND better.



- Update information on the Local Offer, which will include short videos. The link to the Local Offer is: <https://greenwichcommunitydirectory.org.uk/kb5/greenwich/directory/localoffer.page?localofferchannel=0>

For goal 4 we will also:



- Look at new ways to help children with medical needs who are not in school all the time.



- Stop people having to wait so long to be **diagnosed**.

Diagnosed is when a health professional tells you information about your health, like telling you you have a health condition.



- Make it easier for young people to become adults.



For goal 4 we will also:

- Offer more health checks to women who are pregnant.

We will know we are getting goal 4 right when:



- Health checks happen on time.



- Children with medical needs are supported better.



- Children and young people are told of their diagnosis more quickly.

We will also know we are getting goal 4 right when:



- You can get health information in Easy Read.



- Pregnant women have more health checks and better care.



- Schools support you better.



- You are supported by staff who understand your needs better.



- Your Education, Health and Care Plan is up to date.

Goal 5

Goal 5 is to help family and friends of children with SEND understand their needs and support them.



For goal 5 we will:



- Give more training to schools.



- Give better support to children who find it hard to go to school.



- Work together to support children and their families.

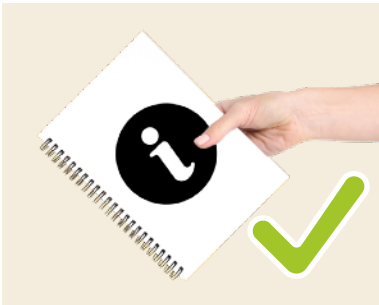


- Make information easier to find.

We will know we are getting goal 5 right when:



- Staff for health and education always work together.



- Everyone can find the information that they need.



- We understand the needs of children who are finding it hard to go to school.



- Staff have better training.



- Children who are too young to go to school have the right services to help them.

Over to you!



We would love to hear from you!



Do you have any questions about the plan?



Do you think we have missed something?



Please tell us what you think and ask your questions by sending an email to:

Youth-Voice@RoyalGreenwich.gov.uk



If you would like to read the full SEND strategy document, you can find it here:

[Special Educational Needs and Disabilities Inclusion Strategy](#)