

# CHILDREN AND YOUNG PEOPLE'S PLAN

2024 – 2029



# INTRODUCTION

Our children and young people have told us that they want to thrive, and this includes having a happy and fulfilled childhood, enjoying school and family life, learning, belonging, growing and achieving so that they enter adulthood able to reach their highest potential. They want to be empowered to work with us to create a future we can all look forward to.

Bringing together partners from across the borough and driven by the voices of our children and young people, this five-year plan, sets out our commitments to ensure all children to have a childhood like this.



*Listen to our voices, empower us, and let's create a future we can all look forward to.*



Greenwich Young  
People's Council



# BACKGROUND

We want to make sure children; young people and their families are at the heart of everything we do in the Royal Borough of Greenwich. The Children and Young People Plan (CYPP) sets out our partnership vision and priorities for the next five years.

This plan has been developed in partnership with children, young people, parents, carers and those who work to support children and young people across the borough.

Delivery of the plan is overseen by the Children and Young People's Partnership Board, with membership from a wide range of organisations that are committed to delivering our vision for children and young people. The board works alongside the Greenwich Young People's Council who will oversee delivery of the plan and provide constructive feedback.

This plan sits alongside other key strategies and aligns with the 'Our Greenwich' corporate plan and other partnership plans, particularly the Health and Wellbeing Strategy.



*Education and opportunities are crucial for children because they lay the groundwork for their future success and wellbeing.*



Young Person at Young Greenwich Youth Hub



# GREENWICH IS A GREAT PLACE TO GROW UP

The Royal Borough of Greenwich is one of the largest of the 33 London boroughs, covering an area of 4,733 hectares, including 13 kilometres of the River Thames. The borough has a rich maritime and military history, and is home to **many different cultures and ethnicities**.



*We chose family friends and relationships because it shapes you as a person and could also affect your wellbeing.*



Year 7 Students

**65,800**

0- to 17-year-olds in the Royal Borough (GLA 2021-based BPO projections)

Across the borough, it is estimated that **38% of households have an income under £25k** (a common measure of relative poverty). One in four children in parts of Woolwich live in poverty, compared to one in ten in parts of Eltham.

**Over 190**

languages spoken by at least one pupil in Greenwich schools

**55** parks and open spaces

**71%**

of Greenwich pupils from Black and Global Majority backgrounds

The borough has a population of **298,000** as of 2023, with approximately 65,800 (22%) people aged under 18.

# GREENWICH HEADLINES



As of March 2024, 94% of Royal Greenwich schools were judged to be good or outstanding compared to the England average of 90%.



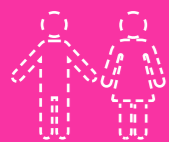
Royal Greenwich children get the very best start to their education with 70% achieving a good level of educational development in 2023 compared to the England average of 67%.



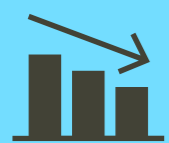
**Summer 2023 results**  
The proportion of Royal Greenwich pupils achieving the expected standard in KS2 reading, writing and mathematics combined (67%) was in the top 10 in England; pupils were also in the top 10 for those achieving the higher standard (12%).



**Summer 2023 results**  
48.4% of Royal Greenwich pupils achieved a strong pass (grade 5 to 9) in English and maths at Key Stage 4, compared with the England average of 45.5%.



Absence and persistent absence in Royal Greenwich Primary and Secondary schools remains below the England average.



The proportion of 16-17 year olds in Royal Greenwich that are not in education, employment or training (EET) continue to compare well against England averages – 3.6% as at end of 2023-24 reporting year.



Re-offending rates are lower for Royal Greenwich young people (26.1% compared to England average of 34.3%).

# WHO WE HAVE SPOKEN WITH

In developing this plan, our aim was to make sure the development of the priorities within plan was driven by our discussions with children and young people. We asked children and young people what was important to them.

The consultation process included face-to-face conversations and discussions with children and young people from reception to year 13 students, and depending on their age they completed interactive surveys to gather collective ideas:



444 children and young people in person discussions



Discussions with 63 parents



Surveys with over 400 children and young people



33 sessions in schools



Discussions with parents at various forums including SEND parent champions, Children's Centres, parents who are Care Leavers, Foster Carer forums, the youth justice peer support network and young advisors



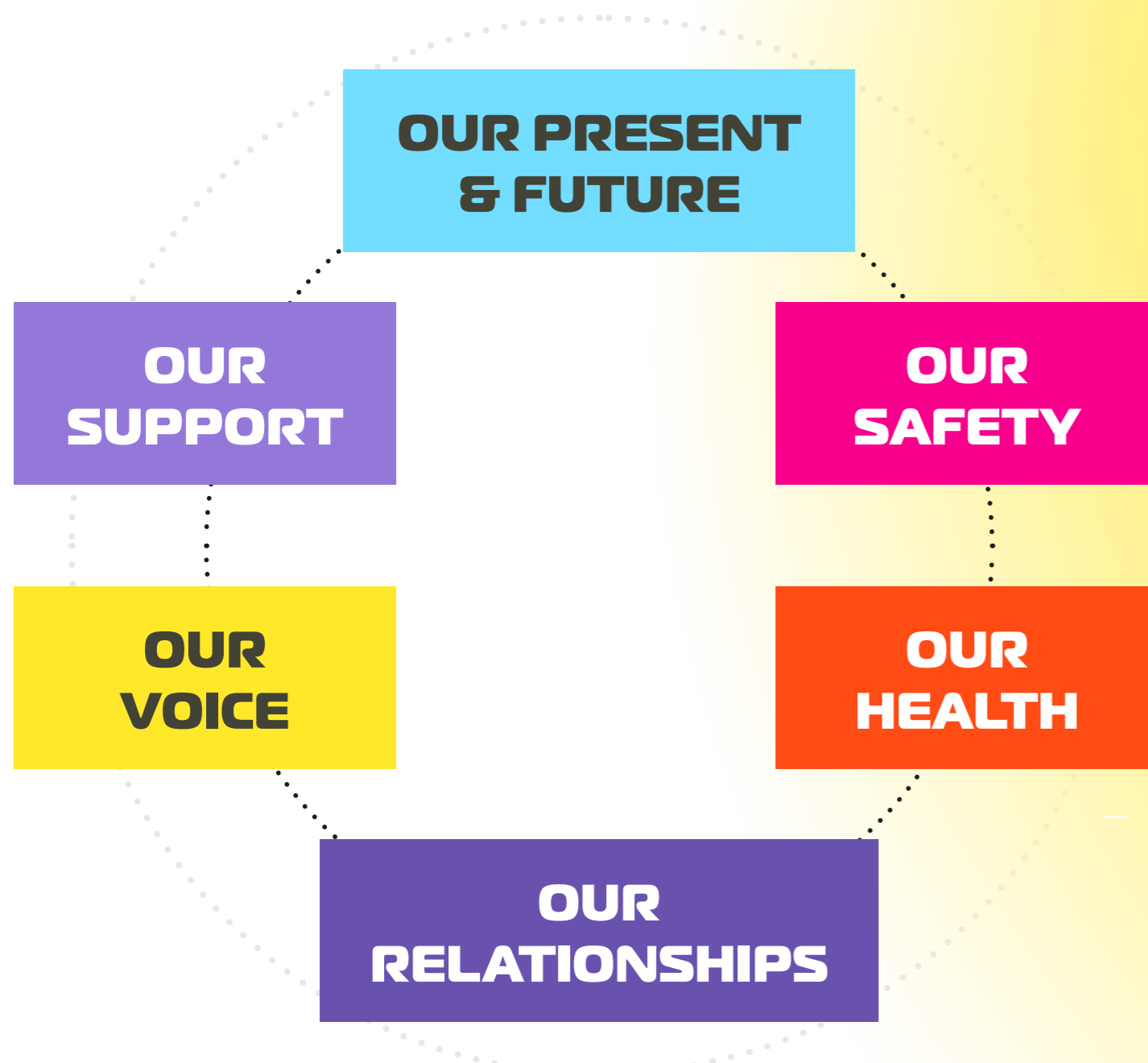
Discussions with young people in their groups including,

- Youth Justice Service
- Greenwich Young People's Council
- Children in our Care Council
- Young Commissioners Group
- Young Greenwich Youth Hubs
  - Funwork Club



# OUR VISION

Greenwich Young People's Council (GYPC) have worked with us to identify the following areas of focus and vision statement for the Children and Young People Strategy 2024-2029:



We, the children and young people of Greenwich, envision a future where we have the power to shape our lives.

We want a community and young people that are confidently **POISED** for action and collaboration:

**Positive** and Hopeful

**Supportive** of our needs,

**Passionate** about our potential,

**Safe** for all,

**Open** in communication,

**Equal** in opportunities,

**Inclusive** of everyone,

**Diverse** and celebrated,

**Listen to our voices, empower us, and let's create a future we can all look forward to.**



# OUR COMMITMENTS 2024-2029

Based on our discussions we have identified a number of commitments. These will act as a framework for the delivery of our partnership activity with children and young people over the course of this strategy.



## OUR PRESENT & FUTURE

*We want to thrive in Greenwich, to know what opportunities and to be supported in preparing for the future*

- Improved awareness of opportunities for children and young people
- Increase work experience and employment opportunities.
- Improved support in education settings.

## OUR SAFETY

*We want to feel safe at home, in the community and online, with support to build resilience*

- Improved safety within the borough.
- Support to keep themselves safe online.

## OUR HEALTH

*We want to be supported to be healthy, this includes understanding how to help ourselves and where more support is needed, we want choices that we can access easily*

- Improved awareness and access to emotional mental health and well-being support for Children, Young People and their parents/ carers.
- Increased awareness of activities for children and young people across the borough.
- A cleaner borough.

## OUR RELATIONSHIPS

*We know our family and networks are important and we want support to maintain positive relationships. We want support for our families who are struggling with the stress of issues such as the cost-of-living crisis*

- Improved support for families and friends to be resilient.
- Support parents to strengthen children's social, emotional and mental health needs.
- Support to maintain positive personal relationships.

## OUR VOICE

*We want to be heard, influence change and decision-making that has an impact on our lives.*

- To have opportunities to influence decision-making at all levels.
- To improve communication so that all children and young people are aware of the CYPP and the opportunities, activities and support in Greenwich.

## OUR SUPPORT

*We want to know what support is available and if we are struggling, how to access it and that it is accessible when we need it.*

- To be able to access support, from the right person, at the right time and in the right amount.
- Support for children and young people with additional support needs.
- Support for families to cope with the cost-of-living crisis.

# CHILDREN AND YOUNG PEOPLE PRIORITIES

Based on discussions with children and young people, GYPC have identified their priorities.

## Theme GYPC Priorities 2024/2025

### OUR PRESENT & FUTURE

- Increasing work experience opportunities for children and wider offers.
- Improving career advice and offering career days at schools.

### OUR SAFETY

- Parking and Speed Limits near schools better monitored and fines should be issued.
- Increase training in online safety resilience to CYP and parents.
- Cleaner Greenwich – addressing cigarette butts and dog fouling, monitoring and fines being issued.

### OUR HEALTH

- Understanding the impact of trauma, and difficult life experiences including discrimination.
- Improved mental health/counselling capacity and services in school.
- Increased knowledge of support available.

### OUR RELATIONSHIPS

- Tackling racism and misogyny.
- Improved bullying mediation including restorative justice.

### OUR VOICE

- Continue the work of GYPC including scrutinising delivery of the plan and holding the board to account.

### OUR SUPPORT

- Advising young adults of access to benefits to reduce pressure and stress on families.
- Increasing donations and assisting families in need i. e. school uniforms.
- Improve life skills training and managing money within PSHE.





# DELIVERING OUR COMMITMENTS

The Children and Young People Partnership Board is responsible for delivering against our commitments.

The Board is co-chaired by the Leader of the Council and a representative from the GYPC.

Agreed actions will incorporate areas of focus identified by the Greenwich Young People's Council, who will work alongside the Children and Young People's Partnership Board to oversee and scrutinise the delivery of this action plan and progress against the priorities.

“

*I want to change the world – make it magical.*

”

Year 12 Student



