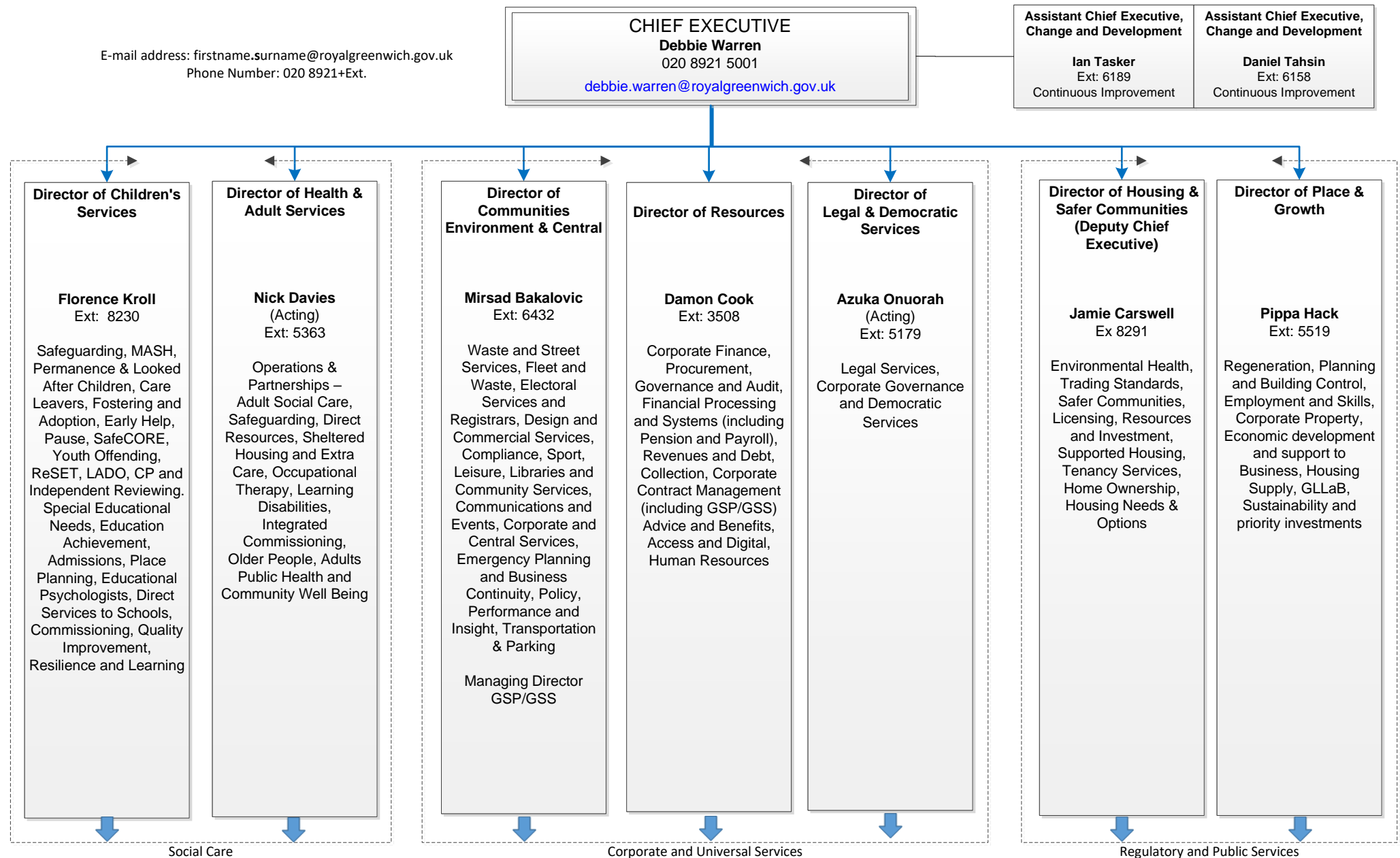


E-mail address: [firstname.surname@royalgreenwich.gov.uk](mailto:firstname.surname@royalgreenwich.gov.uk)  
Phone Number: 020 8921+Ext.



Social Care

Corporate and Universal Services

Regulatory and Public Services

**DIRECTOR OF CHILDREN'S SERVICES**  
**Florence Kroll**  
 Ext: 8230  
 1<sup>st</sup> Floor, The Woolwich Centre

**Deputy Director Of Children Services**  
**Onder Beter**  
 Ext: 3102  
 Safeguarding, MASH, Permanence & Looked After Children, Care Leavers, Fostering and Adoption, Early Help, Pause, SafeCORE, Youth Offending, ReSET, LADO, CP and Independent Reviewing  
 1<sup>st</sup> Floor, The Woolwich Centre

**Integrated Commissioning Director for Children's Services**  
**David Borland**  
 Ext: 3232  
 Integrated Commissioning  
 1<sup>st</sup> Floor, The Woolwich Centre

**Assistant Director Quality Improvement**  
**Karl Mittelstadt**  
 Ext: 2910  
 Quality Improvement, Resilience and Learning  
 1<sup>st</sup> Floor, The Woolwich Centre

**Senior Assistant Director Inclusion, Learning & Achievement**  
**Vicki Cuff**  
 Ext: 8434  
 Special Educational Needs, Education Achievement, Admissions, Place Planning, Educational Psychologists, Direct Services to Schools  
 1<sup>st</sup> Floor, The Woolwich Centre

**Strategic Lead Safeguarding**  
**Karen Scholtz**  
 Ext: 3179  
 Safeguarding Service  
 1<sup>st</sup> Floor, The Woolwich Centre

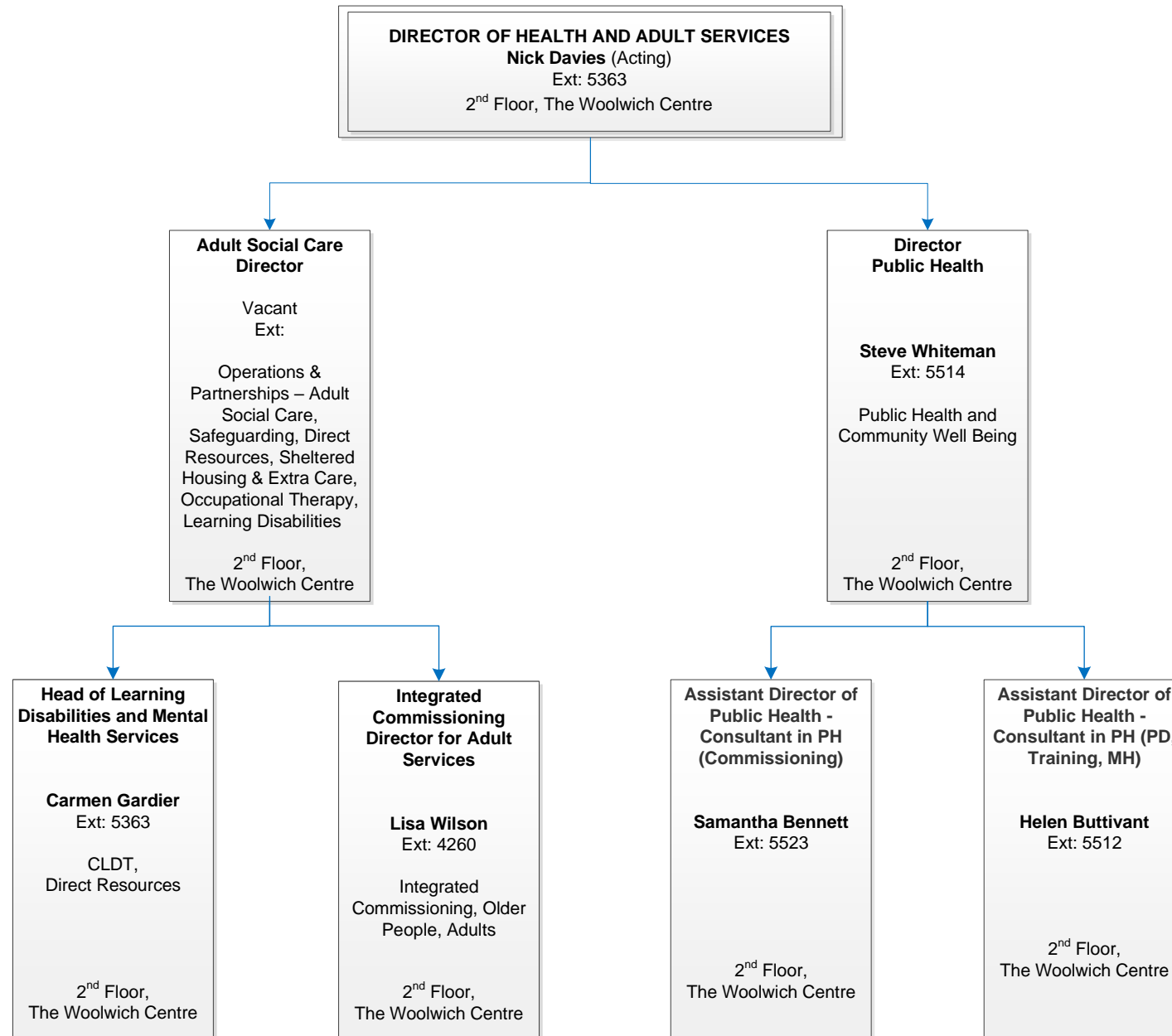
**Strategic Lead Children in our Care and Care Leavers**  
**Ishara Tewary**  
 Ext: 2761  
 Permanence Service  
 1<sup>st</sup> Floor, The Woolwich Centre

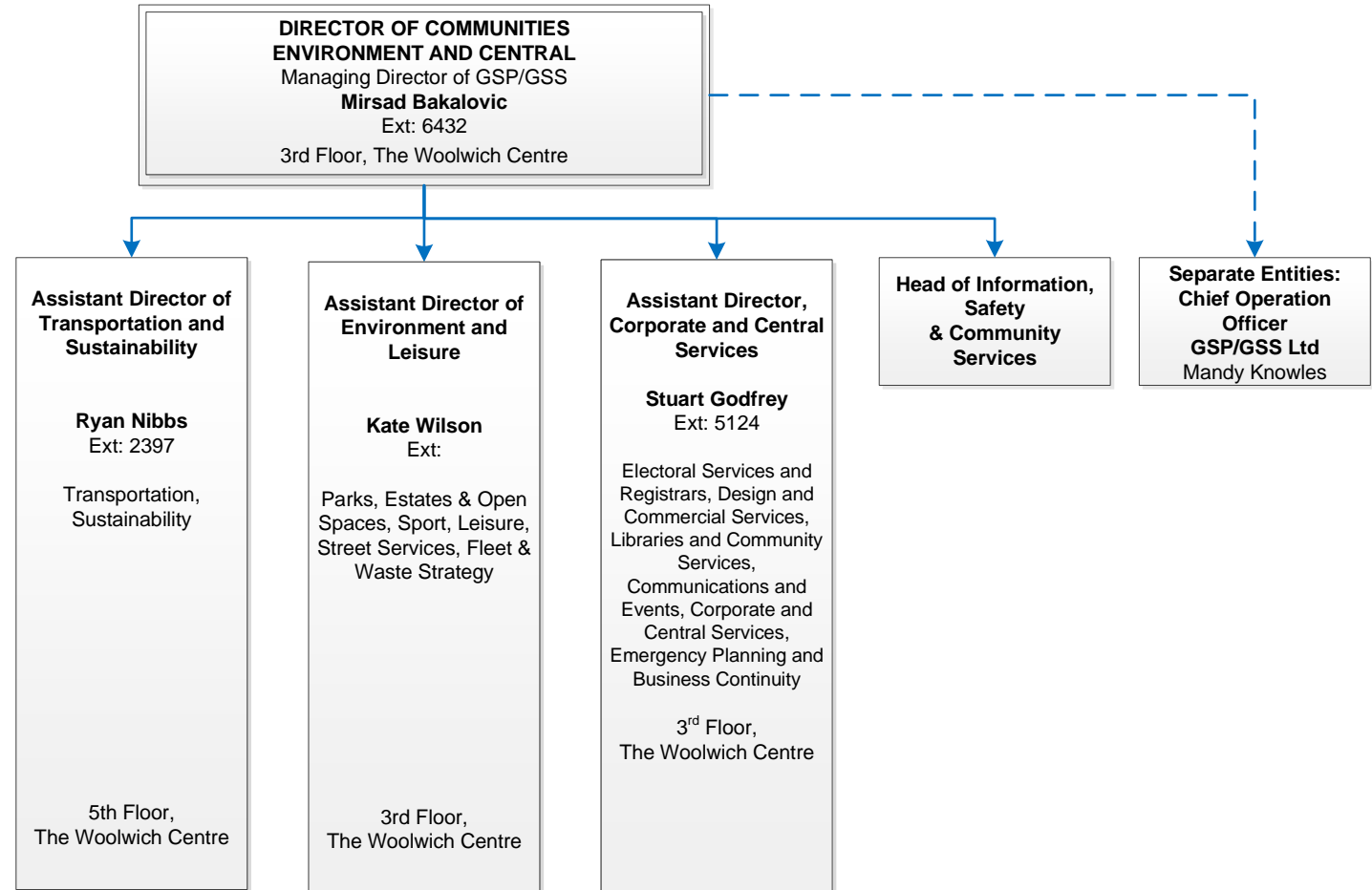
**Strategic Lead Practice Improvement and Development**  
**Teresa Doherty**  
 Ext: 6240  
 Safeguarding Service  
 1<sup>st</sup> Floor, The Woolwich Centre

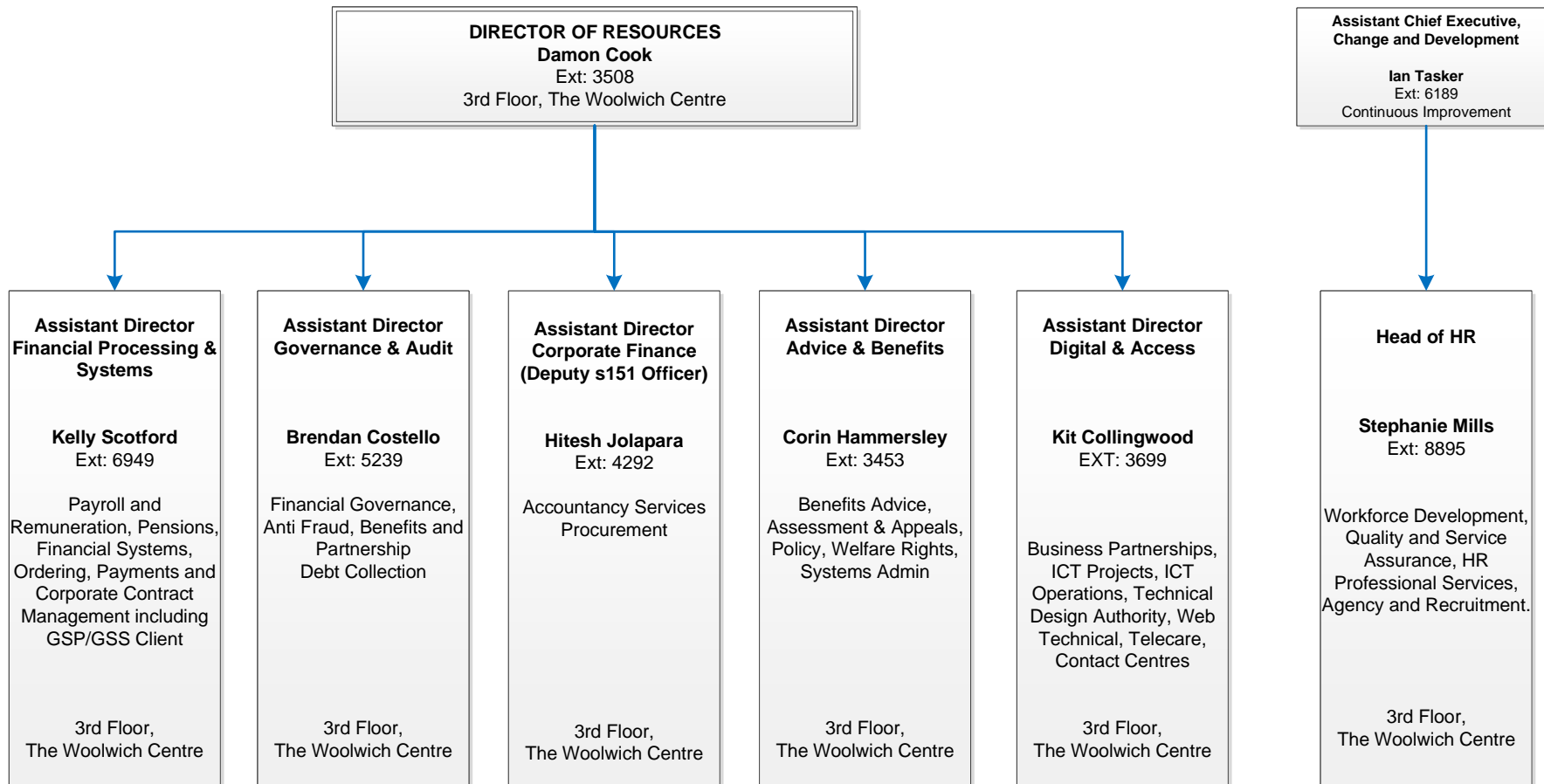
**Strategic Lead for Adolescent Safeguarding and Family Support**  
**Shaba Dachi**  
 Ext: 3099  
 Safeguarding Service  
 1<sup>st</sup> Floor, The Woolwich Centre

**Strategic Lead for Inclusion and Place Planning**  
**Jane Lawley**  
 Ext: 8030  
 Royal Greenwich Virtual School, Place Planning and Development  
 1<sup>st</sup> Floor, The Woolwich Centre

**Strategic Lead for SEND and Vulnerable Learners**  
**Martyn Patterson**  
 Ext: 5193  
 SEND, Schools Apprenticeships, Careers  
 1<sup>st</sup> Floor, The Woolwich Centre







**DIRECTOR OF LEGAL AND  
DEMOCRATIC SERVICES**  
**Azuka Onuorah (Acting)**  
Ext: 5179  
4th Floor, The Woolwich Centre



**Head of  
Legal Services**

**Vacant**  
Ext:

Legal Services,  
Corporate Governance  
and Democratic Services

4th Floor,  
The Woolwich Centre

