

Leaving Care Team

NEWSLETTER



HAPPY NEW YEAR!

Welcome to the very first edition of the Leaving Care Team's Newsletter!

We've created this space for care leavers to stay in touch, find support, and build community.

From mental health resources to education and employment access, we've got you covered with all the services available in your borough. Join us for relevant stories, tips, and important updates tailored specifically to your journey.

Our goal is to make this newsletter a highlight in your inbox that you look forward to.

Thanks for being a part of our first edition. We're excited to grow and learn together with you in future editions. The newsletter comes out quarterly, so keep an eye out for our next issue in the Spring.

Happy reading!

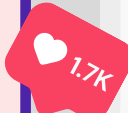
LC Editorial Team

"COMPETITION TIME"

AS YOU'VE PROBABLY NOTICED, THE CURRENT TITLE OF THE NEWSLETTER IS BORING. SO, WE ARE CALLING ON **YOU** TO SHOWCASE YOUR CREATIVITY AND COME UP WITH A NEW CATCHY TITLE AND LOGO FOR THE NEWSLETTER.

Of course, a prize awaits! Send your entries and suggestions to your PA for a chance to win. The winner will be announced in the next edition.

Best of luck!




DON'T MISS OUT

NEW



1. 

TFL **50%** TRAVEL
CONCESSION FOR CARE
LEAVERS.



GET HALF-PRICE ON BUS AND TRAM RIDES!
SAVE SOME CASH WITH THIS AMAZING OPORTUNITY.
PROVIDE YOUR PA WITH CONSENT TO SHARE YOUR
DETAILS WITH TFL.

MENTORING PROJECT

If you feel you would gain from having a mentor in any area, please speak with your PA. We have recently launched a Mentoring Service, and we can't wait to see you thrive!

2. 




3. 

SOFT PLAY FOR PARENTS AND TODDLERS

BRING YOUR LITTLE ONES TO PLAY AT THE FORUM, TRAFALGAR ROAD,
GREENWICH, SE10 9EQ.

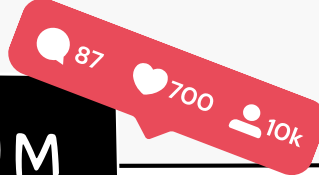
MARK YOUR CALENDARS FOR:

- 
- FEB, 6TH
 - MARCH, 5TH
- FROM 12-2PM

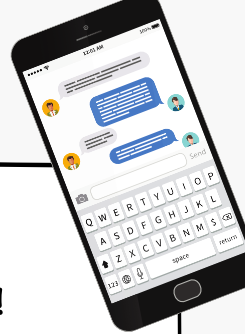
JOIN A SESSION BY CONTACTING YOUR PA!



CARE LEAVERS FORUM



4.



JOIN THE CONVERSATION!
OUR FORUM FOR CARE LEAVERS IS
WAITING FOR **YOU!** BUILD
RELATIONSHIPS, SHARE STORIES AND
WORK TOGETHER TO SHAPE THE
FUTURE OF THE LEAVING CARE
COMMUNITY. GET READY TO CONNECT
EVERY 5 WEEKS EITHER IN PERSON OR
ONLINE. YOUR OPINIONS MATTER.

WANT TO JOIN A FREE COOKERY CLUB?

5.



SPEAK TO YOUR PA ABOUT HOW YOU CAN GET INVOLVED
WITH FREE COOKERY SESSIONS NEAR YOU.



CARE LEAVERS JOB CLUB

6.



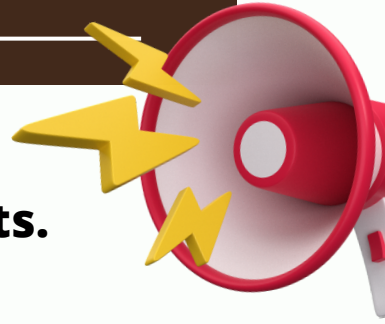
THE JOB CLUB HAS RELAUNCHED!

TALK TO YOUR PA IF YOU'D LIKE TO JOIN FOR: 1-1 OR GROUP
SESSIONS ON EMPLOYABILITY SUPPORT, HELP WITH YOUR UC
CLAIMS, MONTHLY PROGRESS REPORTS, AND MORE.

CHECK THIS OUT

OMG!

We strive to provide you with valuable resources that cater to your needs and interests.



Scan the QR codes below to explore the latest projects, resources and services of our Greenwich Community, all centered around supporting **you!**

For additional assistance, don't hesitate to reach out to your PA.

Stay connected with us!

£250 COST OF LIVING PAYMENT

MAKE SURE YOUR PA HAS YOUR UP TO DATE NUMBER AND EMAIL, AS THE GOVERNMENT WILL BE ISSUING A £250 COST OF LIVING PAYMENT BEFORE THE END OF MARCH 2024.

THE MONEY IS COLLECTED VIA A CODE IN A TEXT OR EMAIL THAT YOU WILL RECEIVE WHICH YOU WILL NEED TO TAKE TO THE POST OFFICE.

Don't miss out on the payment!

OUR LOCAL OFFER TO CARE LEAVERS

Scan to see what Royal Greenwich has in store
for you as a Care Leaver!



New updated Local Offer coming soon!

GREENWICH SEXUAL HEALTH

If you seek support or advice around your
sexual health, Greenwich Sexual Health (GSH)
can help.

Scan the QR code to take you to their site!



GREENWICH DOMESTIC VIOLENCE & ABUSE SERVICES

Support for those affected by abuse.

Scan if you or someone you know is
dealing with abuse and needs guidance.

Additionally, speak with your PA.

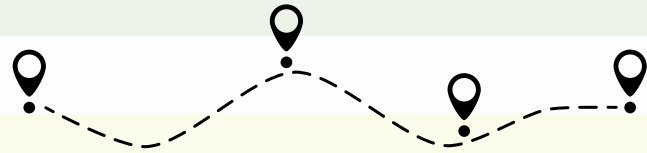


LIVE WELL GREENWICH

Get more support if you need it.



If you are struggling to cope with difficult feelings, practical issues and daily life in general. Scan and find a list of resources and services provided by Live Well Greenwich.



FOOD BANK LOCATIONS

Contact your PA to help you access your nearest food bank, if you need to.

The Royal Borough of Greenwich aims to support all of their residents who may need extra assistance with daily life.



SHOUT-OUT TO...

PAST

And last but not least, let's give a big shout-out to our Leaving Care Team for organizing the successful Care Leavers Week Event last October.

Here are some photos of the activities that took place:

23/10 - CORPORATE PARENTING WEEK



24/10 SOFT PLAY



25/10 SPORTS DAY



26/10 GO-KARTING



See you soon!

