

# Littering

Litter is stuff that ends up on the roads, streets and parks or in lakes and seas.

It could be glass bottles, plastic bags, tins, cigarette butts or sweet wrappers.

Both animals and people can injure themselves because of litter.

## Did You Know?

**30 million tonnes of litter are dropped each year in the UK.**

**It is thought that 7 out of 10 pieces of litter on our streets is food-related**



**95% of our country's streets are stained with chewing gum**

New laws mean litter droppers can be fined at least £75 for dropping anything in the street, including chewing gum!

**Litter can hurt your pets and wildlife**

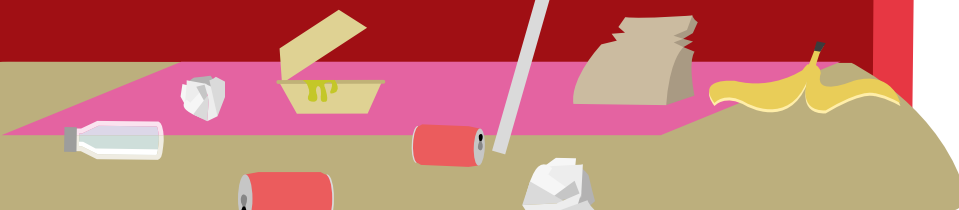
Over 70,000 pets and wild animals are hurt in Britain every year because of litter.

**£342 million**

a year is spent on litter clearing and street cleaning in England. Think about all the good things that could be done with all this money!

**Beach visitors are huge litter droppers!**

**They drop 37% more fast food wrappers and 17% more plastic bags than anyone else!**



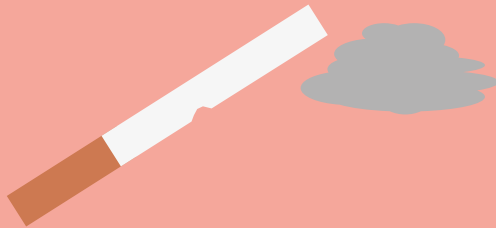
# Top Tips

## 1. Keep a bag for litter in your car

Do not throw litter out of the window. It is a crime to do this. Put it in the bag. This will keep both the streets and the car clean!



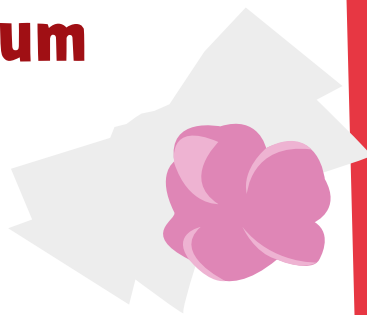
## 3.



If any adult in your house is a smoker, encourage them to use a pocket ashtray and be responsible for their cigarette litter. Or better still, ask them to stop smoking!

## 4. Don't drop your gum

Keep a small piece of paper in your pocket. When you've finished with your gum, wrap it in the piece of paper and place it in a litter bin.



## 2. Keep a lid on your waste!

Make sure your rubbish and recycling bins have the lids closed.

Newspapers, cans and other lightweight waste materials can be easily picked up by the wind and scattered far away.



## 5.

## Tie your bags

If you put waste or recycling out in sacks, remind your parents how important it is to secure all bags so that litter is not scattered away.



# Activities

## At Home

### **Ask your parents to organise a litter picking exercise in your local area.**

Preferably with your neighbours. If you manage to get a team together, contact the Council and we will be happy to give you litter pickers, sacks and gloves for your exercise. Contact: **020 8921 4661**.

Don't forget to separate recycling from non-recycling waste and use a clear bag for the recycling. Can you record which of the items you picked up could be recycled?

### **Think and research...**

In what ways can litter be harmful to humans and animals?



### **Think about what you could do if you see someone littering.**

Discuss your ideas with your parents!

### **Write a story, 'The journey of a...' in which a sweet wrapper or crisp packet is thrown on the ground by someone.**

Where will the item end up? Could an animal think it is food? Read your story to your friends and parents and tell them how important it is not to litter.

## At School

### **Ask your teachers to organise a litter picking exercise in the area around your school.**

We will be happy to provide sacks, gloves and litter pickers for you.

Don't forget to use a clear bag as well as a black one to separate the recycling from non-recycling waste.

As part of a school challenge, you can count the number of bags collected and estimate the percentage of recycling/non-recycling waste.

### **Organise a bin check in your school.**

Have you got enough bins, especially in areas which have lots of litter e.g. near tuckshops? Are the bins emptied regularly and do they have lids so litter doesn't blow out of them? Do you have separate bins for litter that can be recycled?

### **Write down things you could change to achieve a litter free school and discuss this with your teacher and classmates.**



# Word search

Can you find all the words littered throughout the grid?

## Level 1

**BIN**  
**BAG**  
**CIGARETTE**  
**CLEAN**  
**FOOD**  
**GUM**  
**LITTER**  
**PLASTIC**  
**WIND**  
**WRAPPER**

A	U	E	G	T	B	I	N	W	X	R
U	P	W	T	B	I	M	R	Z	M	S
C	L	Y	H	G	Y	Q	T	K	V	Z
I	A	D	L	I	T	T	E	R	C	N
G	S	J	X	X	H	E	V	F	L	R
A	T	B	B	A	G	D	E	Z	E	H
R	I	N	A	D	P	B	W	P	A	G
E	C	S	O	F	Y	A	P	W	N	B
T	A	O	G	U	M	A	A	I	M	U
T	F	Y	L	G	R	O	L	N	F	L
E	J	L	D	W	R	Y	H	D	U	H

## Level 2

**ANIMAL**  
**BAG**  
**BIN**  
**CLEAN**  
**FINE**  
**FOOD**  
**GUM**  
**HARMFUL**  
**LITTER**  
**PLASTIC**  
**RECYCLING**

**STREET**  
**WIND**  
**WRAPPER**

Z	G	I	G	B	V	K	X	L	X	U	P	O	L	L
T	P	M	N	Z	F	D	U	I	A	D	G	L	Y	I
J	W	I	N	D	T	F	C	T	A	H	B	I	N	M
M	R	J	W	K	M	C	S	T	R	G	Q	X	N	L
B	A	G	Y	R	Y	G	L	E	W	G	A	S	G	F
C	P	L	A	S	T	I	C	R	M	O	F	N	E	H
L	P	H	V	G	U	M	V	P	V	S	O	K	C	H
E	E	G	N	D	L	F	H	F	C	T	O	C	B	S
A	R	I	Y	V	C	A	V	I	P	R	D	I	Y	E
N	Y	V	W	J	B	N	M	N	X	E	V	H	F	C
T	O	N	L	O	U	I	Q	E	Q	E	Y	M	D	U
Y	Z	E	T	X	L	M	T	W	H	T	U	D	X	R
X	O	M	R	G	A	A	G	G	M	G	W	C	I	E
F	R	E	C	Y	C	L	I	N	G	G	Y	O	P	Q
K	Q	W	N	Z	Y	S	C	J	T	G	M	E	A	L